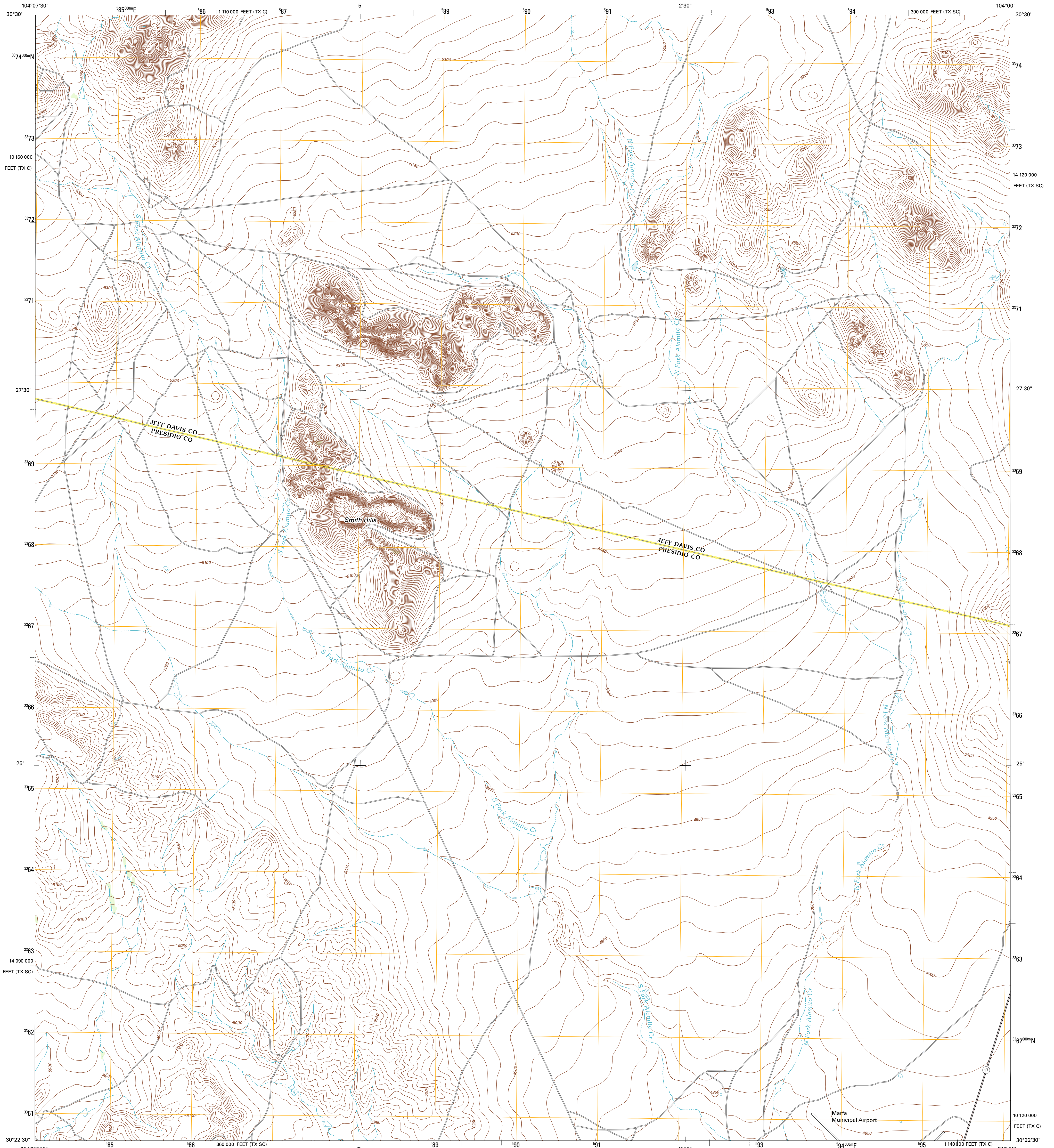




U.S. DEPARTMENT OF THE INTERIOR
U. S. GEOLOGICAL SURVEY

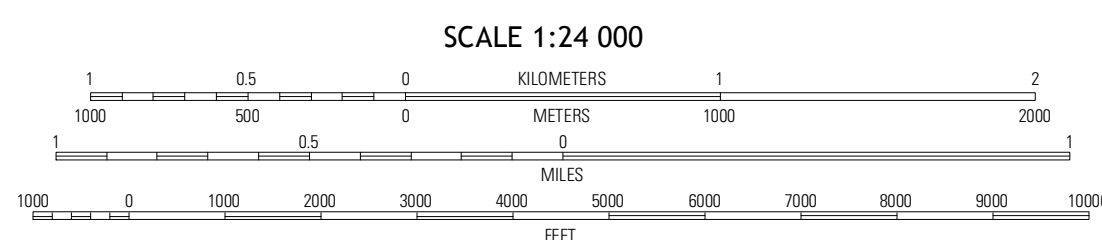
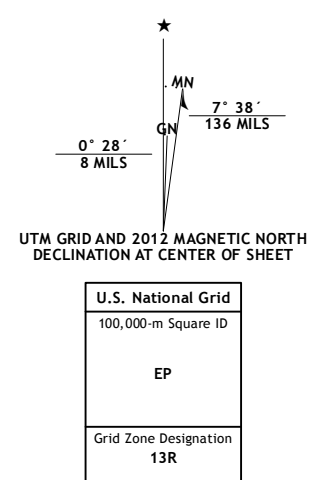


SMITH HILLS QUADRANGLE
TEXAS
7.5-MINUTE SERIES



Produced by the United States Geological Survey
North American Datum of 1983 (NAD83)
World Geodetic System of 1984 (WGS84). Projection and
1 000-meter grid: Universal Transverse Mercator, Zone 13R
10 000-foot ticks: Texas Coordinate System of 1983 (south
central and central zones)

Imagery.....NAIP, August 2010 - September 2010
Roads.....©2006-2012 TomTom
Names.....©2012
Hydrography.....National Hydrography Dataset, 2010
Contours.....National Elevation Dataset, 2005
Boundaries.....Census, IBWC, IBC, USGS, 1972 - 2012



CONTOUR INTERVAL 10 FEET
NORTH AMERICAN VERTICAL DATUM OF 1988
This map was produced to conform with the
National Geospatial Program US Topo Product Standard, 2011.
A metadata file associated with this product is draft version 0.6.7



QUADRANGLE LOCATION

Paradise Mountain	Blue Mountain	Fort Davis
Burro Draw	Smith Hills	Mono Prieto Mountain
Aragon	Marfa	Nopal

ROAD CLASSIFICATION

Interstate Route	State Route
US Route	Local Road
Ramp	4WD

SMITH HILLS, TX
2012

ADJOINING 7.5 QUADRANGLES