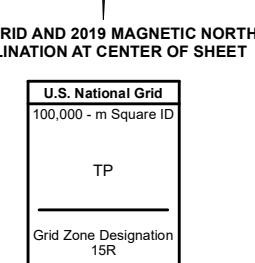
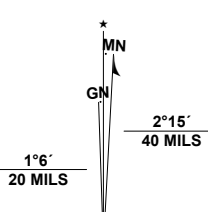


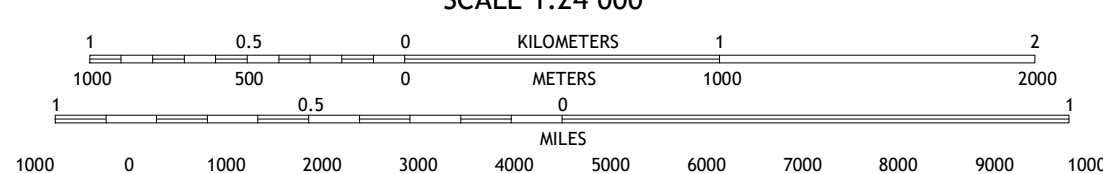
Produced by the United States Geological Survey

North American Datum of 1983 (NAD83) World Geodetic System of 1984 (WGS84) Projection and 1 000-meter grid/Universal Transverse Mercator, Zone 15R This map is not a legal document. Boundaries may be generalized for this map scale. Private lands within government reservations may not be shown. Obtain permission before entering private lands.

Imagery: NAIP, September 2016 - November 2016  
Roads: U.S. Census Bureau, 2015  
Names: GNS, 1979 - 2021  
Hydrography: National Hydrography Dataset, 2003 - 2018  
Contours: National Elevation Dataset, 2010  
Boundaries: Multiple sources; see metadata file 2019 - 2021  
Wetlands: FWS National Wetlands Inventory Not Available



SCALE 1:24 000



CONTOUR INTERVAL 5 FEET NORTH AMERICAN DATUM OF 1988 This map was produced to conform with the National Geospatial Program US Topo Product Standard.



ADJOINING QUADRANGLES

1	2	3
4	5	6
7	8	

- 1 Cut And Shoot
- 2 Fostoria
- 3 Cleveland
- 4 Outlaw Pond
- 5 Plum Grove
- 6 Maedan
- 7 Moonshine Hill
- 8 Huffman

ROAD CLASSIFICATION

Expressway	Local Connector
Secondary Hwy	Local Road
Ramp	4WD
Interstate Route	US Route
	State Route

