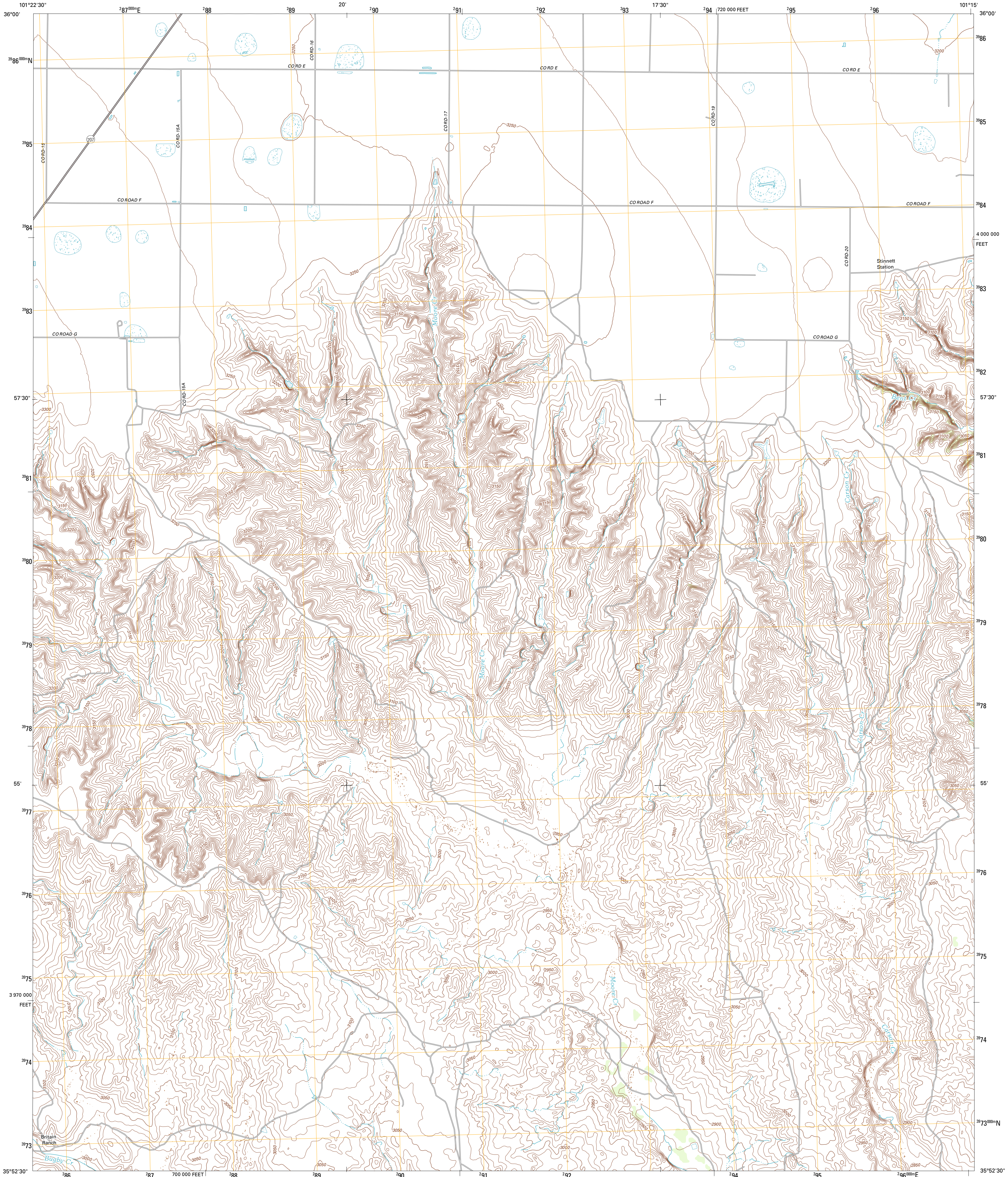




U.S. DEPARTMENT OF THE INTERIOR
U. S. GEOLOGICAL SURVEY

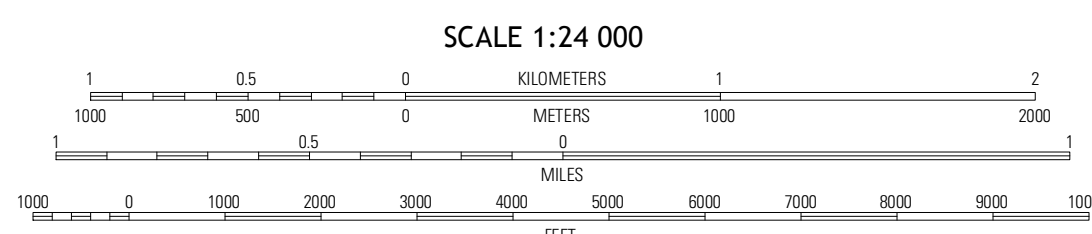
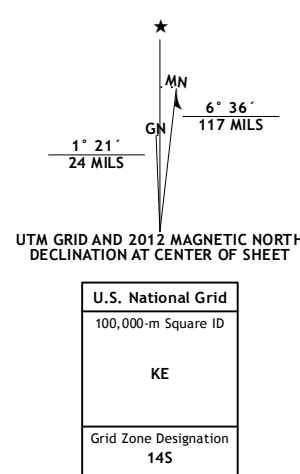


STINNETT STATION QUADRANGLE
TEXAS-HUTCHINSON CO.
7.5-MINUTE SERIES



Produced by the United States Geological Survey
North American Datum of 1983 (NAD83)
World Geodetic System of 1984 (WGS84). Projection and
1 000-meter grid: Universal Transverse Mercator, Zone 14S
10 000-foot ticks: Texas Coordinate System of 1983 (north zone)

Imagery.....NAIP, August 2010
Roads.....©2006-2012 TomTom
Names.....GNS, 2012
Hydrography.....National Hydrography Dataset, 2010
Contours.....National Elevation Dataset, 2002
Boundaries.....Census, IBHC, IBC, USGS, 1972 - 2012

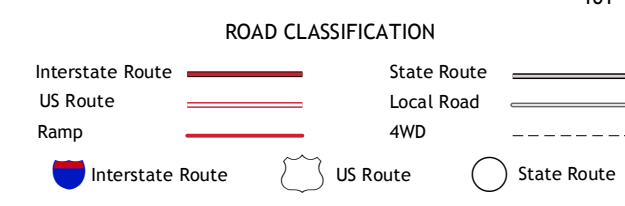


CONTOUR INTERVAL 10 FEET
NORTH AMERICAN VERTICAL DATUM OF 1988
This map was produced to conform with the
National Geospatial Program US Topo Product Standard, 2011.
A metadata file associated with this product is draft version 0.6.7



QUADRANGLE LOCATION

More	More SE	Holt
Pringle	Stinnett Station	Adobe Creek
Stinnett	Plemmons	Adobe Creek SW



STINNETT STATION, TX
2012

ADJOINING 7.5 QUADRANGLES