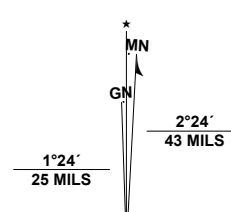


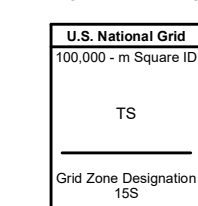
Produced by the United States Geological Survey

North American Datum of 1983 (NAD83)
World Geodetic System of 1984 (WGS84), Projection and
1 000-meter grid/Universal Transverse Mercator, Zone 15S
This map is not a legal document. Boundaries may be
generalized for this map scale. Private lands within government
reservations may not be shown. Obtain permission before
entering private lands.

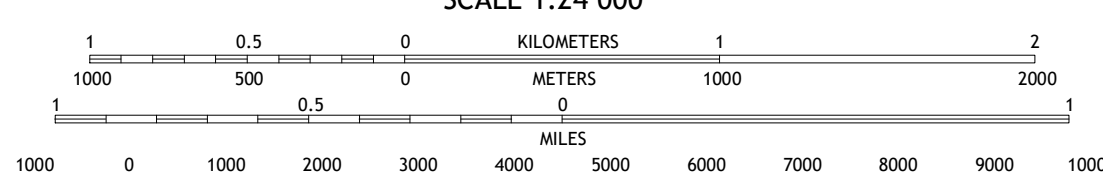
Imagery.....NAIP, September 2016 - November 2016
Roads.....U.S. Census Bureau, 2015 - 2018
Names.....GNIS, 2008 - 2021
Hydrography.....National Hydrography Dataset, 2003 - 2018
Contours.....National Elevation Dataset, 2004
Boundaries.....Multiple sources; see metadata file 2019 - 2021
Wetlands.....FWS National Wetlands Inventory Not Available



UTM GRID AND 2019 MAGNETIC NORTH
DECLINATION AT CENTER OF SHEET



SCALE 1:24 000



CONTOUR INTERVAL 10 FEET
NORTH AMERICAN DATUM OF 1988
This map was produced to conform with the
National Geospatial Program US Topo Product Standard.



QUADRANGLE LOCATION

1	2	3
4	5	6
7	8	

ROAD CLASSIFICATION

	Expressway		Local Connector
	Secondary Hwy		Local Road
	Ramp		4WD
	Interstate Route		US Route
			State Route

SULPHUR SPRINGS, TX

2022



NSA 7 8 4 3 0 0 4 6 3 9 8 4 9 7
NGA REF NO. U.S.G.S. X.2.4.K.4.3.7.0.2