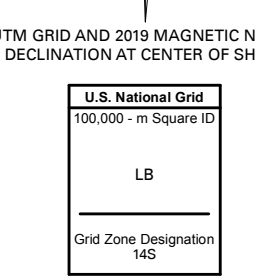
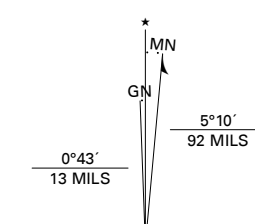


Produced by the United States Geological Survey

North American Datum of 1983 (NAD83)
World Geodetic System of 1984 (WGS84), Projection and
1 000-meter grid; Universal Transverse Mercator, Zone 14S
This map is not a legal document. Boundaries may be
generalized for this map scale. Private lands within government
reservations may not be shown. Obtain permission before
entering private lands.

ImageryNAIP, September 2016 - November 2016
RoadsU.S. Census Bureau, 2015 - 2018
NamesGNIS, 1979 - 1979
HydrographyNational Hydrography Dataset, 2004 - 2018
ContoursNational Elevation Dataset, 2010
BoundariesMultiple sources; see metadata file 2016 - 2017
WetlandsFWS National Wetlands Inventory 1984



CONTOUR INTERVAL 10 FEET
NORTH AMERICAN VERTICAL DATUM OF 1988
This map was produced to conform with the
National Geospatial Program US Topo Product Standard, 2011.
A metadata file associated with this product is draft version 0.6.18



ADJOINING QUADRANGLES

1	2	3
4	5	6
7	8	

1 Seven Diamond L. Canyon
2 Levers Resort
3 Kiowa Peak SW
4 Peacock
5 Aspermont
6 Double Mountains
7 Coon Hollow
8 Aspermont Lake

ROAD CLASSIFICATION

Expressway	Local Connector
Secondary Hwy	Local Road
Ramp	4WD
Interstate Route	US Route
	State Route

