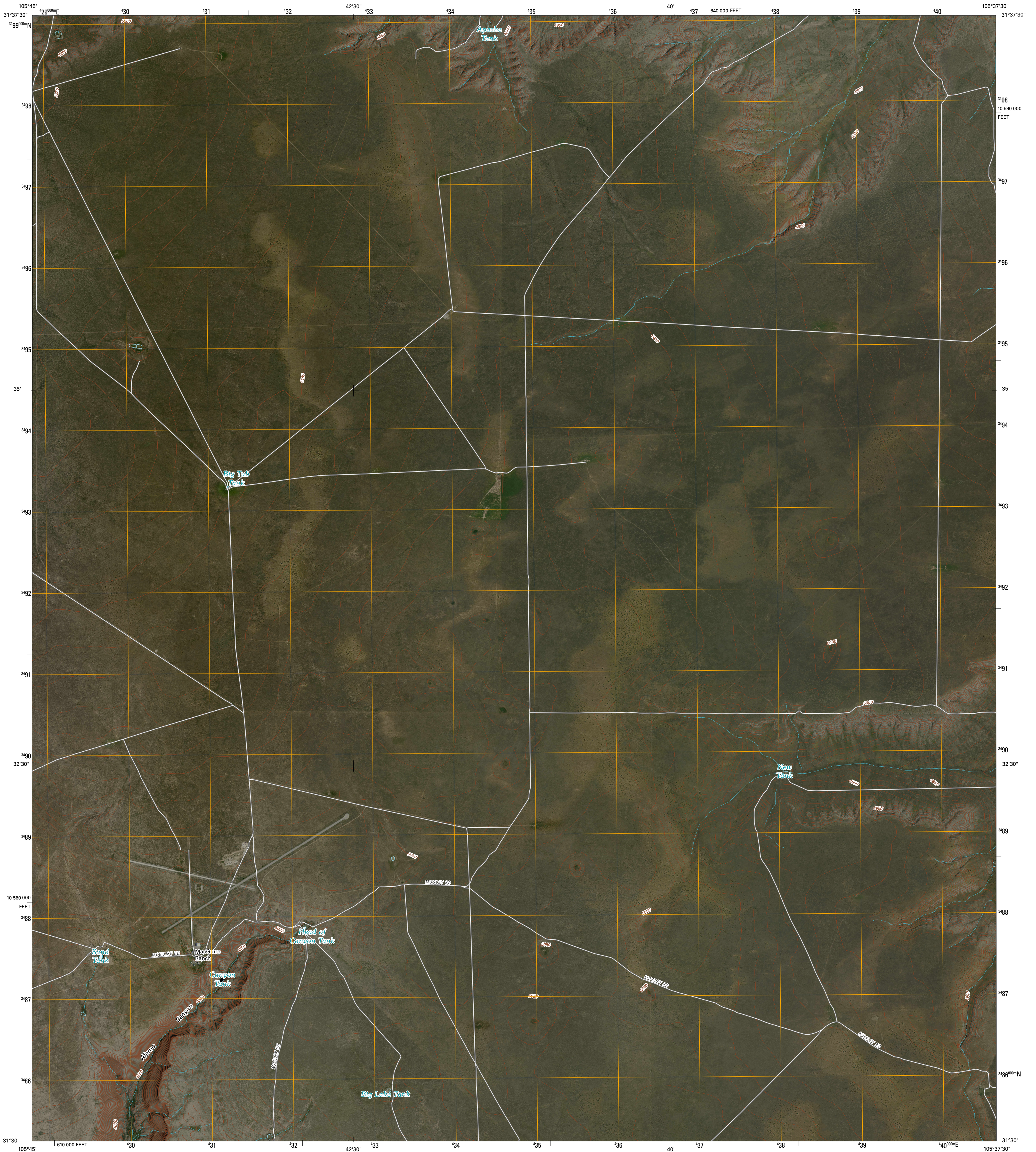




U.S. DEPARTMENT OF THE INTERIOR
U. S. GEOLOGICAL SURVEY

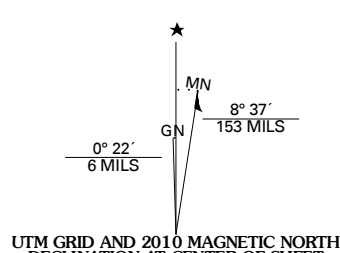


TEPEE BUTTE SW QUADRANGLE
TEXAS
7.5-MINUTE SERIES

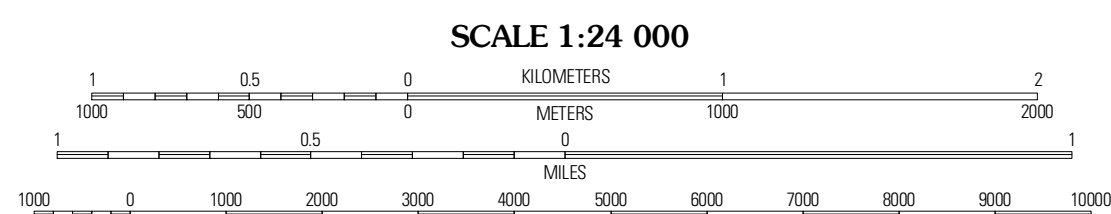


Produced by the United States Geological Survey
North American Datum of 1983 (NAD83)
World Geodetic System of 1984 (WGS84). Projection and
1 000-meter grid; Universal Transverse Mercator, Zone 13R
10 000-foot ticks: Texas Coordinate System of 1983
(central zone)

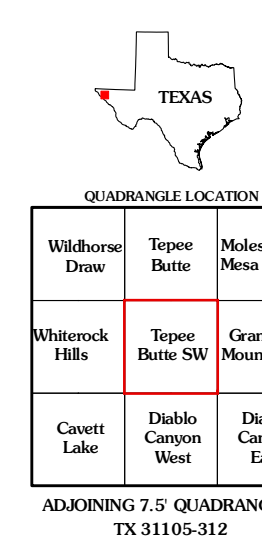
Imagery.....NAP, September 2008
Roads.....US Census Bureau TIGER data
with limited USGS updates, 2008
Names.....GNIS, 2008
Hydrography.....National Hydrography Dataset, 1995
Contours.....National Elevation Dataset, 2005



U.S. National Grid	13R, 0000m Square ID
00	
Grid Zone Designation	13R

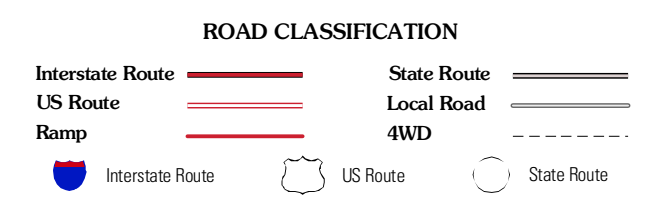


This map was produced to conform with version 0.5.10 of the
draft USGS Standards for 7.5-Minute Quadrangle Maps.
A metadata file associated with this product is also draft version 0.5.10



QUADRANGLE LOCATION		
Wildhorse Dew	Tepee Butte	Molesworth Mesa South
Wildrock Hills	Tepee Butte SW	Granite Mountain
Cassett Lake	Diable Canyon West	Diable Canyon East

ADJOINING 7.5 QUADRANGLES
TX 31105-312



TEPEE BUTTE SW, TX
2010