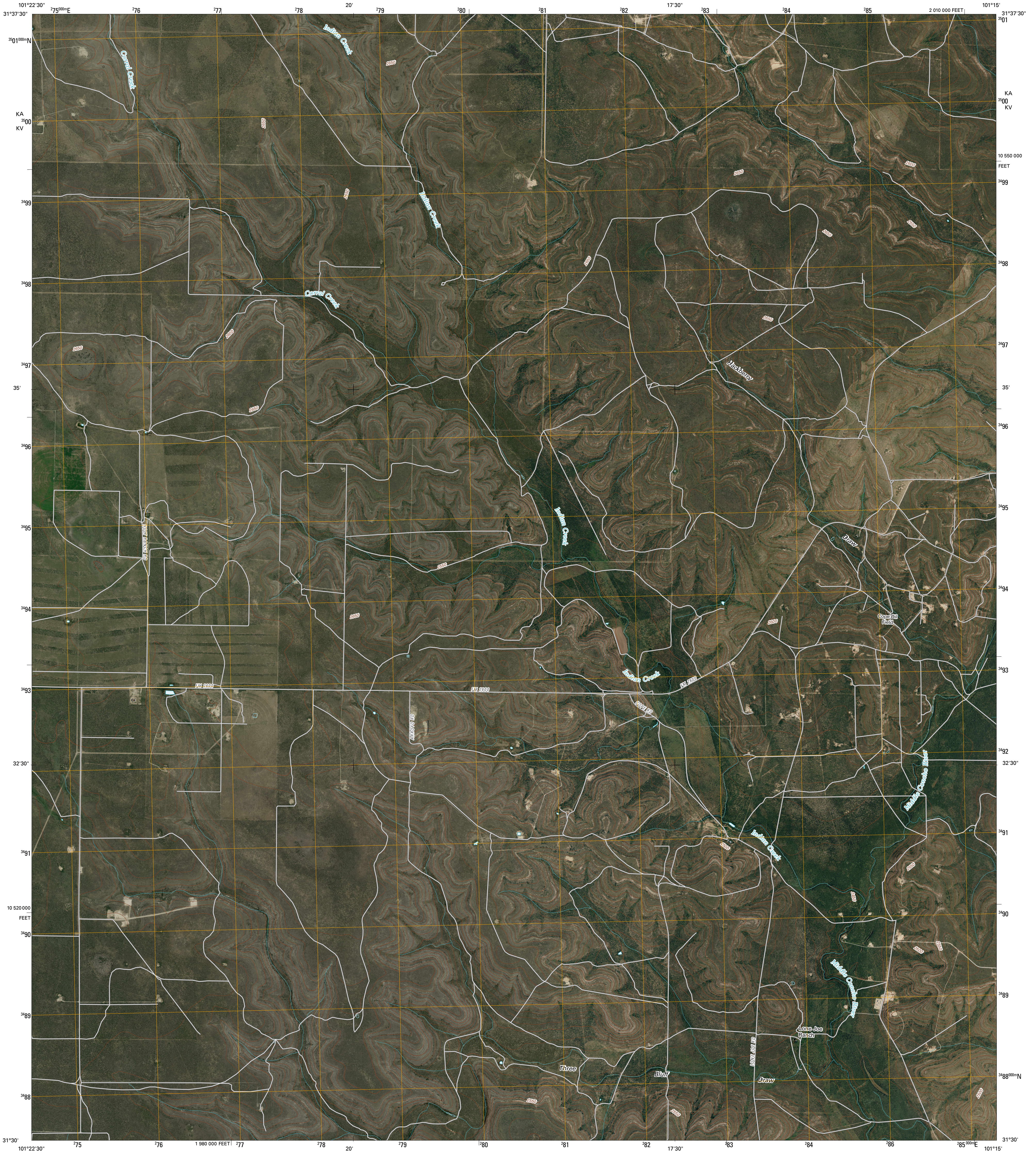




U.S. DEPARTMENT OF THE INTERIOR  
U. S. GEOLOGICAL SURVEY

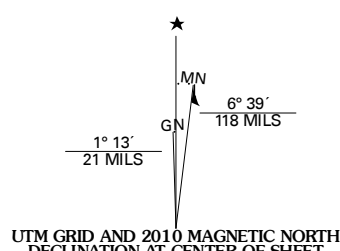


THREE BLUFF DRAW QUADRANGLE  
TEXAS  
7.5-MINUTE SERIES

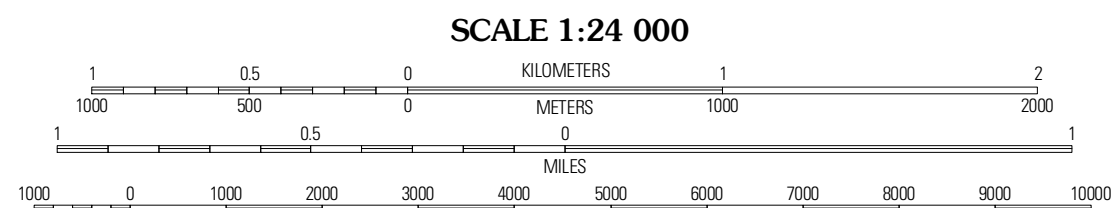


Produced by the United States Geological Survey  
North American Datum of 1983 (NAD83)  
World Geodetic System of 1984 (WGS84). Projection and  
1 000-meter grid; Universal Transverse Mercator, Zone 14R  
10 000-foot ticks; Texas Coordinate System of 1983  
(central zone)

Imagery.....NAIP, September 2008  
Roads.....US Census Bureau TIGER data  
with limited USGS updates, 2008  
Names.....GNIS, 2008  
Hydrography.....National Hydrography Dataset, 1995  
Contours.....National Elevation Dataset, 2007



U.S. National Grid	
100,000m Square ID	
KA	00
KV	00
Grid Zone Designation	
14R	



CONTOUR INTERVAL 10 FEET

This map was produced to conform with version 0.5.10 of the  
draft USGS Standards for 7.5-Minute Quadrangle Maps.  
A metadata file associated with this product is also draft version 0.5.10



QUADRANGLE LOCATION		
Three Bluff Draw NW	Three Bluff Draw NE	Coon Draw NW
Three Bluff Draw SW	Three Bluff Draw	Hay Hollow
Moore Hill	South Mustang Draw NE	Cassidy Draw

ADJOINING 7.5 QUADRANGLES  
TX 31101-421

ROAD CLASSIFICATION	
Interstate Route	State Route
US Route	Local Road
Ramp	4WD
Interstate Route	US Route
	State Route

THREE BLUFF DRAW, TX  
2010