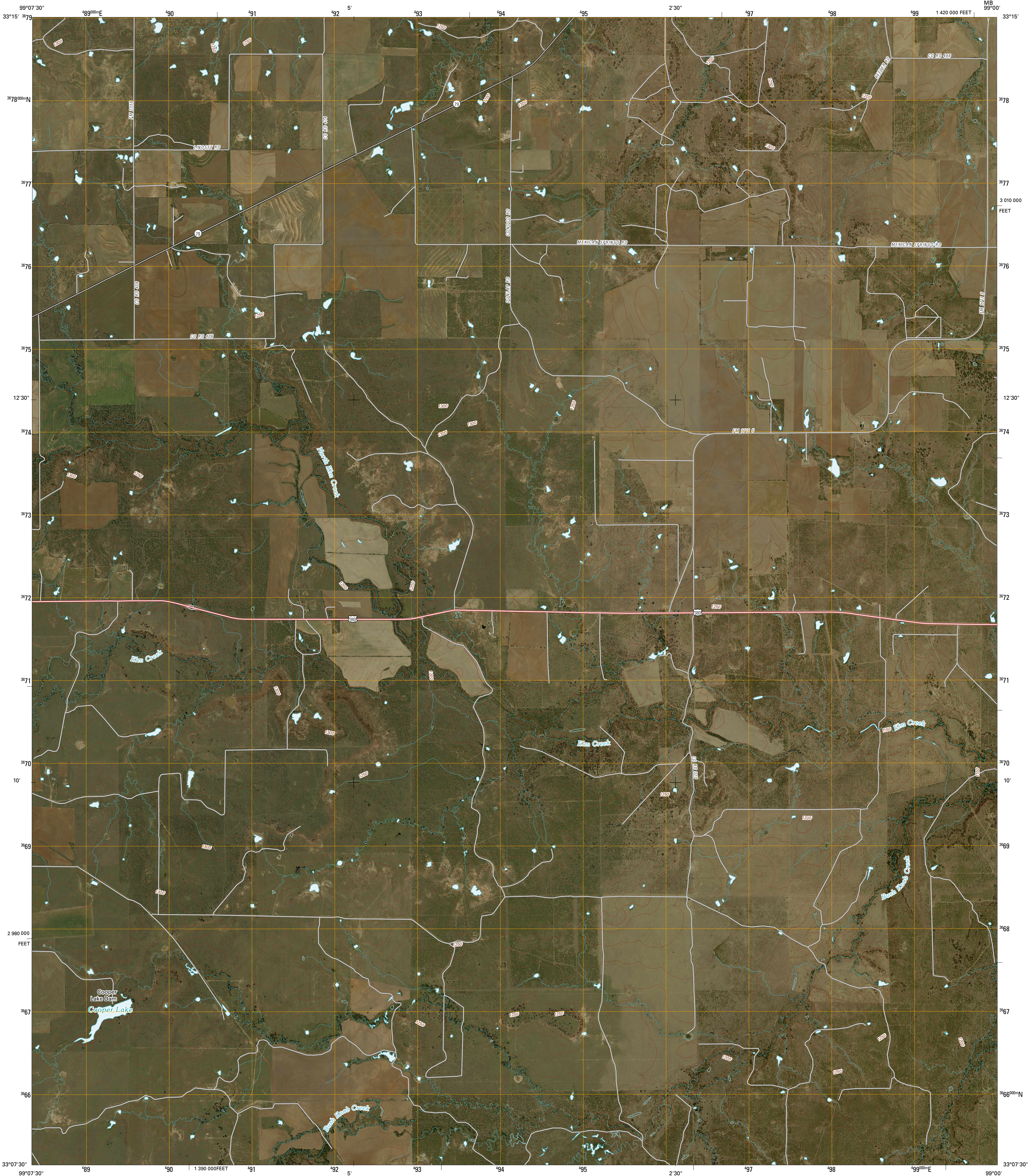




U.S. DEPARTMENT OF THE INTERIOR  
U. S. GEOLOGICAL SURVEY

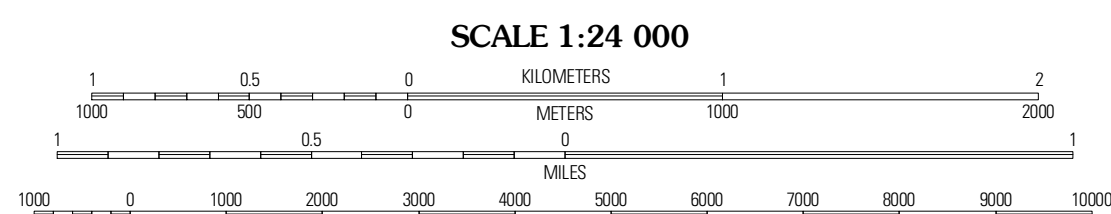
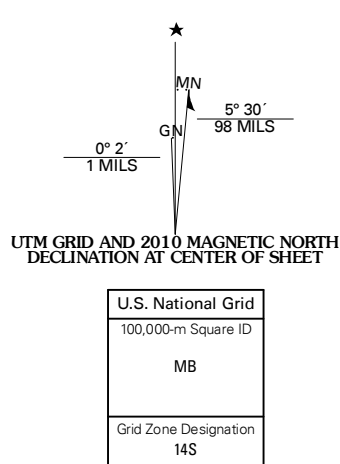


THROCKMORTON NE QUADRANGLE  
TEXAS  
7.5-MINUTE SERIES



Produced by the United States Geological Survey  
North American Datum of 1983 (NAD83)  
US Census Bureau TIGER data with limited USGS updates, 2008  
World Geodetic System of 1984 (WGS84), Projection and 1 000-meter grid; Universal Transverse Mercator, Zone 14S  
10 000-foot ticks: Texas Coordinate System of 1983 (north central zone)

Imagery.....NAP, September 2008  
Roads.....US Census Bureau TIGER data with limited USGS updates, 2008  
Names.....GNIS, 2008  
Hydrography.....National Hydrography Dataset, 1995  
Contours.....National Elevation Dataset, 2005



SCALE 1:24 000

CONTOUR INTERVAL 10 FEET

This map was produced to conform with version 0.5.10 of the draft USGS Standards for 7.5-Minute Quadrangle Maps. A metadata file associated with this product is also draft version 0.5.10



QUADRANGLE LOCATION

Westover SW	Westover SE	Pudgett
Throckmorton	Throckmorton NE	Proffitt Crossing
Sibley Creek	Woodson	Murray

ADJOINING 7.5 QUADRANGLES  
TX 3399-114

ROAD CLASSIFICATION

Interstate Route	State Route
US Route	Local Road
Ramp	4WD
	State Route

THROCKMORTON NE, TX  
2010