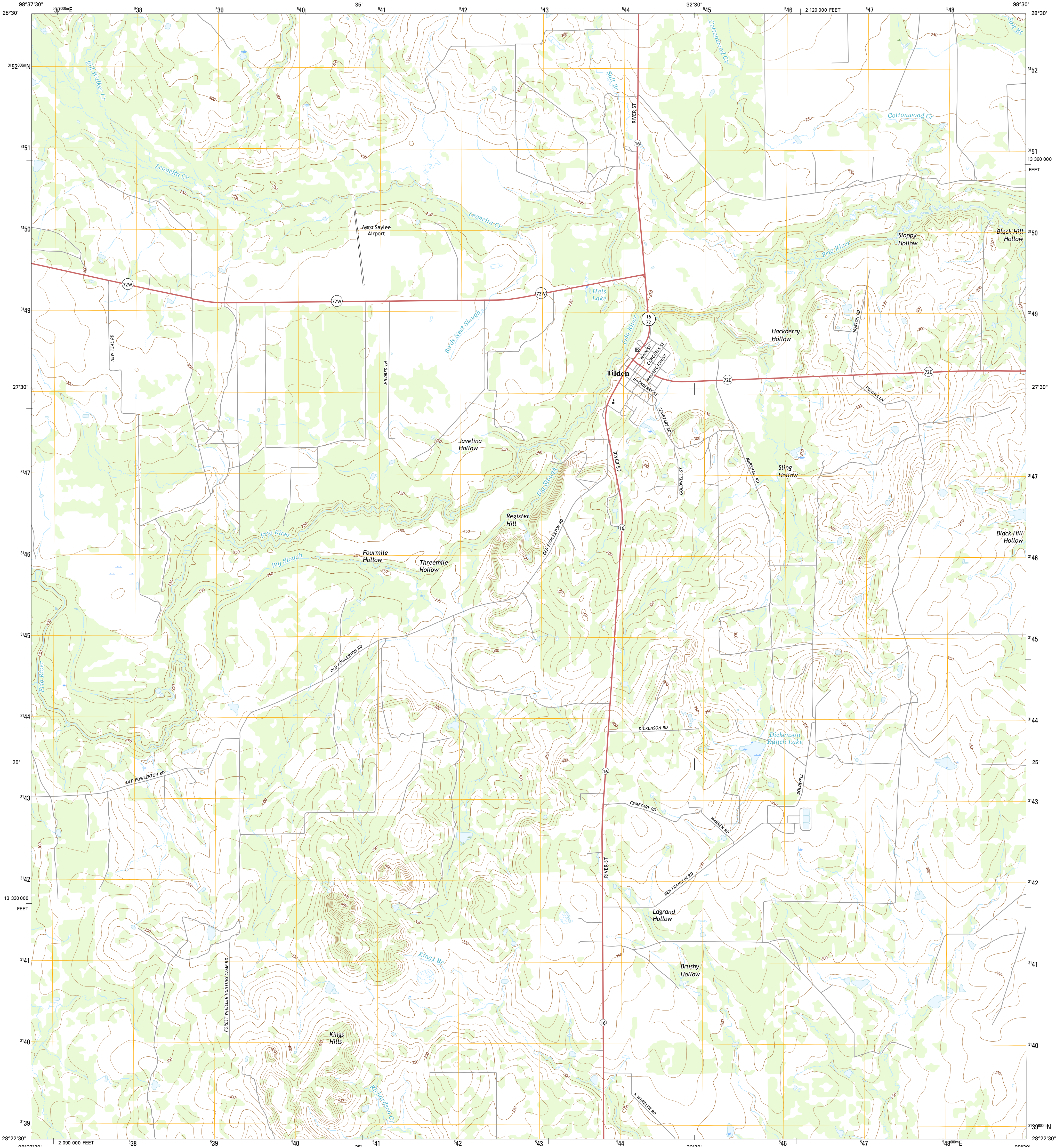




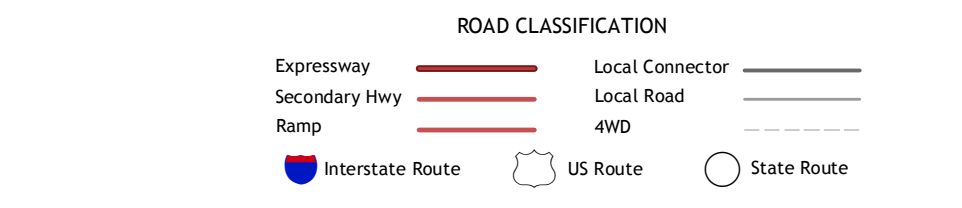
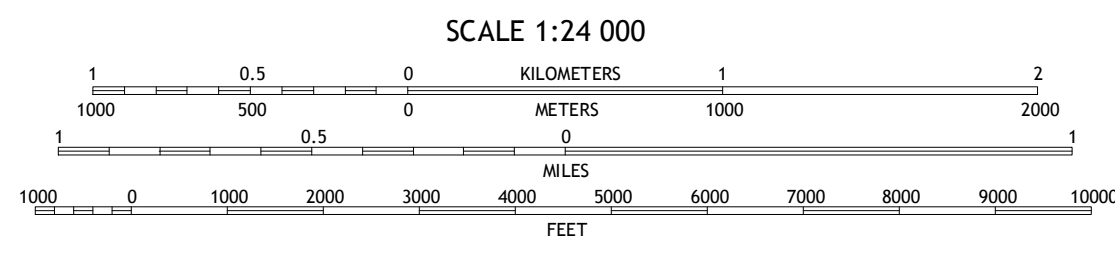
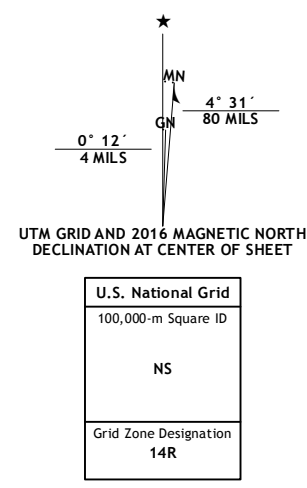
U.S. DEPARTMENT OF THE INTERIOR
U.S. GEOLOGICAL SURVEY



TILDEN QUADRANGLE
TEXAS-MCMULLEN CO.
7.5-MINUTE SERIES



Produced by the United States Geological Survey
 North American Datum of 1983 (NAD83)
 World Geodetic System of 1984 (WGS84), Projection and
 1 000-meter grid: Universal Transverse Mercator, Zone 14R
 10 000-foot ticks: Texas Coordinate System of 1983 (south
 central zone)
 This map is not a legal document. Boundaries may be
 generalized for this map scale. Private lands within government
 reservations may not be shown. Obtain permission before
 entering private lands.
 Imagery.....NAIP, May 2014
 Roads.....U.S. Census Bureau, 2014 - 2015
 Names.....GNIS, 2015
 Hydrography.....National Hydrography Dataset, 2014
 Contours.....National Elevation Dataset, 2008
 Boundaries.....Multiple sources; see metadata file 1972 - 2015
 Wetlands.....FWS National Wetlands Inventory 1977 - 2014



ADJOINING QUADRANGLES

1	2	3
4	5	6
7	8	

1 Pertle Creek
2 Grass
3 Crowther
4 Rockaway Creek
5 Callham HW
6 Mule Creek
7 Fitzpatrick Hollow
8 San Caja Hill

CONTOUR INTERVAL 10 FEET
NORTH AMERICAN VERTICAL DATUM OF 1988
 This map was produced to conform with the
 National Geospatial Program US Topo Product Standard, 2011.
 A metadata file associated with this product is draft version 0.6.19

TILDEN, TX
2016

