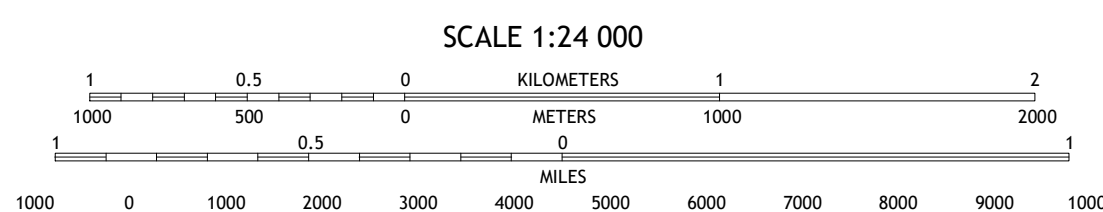
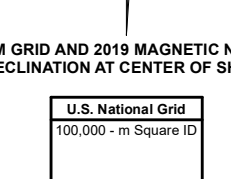
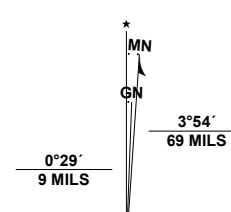


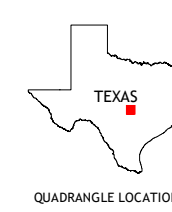
Produced by the United States Geological Survey

North American Datum of 1983 (NAD83) World Geodetic System of 1984 (WGS84) Projection and 1000-meter grid/Universal Transverse Mercator, Zone 14R. This map is not a legal document. Boundaries may be generalized for this map scale. Private lands within government reservations may not be shown. Obtain permission before entering private lands.

Imagery: NAIP, September 2016 - November 2016
Roads: U.S. Census Bureau, 2015 - 2019
Names: GNS, 1979 - 2021
Hydrography: National Hydrography Dataset, 2002 - 2021
Contours: National Elevation Dataset, 2021
Boundaries: Multiple sources; see metadata file 2019 - 2021
Wetlands: FWS National Wetlands Inventory Not Available



CONTOUR INTERVAL 20 FEET NORTH AMERICAN VERTICAL DATUM OF 1988 This map was produced to conform with the National Geospatial Program US Topo Product Standard.



ADJOINING QUADRANGLES table with 8 cells and 8 location names: 1 Mormon Mill, 2 Bertram, 3 Liberty Hill, 4 Smithwick, 5 Nameless, 6 Spicewood, 7 Pace Bend, 8 Mansfield Dam.

ROAD CLASSIFICATION table with 8 categories: Expressway, Secondary Hwy, Ramp, Interstate Route, Local Connector, Local Road, 4WD, US Route, State Route.

