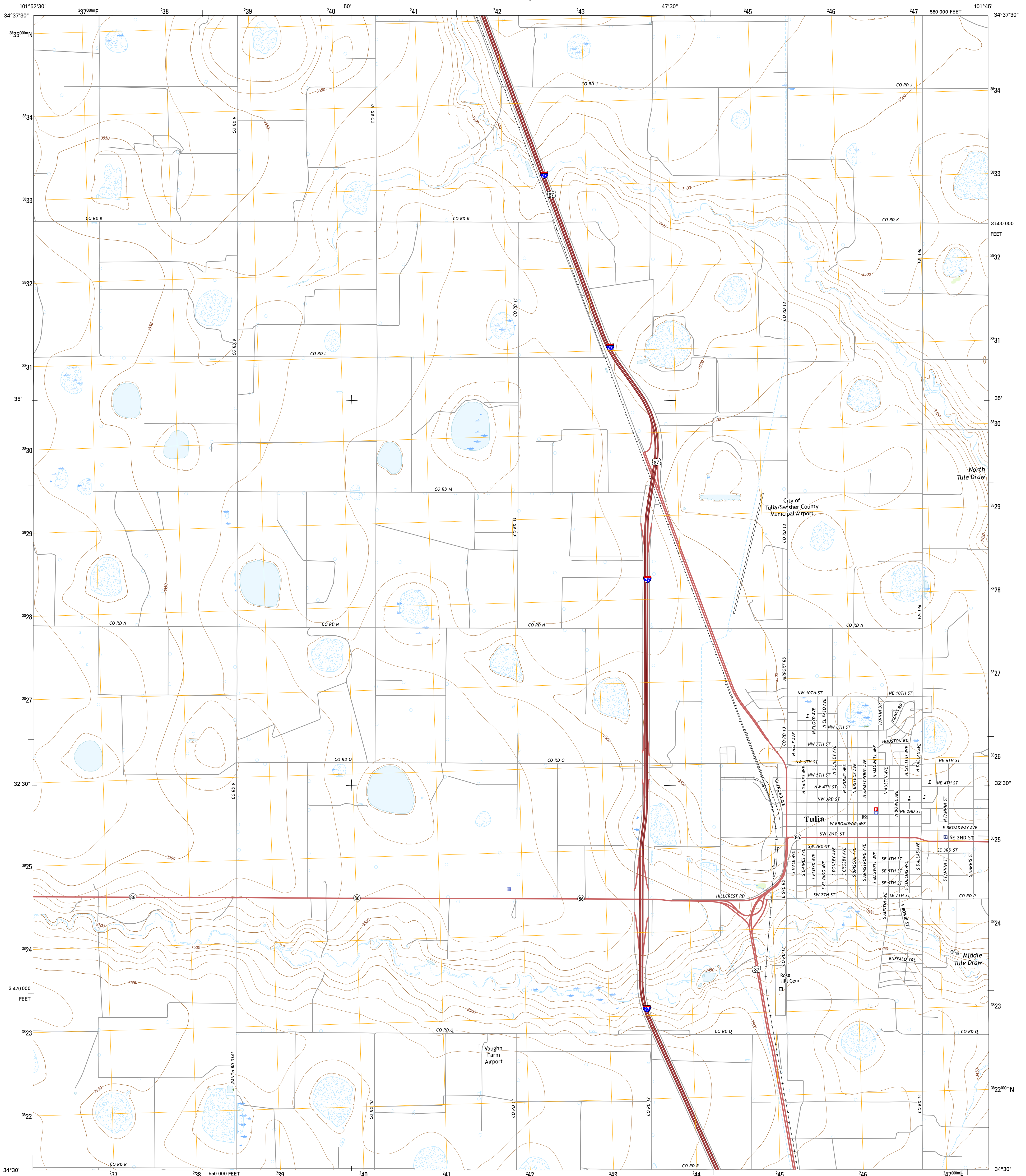




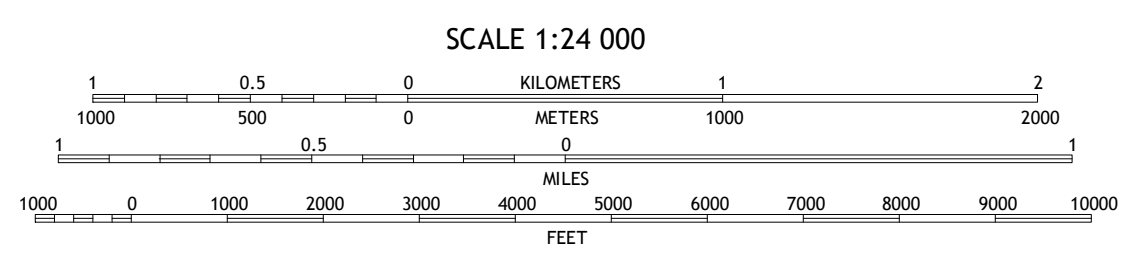
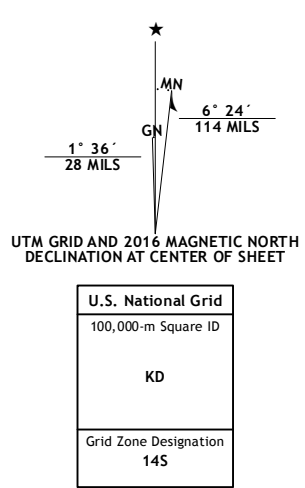
U.S. DEPARTMENT OF THE INTERIOR  
U.S. GEOLOGICAL SURVEY



TULIA QUADRANGLE  
TEXAS-SWISHER CO.  
7.5-MINUTE SERIES



Produced by the United States Geological Survey  
 North American Datum of 1983 (NAD83)  
 World Geodetic System of 1984 (WGS84). Projection and  
 1 000-meter grid: Universal Transverse Mercator, Zone 14S  
 10 000-foot ticks: Texas Coordinate System of 1983 (north zone)  
 This map is not a legal document. Boundaries may be  
 generalized for this map scale. Private lands within government  
 reservations may not be shown. Obtain permission before  
 entering private lands.  
 Imagery.....NAIP, August 2014  
 Roads.....U.S. Census Bureau, 2014 - 2015  
 Names.....GNIS, 2015  
 Hydrography.....National Hydrography Dataset, 2014  
 Contours.....National Elevation Dataset, 2007  
 Boundaries.....Multiple sources; see metadata file 1972 - 2015  
 Wetlands.....FWS National Wetlands Inventory 1977 - 2014



ROAD CLASSIFICATION

Expressway	Local Connector
Secondary Hwy	Local Road
Ramp	4WD
Interstate Route	US Route
	State Route

ADJOINING QUADRANGLES

1	2	3
4	5	6
7	8	

1 Tulia NW  
 2 Happy  
 3 Tule Lake NW  
 4 Lakeview  
 5 Tule Lake  
 6 Center Plains School  
 7 Edmonson NE  
 8 Claytonville NW

TULIA, TX  
2016

