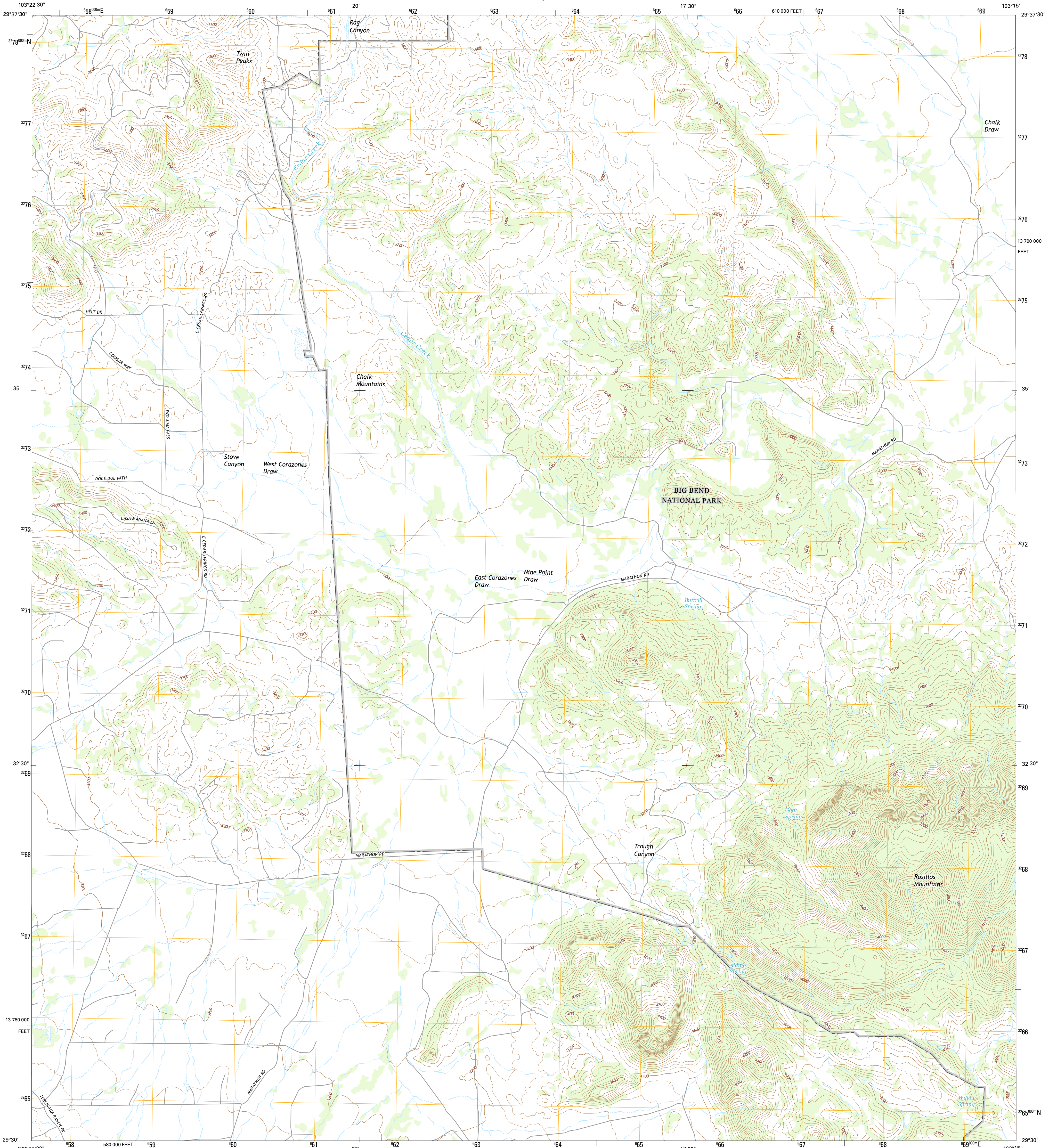




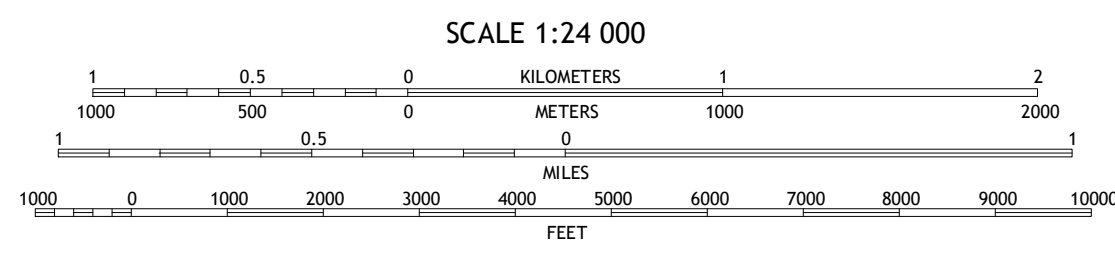
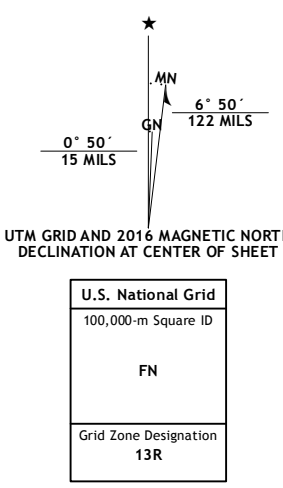
U.S. DEPARTMENT OF THE INTERIOR
U.S. GEOLOGICAL SURVEY



TWIN PEAKS QUADRANGLE
TEXAS-BREWSTER CO.
7.5-MINUTE SERIES



Produced by the United States Geological Survey
 North American Datum of 1983 (NAD83)
 World Geodetic System of 1984 (WGS84). Projection and
 1 000-meter grid: Texas Coordinate System of 1983 (south
 central zone)
 10 000-foot ticks: Texas Coordinate System of 1983 (south
 central zone)
 This map is not a legal document. Boundaries may be
 generalized for this map scale. Private lands within government
 reservations may not be shown. Obtain permission before
 entering private lands.
 Imagery.....NAIP, October 2014
 Roads.....U.S. Census Bureau, 2014 - 2015
 Names.....U.S. Census Bureau, 2014 - 2015
 Hydrography.....National Hydrography Dataset, 2014
 Contours.....National Elevation Dataset, 2006
 Boundaries.....Multiple sources; see metadata file 1972 - 2015
 Wetlands.....FWS National Wetlands Inventory 1977 - 2014



CONTOUR INTERVAL 40 FEET
 NORTH AMERICAN VERTICAL DATUM OF 1988
 This map was produced to conform with the
 National Geospatial Program US Topo Product Standard, 2011.
 A metadata file associated with this product is draft version 0.6.19



ADJOINING QUADRANGLES

1	2	3
4	5	6
7	8	

1 Graytop
 2 Butterbowl
 3 Persimmon Gap
 4 White Hills
 5 Bone Spring
 6 Christmas Mountains
 7 Sombrero Peak
 8 Grapevine Hills

ROAD CLASSIFICATION

Expressway	Local Connector
Secondary Hwy	Local Road
Ramp	4WD
Interstate Route	US Route
	State Route

TWIN PEAKS, TX
2016

