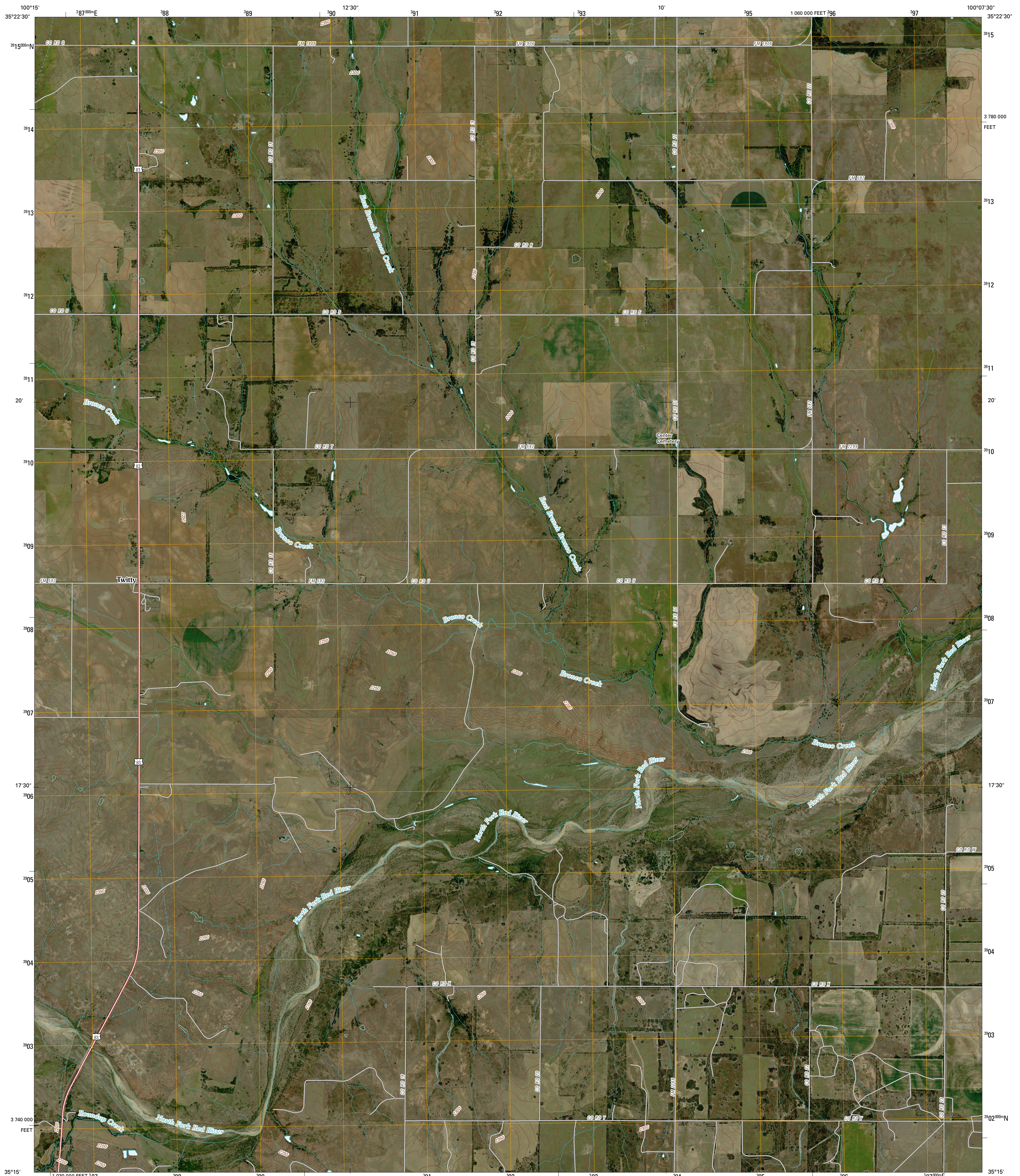




U.S. DEPARTMENT OF THE INTERIOR
U. S. GEOLOGICAL SURVEY

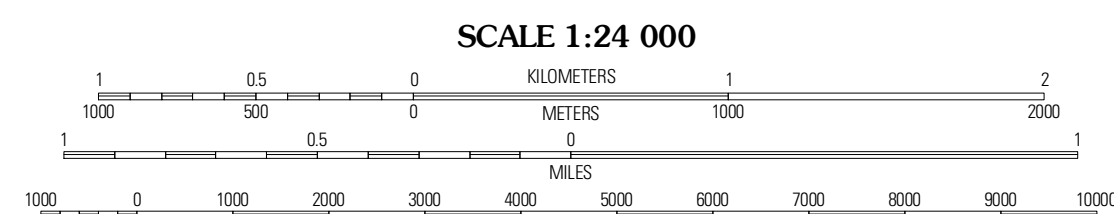
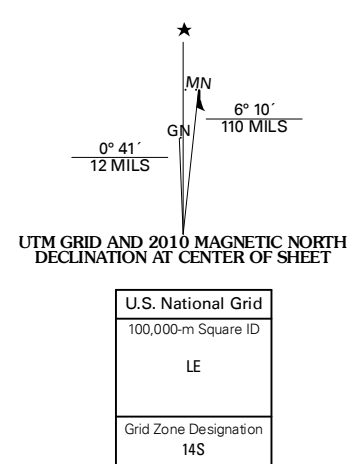


TWITTY QUADRANGLE
TEXAS
7.5-MINUTE SERIES



Produced by the United States Geological Survey
North American Datum of 1983 (NAD83)
World Geodetic System of 1984 (WGS84). Projection and
1 000-meter grid: Universal Transverse Mercator, Zone 14S
10 000-foot ticks: Texas Coordinate System of 1983
(north zone)

Imagery: NAIP, August 2008
Roads: US Census Bureau TIGER data
with limited USGS updates, 2005
Names: GNIS, 2008
Hydrography: National Hydrography Dataset, 1995
Contours: National Elevation Dataset, 2002



SCALE 1:24 000

CONTOUR INTERVAL 10 FEET

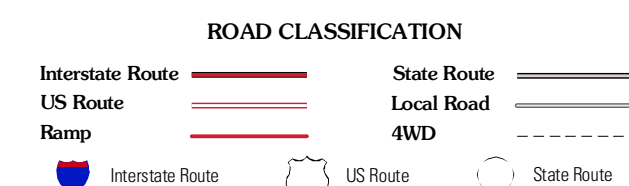
This map was produced to conform with version 0.5.10 of the
draft USGS Standards for 7.5-Minute Quadrangle Maps.
A metadata file associated with this product is also draft version 0.5.10



QUADRANGLE LOCATION

Wheeler	Kelton NW	Kelton
Wheeler SE	Twitty	Kelton SE
Shamrock West	Shamrock East	Fuller

ADJOINING 7.5' QUADRANGLES
TX 35100-142



TWITTY, TX
2010