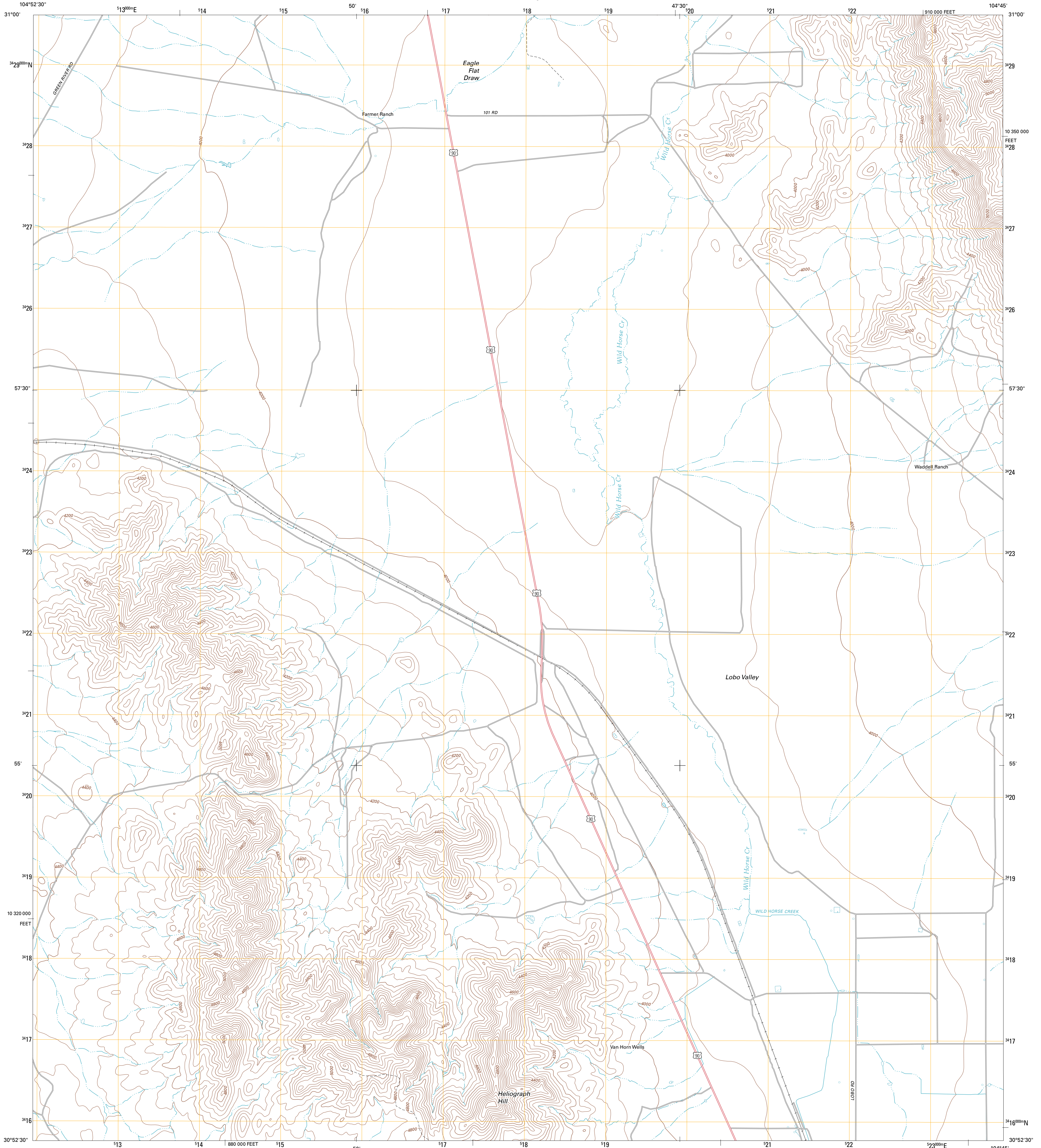




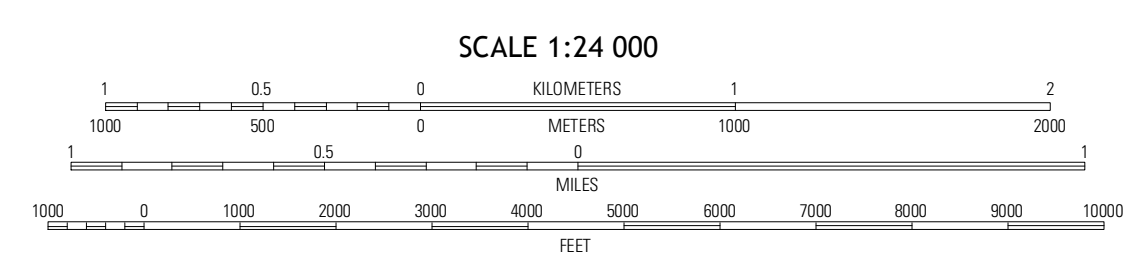
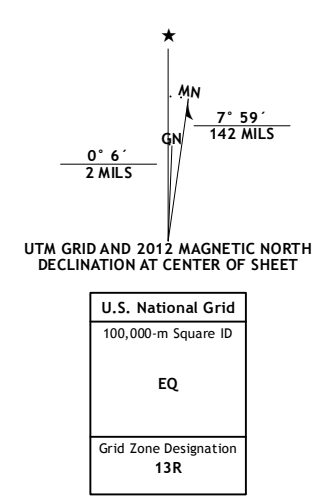
U.S. DEPARTMENT OF THE INTERIOR
U. S. GEOLOGICAL SURVEY



VAN HORN WELLS QUADRANGLE
TEXAS-CULBERSON CO.
7.5-MINUTE SERIES



Produced by the United States Geological Survey
North American Datum of 1983 (NAD83)
World Geodetic System of 1984 (WGS84). Projection and
1 000-meter grid: Universal Transverse Mercator, Zone 13R
10 000-foot ticks: Texas Coordinate System of 1983 (central
zone)



QUADRANGLE LOCATION

Hackett Peak	Van Horn	Wild Horse
Bass Canyon	Van Horn Wells	Chipsa Mountain NW
Lobo SW	Lobo	Chipsa Mountain

ROAD CLASSIFICATION

Interstate Route	State Route
US Route	Local Road
Ramp	4WD

VAN HORN WELLS, TX
2012

This map was produced to conform with the National Geospatial Program US Topo Product Standard, 2011. A metadata file associated with this product is draft version 0.6.7