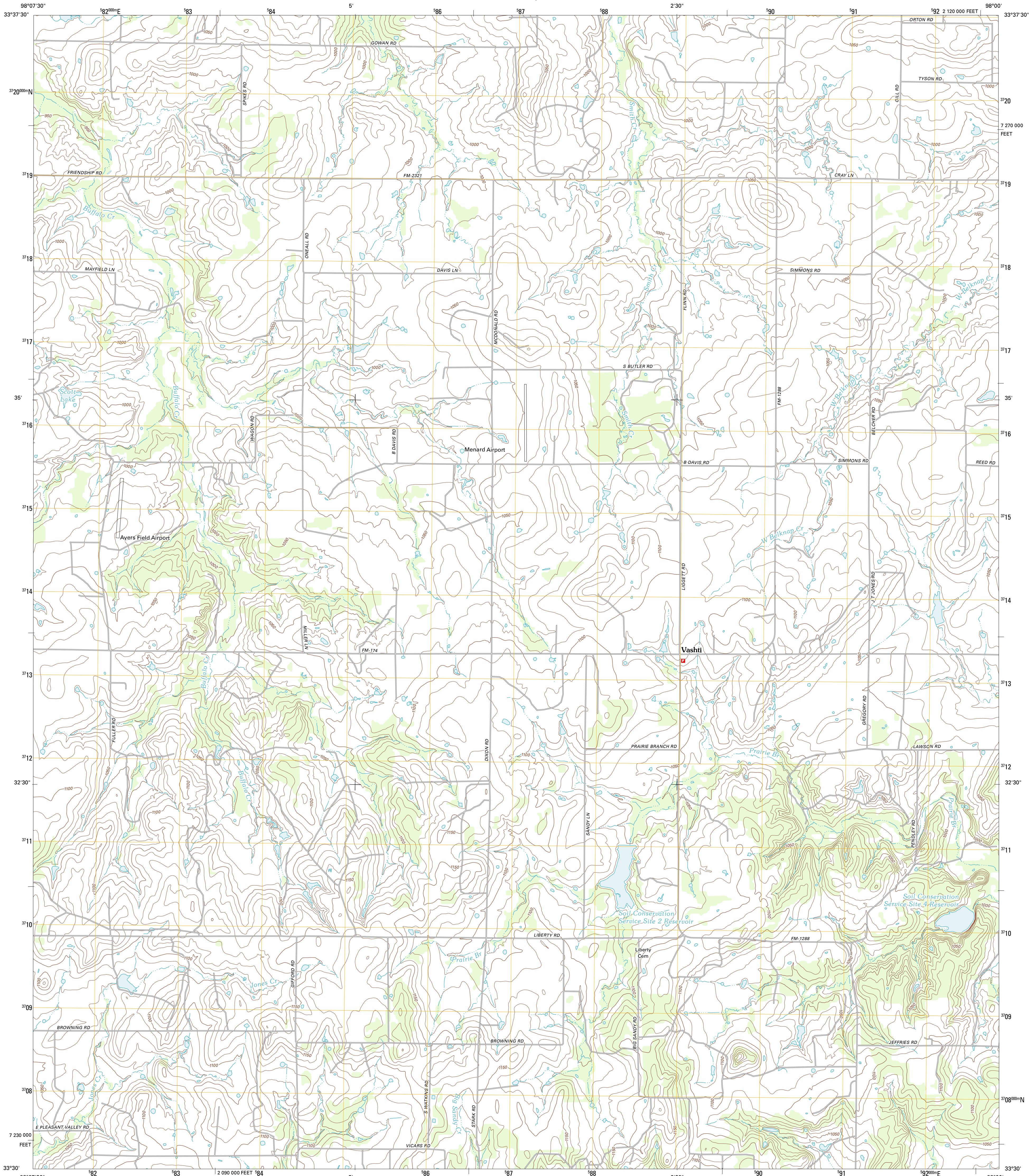




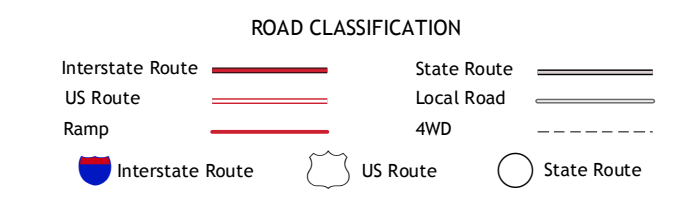
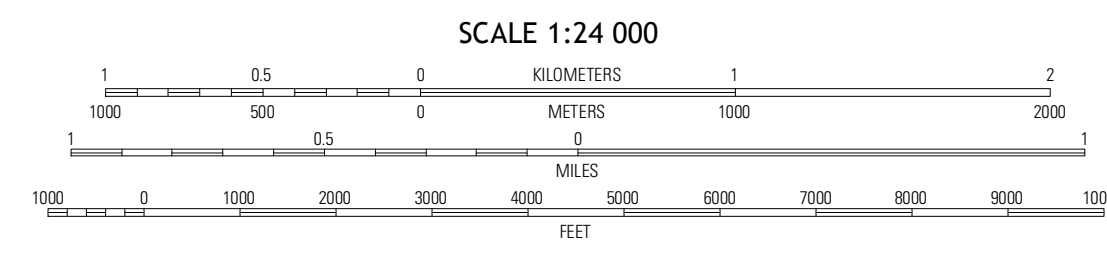
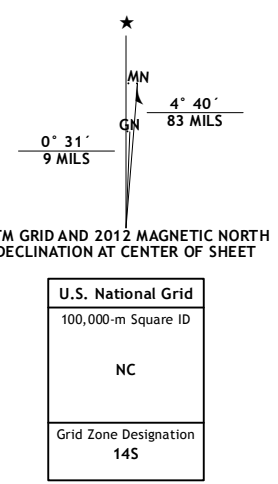
U.S. DEPARTMENT OF THE INTERIOR  
U. S. GEOLOGICAL SURVEY



VASHTI QUADRANGLE  
TEXAS-CLAY CO.  
7.5-MINUTE SERIES



Produced by the United States Geological Survey  
North American Datum of 1983 (NAD83)  
World Geodetic System of 1984 (WGS84). Projection and  
1 000-meter grid: Universal Transverse Mercator, Zone 14S  
10 000-foot ticks: Texas Coordinate System of 1983 (north  
central zone)



QUADRANGLE LOCATION

Blugrove	Bellevue	Stoneburg
Joy	Vashti	Brushy Mound
Postok	Newport	Selma

ADJOINING 7.5 QUADRANGLES

Imagery.....NAIP, July 2010  
Roads.....©2006-2012 TomTom  
Names.....©2006-2012 TomTom  
Hydrography.....National Hydrography Dataset, 2010  
Contours.....National Elevation Dataset, 2005  
Boundaries.....Census, IBWC, IBC, USGS, 1972 - 2012

This map was produced to conform with the  
National Geospatial Program US Topo Product Standard, 2011.  
A metadata file associated with this product is draft version 0.6.7

VASHTI, TX  
2012