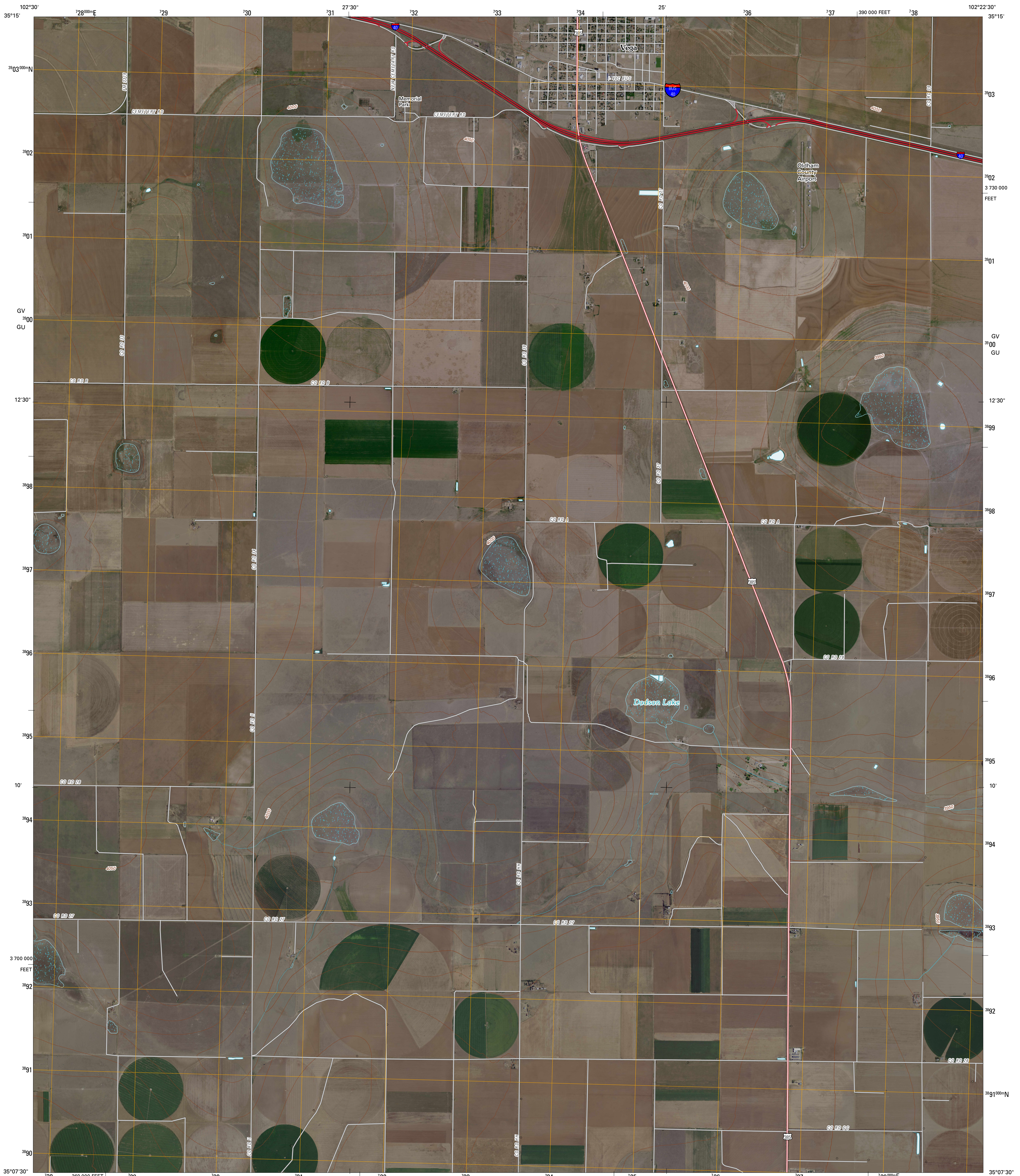




U.S. DEPARTMENT OF THE INTERIOR  
U. S. GEOLOGICAL SURVEY



VEGA SOUTH QUADRANGLE  
TEXAS  
7.5-MINUTE SERIES



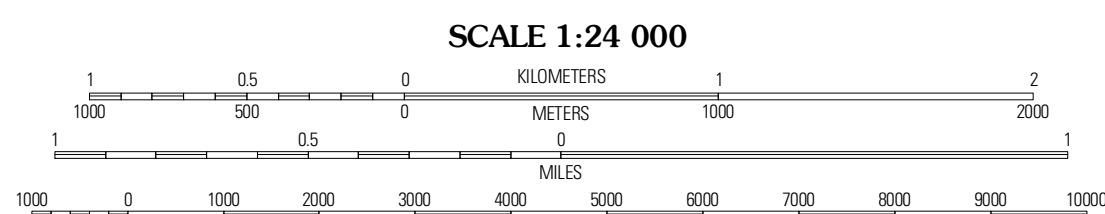
Produced by the United States Geological Survey  
North American Datum of 1983 (NAD83)  
World Geospatial System of 1984 (WGS84). Projection and  
1 000-meter grid, Universal Transverse Mercator, Zone 13S  
10 000-foot ticks: Texas Coordinate System of 1983  
(north zone)

Imagery:.....NAIP, August 2008  
Roads:.....US Census Bureau TIGER data  
with limited USGS updates, 2005  
Names:.....GNIS, 2008  
Hydrography:.....National Hydrography Dataset, 1995  
Contours:.....National Elevation Dataset, 2002

UTM GRID AND 2011 MAGNETIC NORTH  
DECLINATION AT CENTER OF SHEET

MN  
A  
N  
12° 24'  
28" MILLS

U.S. National Grid 100,000m Square ID	GV	00
Grid Zone Designation	13S	



CONTOUR INTERVAL 10 FEET

This map was produced to conform with version 0.5.10 of the  
draft USGS Standards for 7.5-Minute Quadrangle Maps.  
A metadata file associated with this product is also draft version 0.5.10



QUADRANGLE LOCATION

Landergin	Vega North	Jay Taylor Ranch
Simms NE	Vega South	Everett
Overstreet Lake	Ford	Allison Ranch

ADJOINING 7.5' QUADRANGLES  
TX 35102-123

ROAD CLASSIFICATION

Interstate Route	State Route
US Route	Local Road
Ramp	4WD

VEGA SOUTH, TX  
2010