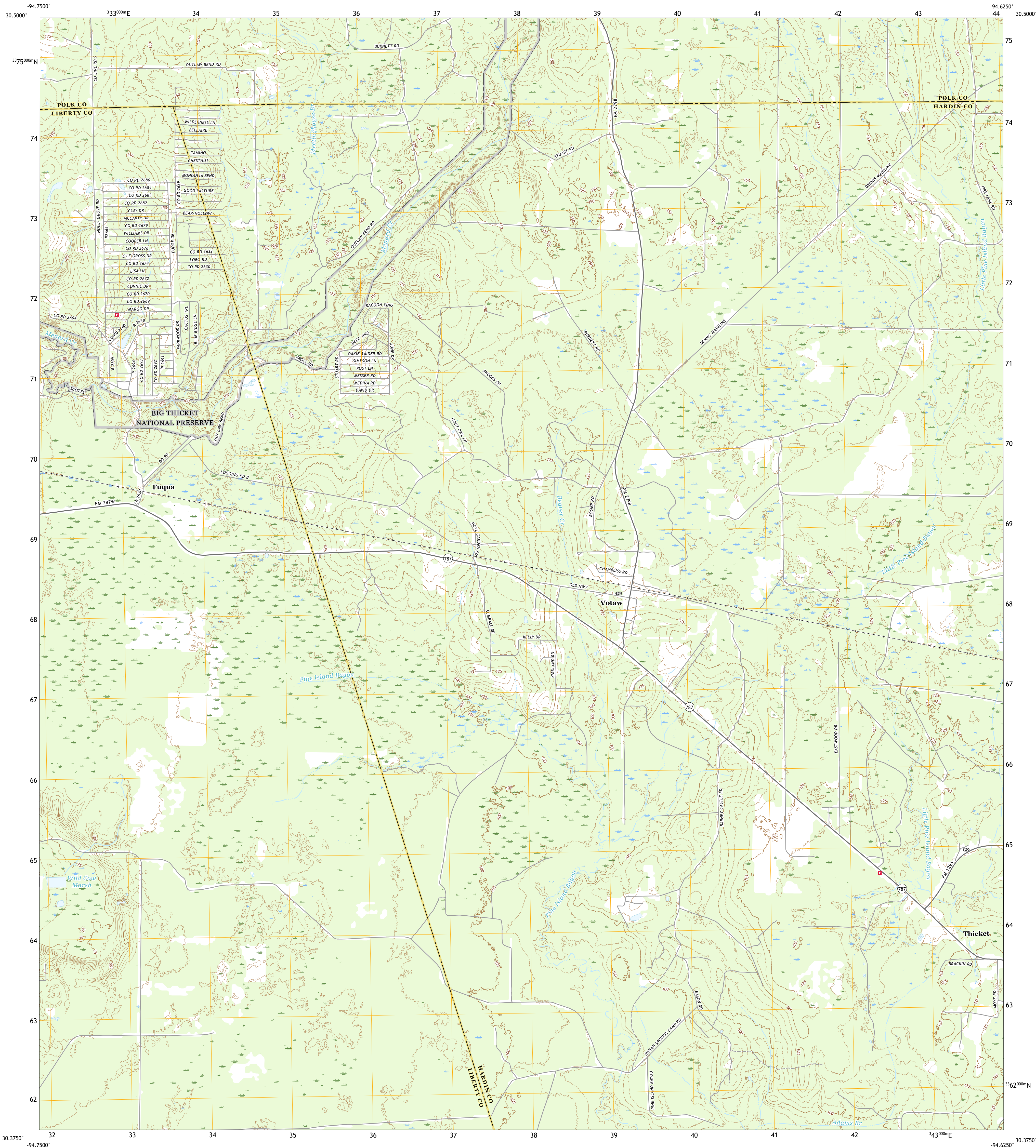




U.S. DEPARTMENT OF THE INTERIOR  
U.S. GEOLOGICAL SURVEY



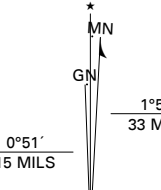
VOTAW QUADRANGLE  
TEXAS  
7.5-MINUTE SERIES



Produced by the United States Geological Survey

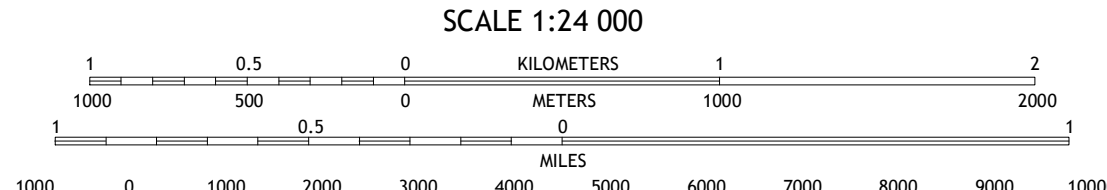
North American Datum of 1983 (NAD83)  
World Geodetic System of 1984 (WGS84) - Projection and  
1 000-meter grid/Universal Transverse Mercator, Zone 15R  
This map is not a legal document. Boundaries may be  
generalized for this map scale. Private lands within government  
reservations may not be shown. Obtain permission before  
entering private lands.

Imagery.....NAIP, September 2016 - November 2016  
Roads.....U.S. Census Bureau, 2015  
Names.....GNIS, 1979 - 2018  
Hydrography.....National Hydrography Dataset, 2003 - 2018  
Contours.....National Elevation Dataset, 2003 - 2018  
Boundaries.....Multiple sources; see metadata file 2016 - 2017  
Wetlands.....FWS National Wetlands Inventory 1982 - 1993



UTM GRID AND 2019 MAGNETIC NORTH  
DECLINATION AT CENTER OF SHEET

U.S. National Grid  
100,000 - m Square ID  
UP  
Grid Zone Designation  
15R



CONTOUR INTERVAL 5 FEET  
NORTH AMERICAN DATUM OF 1988  
This map was produced to conform with the  
National Geospatial Program US Topo Product Standard, 2011.  
A metadata file associated with this product is draft version 0.6.18



QUADRANGLE LOCATION

1	2	3
4	5	6
7	8	

- 1 Schwab City
- 2 Segno
- 3 Jacks Creek South
- 4 Remayor
- 5 Bragg
- 6 Davis Hill
- 7 Arizona Creek
- 8 Saratoga

ROAD CLASSIFICATION

Expressway	Local Connector
Secondary Hwy	Local Road
Ramp	4WD
Interstate Route	US Route
	State Route

VOTAW, TX  
2019



NSN 7540-01-630-8000  
USGS REF. NO. USGS X 2.4 K 4 7 0 4 6