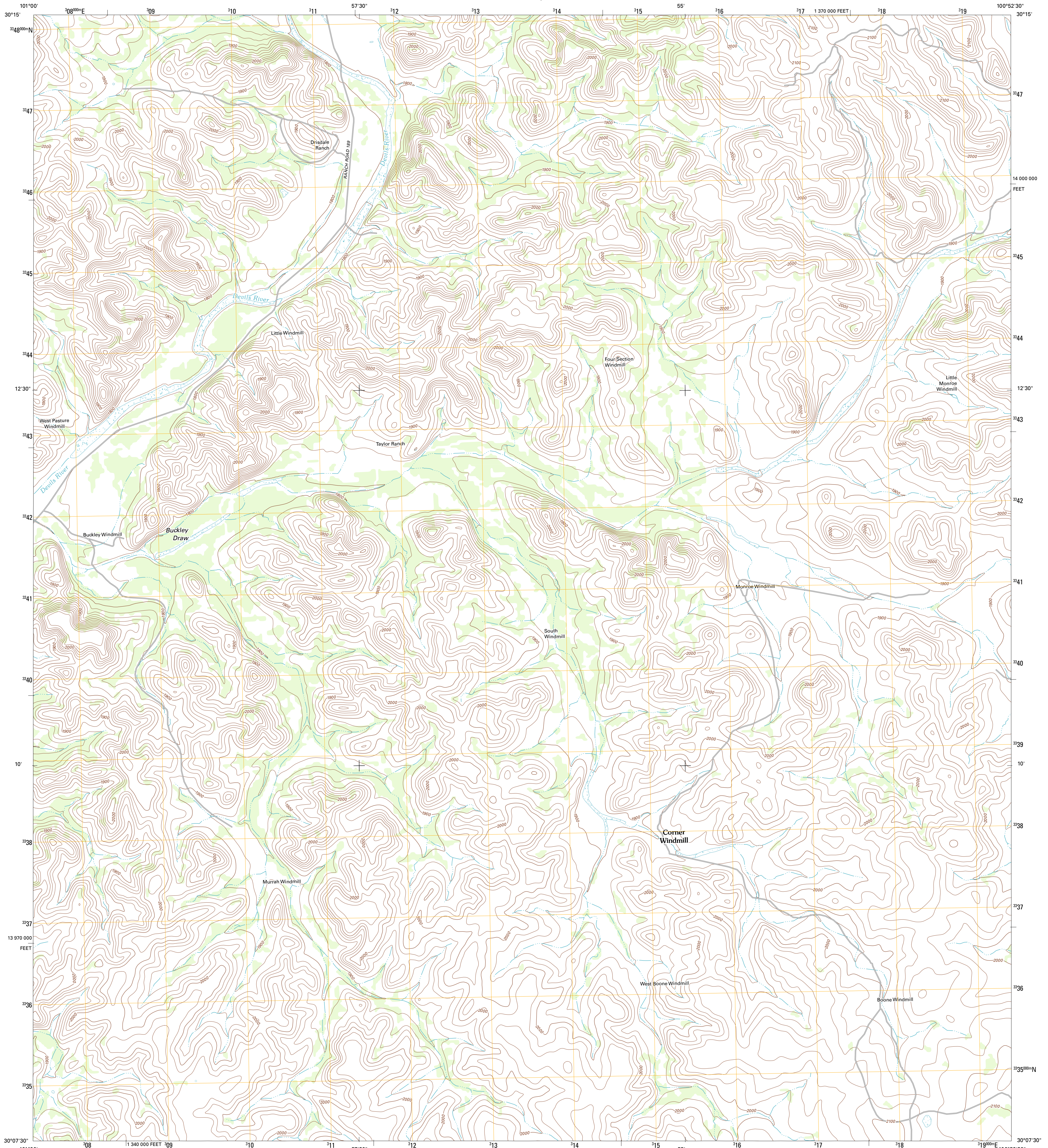




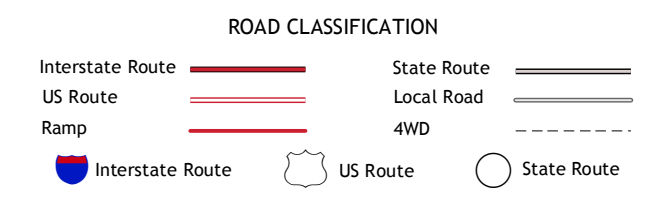
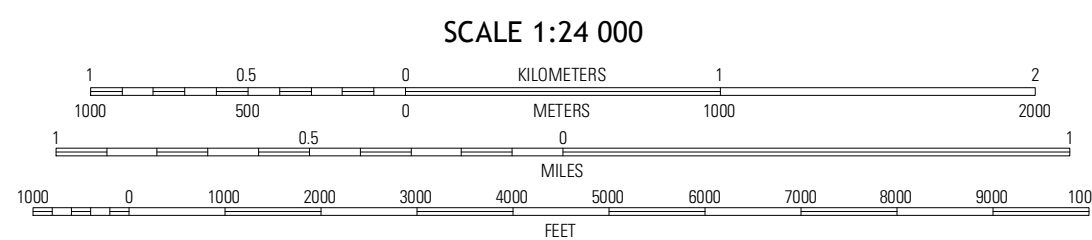
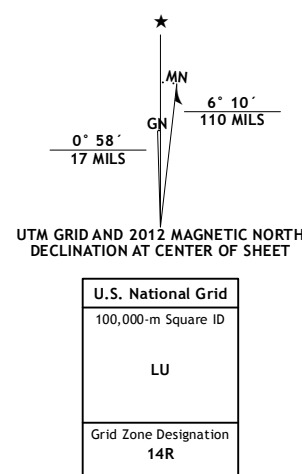
U.S. DEPARTMENT OF THE INTERIOR  
U. S. GEOLOGICAL SURVEY



WHITE DRAW NW QUADRANGLE  
TEXAS-VAL VERDE CO.  
7.5-MINUTE SERIES



Produced by the United States Geological Survey  
North American Datum of 1983 (NAD83)  
World Geodetic System of 1984 (WGS84). Projection and  
1 000-meter grid: Universal Transverse Mercator, Zone 14R  
10 000-foot ticks: Texas Coordinate System of 1983 (south  
central zone)



QUADRANGLE LOCATION

Brosby Draw	Flat Rock Draw SW	Flat Rock Draw SE
Juno	White Draw NW	White Draw NE
Deaton Draw	White Draw	Robinson Draw

Imagery.....NAIP, May 2010  
Roads.....©2006-2012 TomTom  
Names.....GIS, 2012  
Hydrography.....National Hydrography Dataset, 2010  
Contours.....National Elevation Dataset, 2006  
Boundaries.....Census, IBWC, IBC, USGS, 1972 - 2012

CONTOUR INTERVAL 20 FEET  
NORTH AMERICAN VERTICAL DATUM OF 1988

This map was produced to conform with the  
National Geospatial Program US Topo Product Standard, 2011.  
A metadata file associated with this product is draft version 0.6.7

WHITE DRAW NW, TX  
2012

ADJOINING 7.5 QUADRANGLES