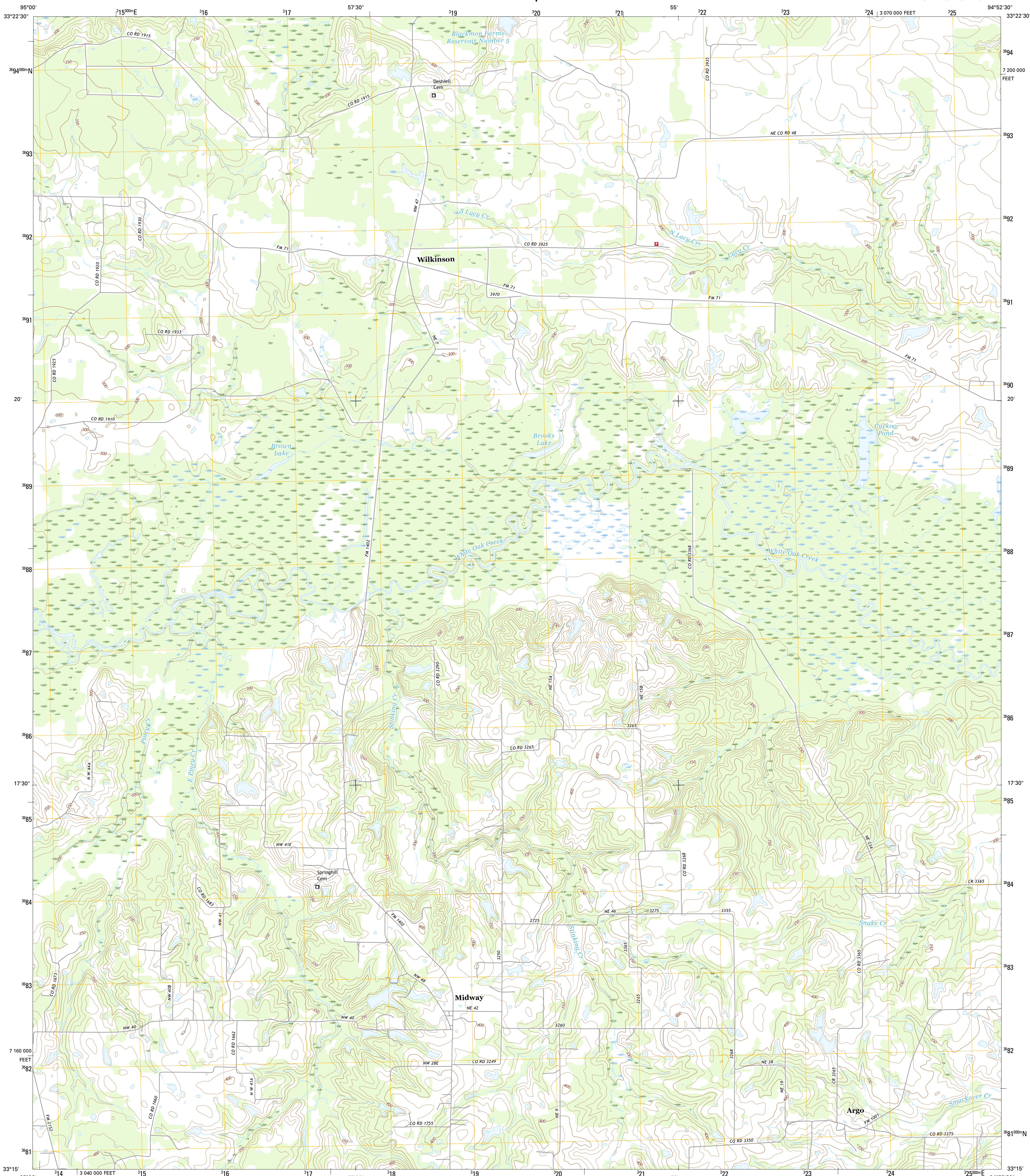




U.S. DEPARTMENT OF THE INTERIOR
U.S. GEOLOGICAL SURVEY



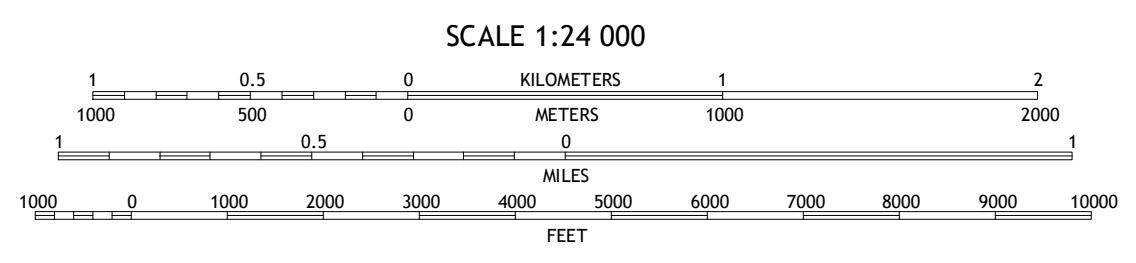
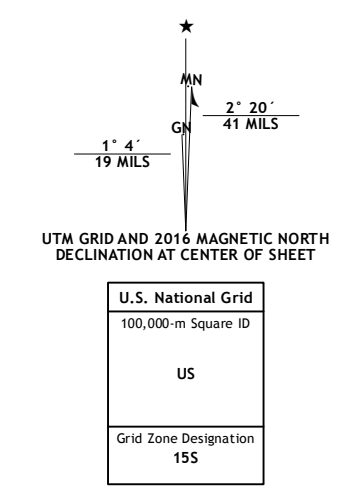
WILKINSON QUADRANGLE
TEXAS-TITUS CO.
7.5-MINUTE SERIES



Produced by the United States Geological Survey
North American Datum of 1983 (NAD83)
World Geodetic System of 1984 (WGS84) Projection and
1 000-meter grid: Universal Transverse Mercator, Zone 15S
10 000-foot ticks: Texas Coordinate System of 1983 (north
central zone)

This map is not a legal document. Boundaries may be
generalized for this map scale. Private lands within government
reservations may not be shown. Obtain permission before
entering private lands.

Imagery: NADIP, August 2014
Roads: U.S. Census Bureau, 2014 - 2015
Names: GNIS, 2015
Hydrography: National Hydrography Dataset, 2014
Contours: National Elevation Dataset, 2004
Boundaries: Multiple sources; see metadata file 1972 - 2015
Wetlands: FWS National Wetlands Inventory 1977 - 2014



CONTOUR INTERVAL 10 FEET
NORTH AMERICAN VERTICAL DATUM OF 1988

This map was produced to conform with the
National Geospatial Program US Topo Product Standard, 2011.
A metadata file associated with this product is draft version 0.6.19



ROAD CLASSIFICATION

Expressway	Local Connector
Secondary Hwy	Local Road
Ramp	4WD
Interstate Route	US Route
	State Route

ADJOINING QUADRANGLES

1	2	3
4	5	6
7	8	

- Cuthand
- Boxelder
- Judita
- Talco
- Coopers Chapel
- Winfield
- Mour Pleasant
- Cookville

WILKINSON, TX
2016



NSN 7540-01-000-0000
NSA REF NO. U.S.G.S.X.2.4.K.4.9.1.3