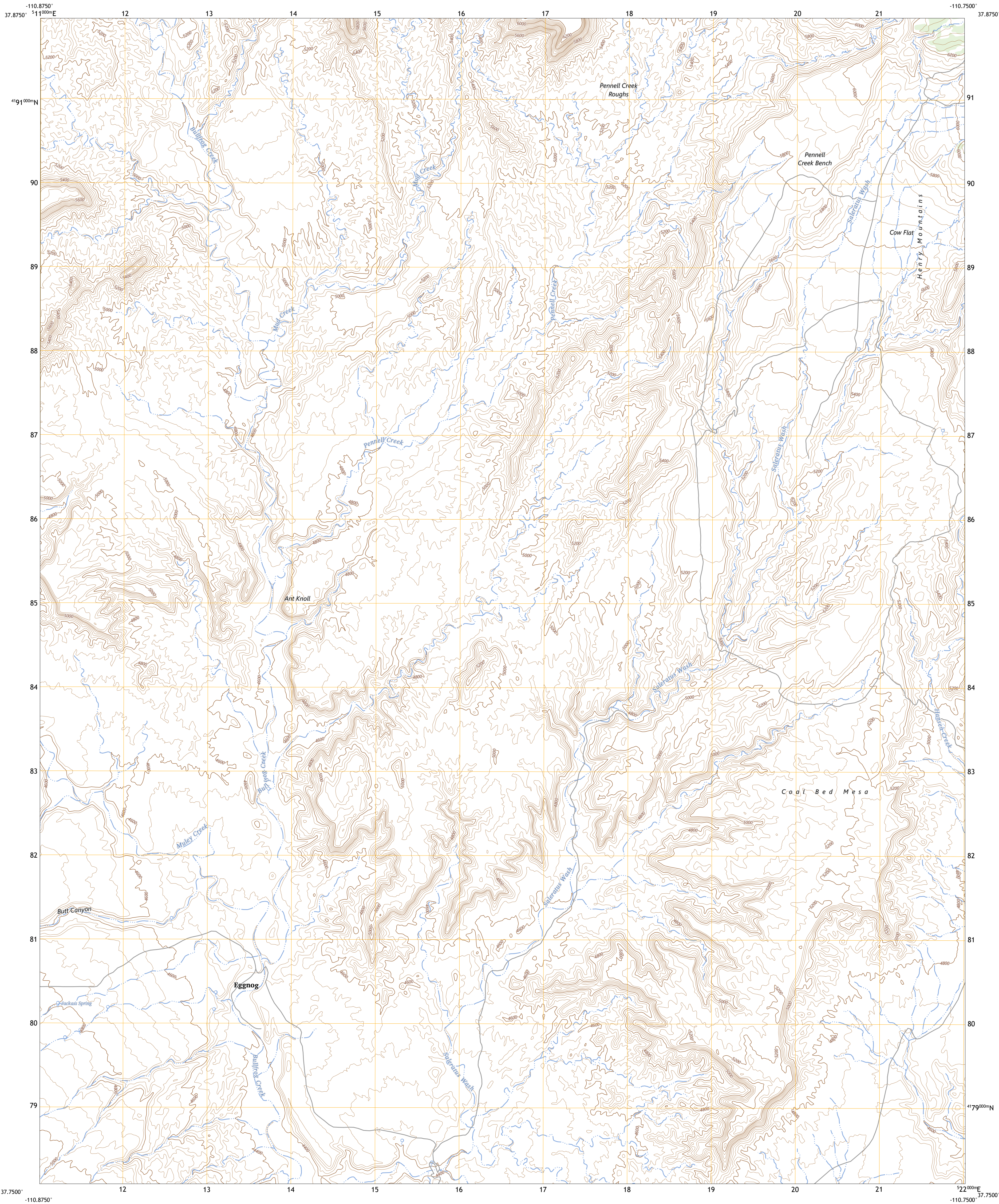




U.S. DEPARTMENT OF THE INTERIOR  
U.S. GEOLOGICAL SURVEY



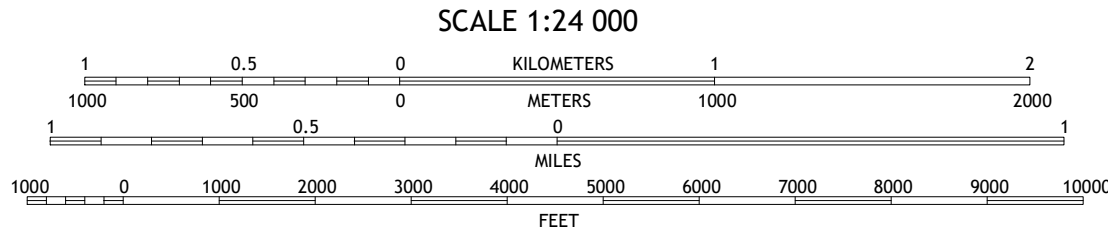
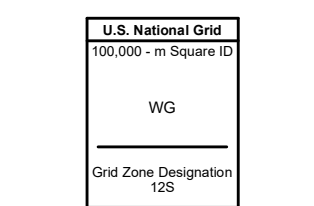
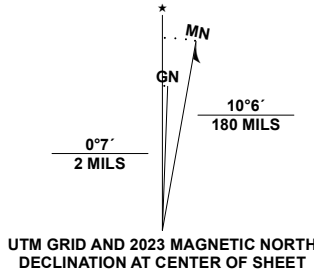
ANT KNOLL QUADRANGLE  
UTAH - GARFIELD COUNTY  
7.5-MINUTE SERIES



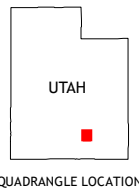
Produced by the United States Geological Survey

North American Datum of 1983 (NAD83)  
World Geodetic System of 1984 (WGS84). Projection and  
1 000-meter grid/Universal Transverse Mercator, Zone 12S  
This map is not a legal document. Boundaries may be  
generalized for this map scale. Private lands within government  
reservations may not be shown. Obtain permission before  
entering private lands.

Imagery.....NAIP, July 2018 - August 2018  
Roads.....U.S. Census Bureau, 2016  
Names.....GNIS, 1979 - 2022  
Hydrography.....National Hydrography Dataset, 2002 - 2022  
Contours.....National Elevation Dataset, 2021  
Boundaries.....Multiple sources: see metadata file, 2021 - 2022  
Public Land Survey System.....BLM, 2019  
Wetlands.....FWS National Wetlands Inventory 1980 - 1986



CONTOUR INTERVAL 40 FEET  
NORTH AMERICAN VERTICAL DATUM OF 1988  
This map was produced to conform with the  
National Geospatial Program US Topo Product Standard.



1	2	3
4	5	6
7	8	9

- 1 Cave Flat  
2 Mount Pennell  
3 Cass Creek Peak  
4 The Post  
5 Copper Creek Benches  
6 Deer Point  
7 Clay Point  
8 Lost Spring

ROAD CLASSIFICATION	
Expressway	Local Connector
Secondary Hwy	Local Road
Ramp	4WD
Interstate Route	US Route
	State Route

ANT KNOLL, UT  
2023

