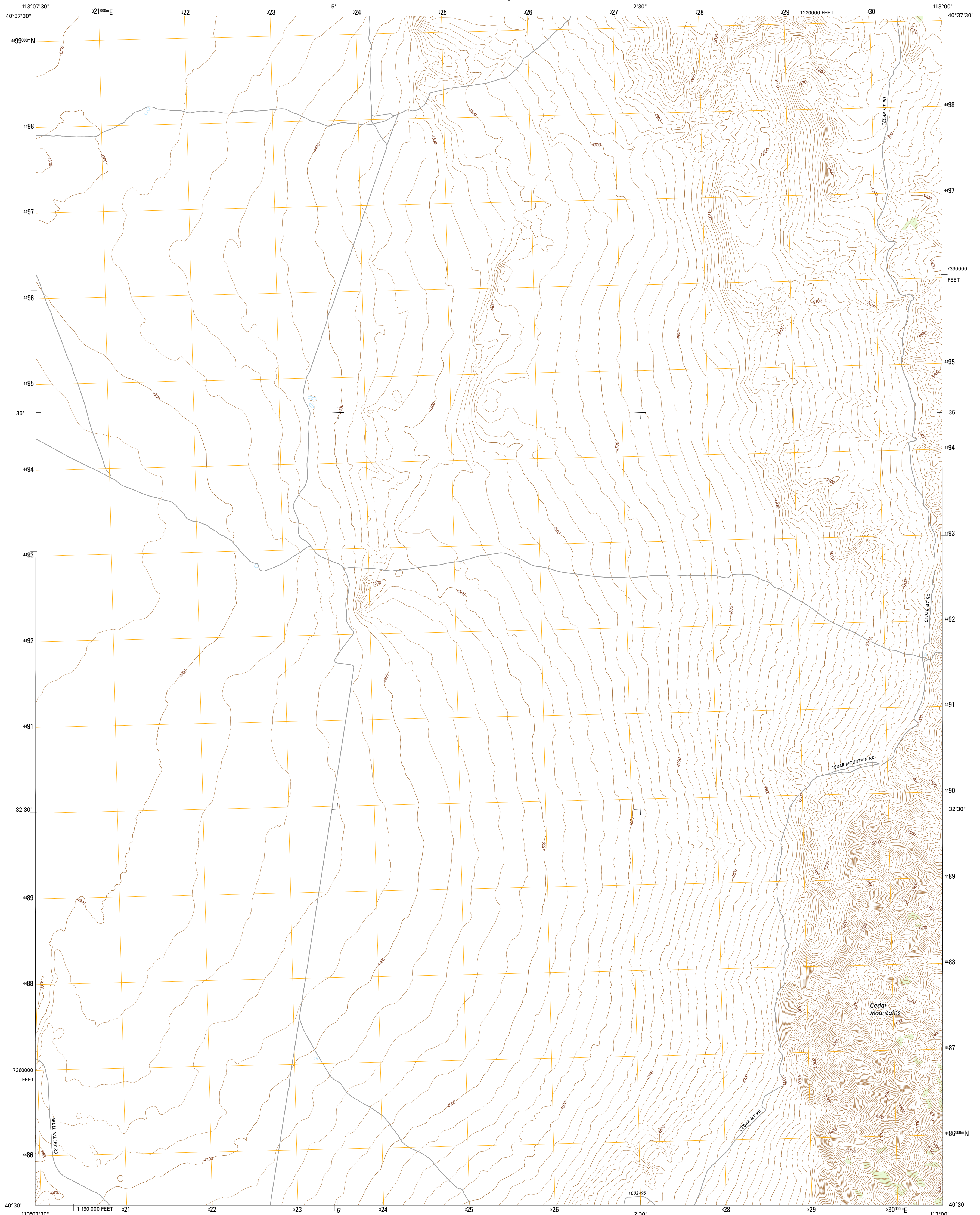




U.S. DEPARTMENT OF THE INTERIOR
U.S. GEOLOGICAL SURVEY



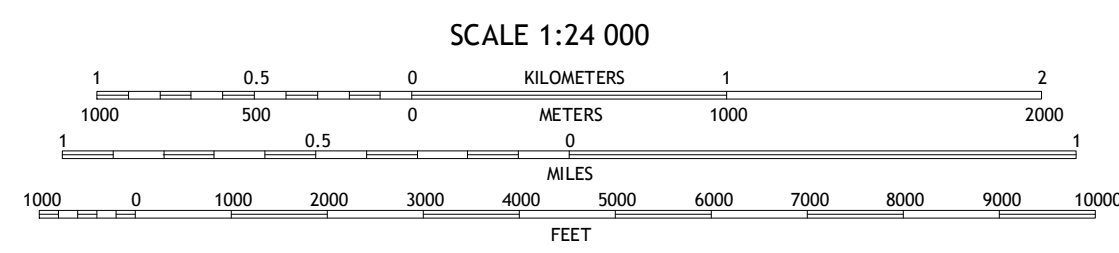
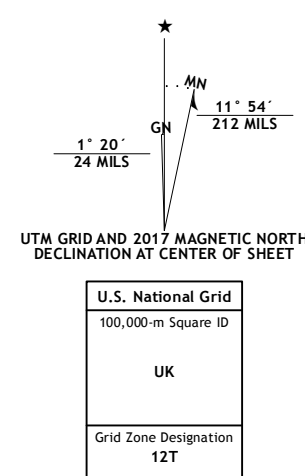
ARAGONITE SE QUADRANGLE
UTAH-TOOLE CO.
7.5-MINUTE SERIES



Produced by the United States Geological Survey
North American Datum of 1983 (NAD83)
World Geodetic System of 1984 (WGS84), Projection and
1 000-meter grid; Universal Transverse Mercator, Zone 12T
10 000-foot ticks: Utah Coordinate System of 1983 (central zone)

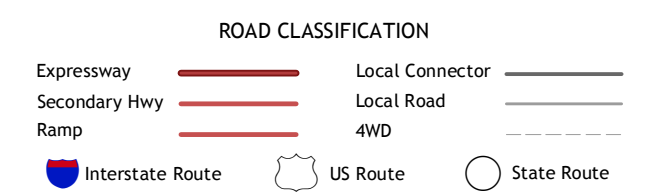
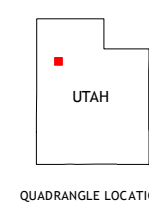
This map is not a legal document. Boundaries may be generalized for this map scale. Private lands within government reservations may not be shown. Obtain permission before entering private lands.

Image... NAD83, October 2014
Roads... U.S. Census Bureau, 2015 - 2016
Names... GNIS, 2016
Hydrography... National Hydrography Dataset, 2014
Contours... National Elevation Dataset, 2002
Boundaries... Multiple sources; see metadata file 1972 - 2016
Public Land Survey System... BLM, 2016
Wetlands... FWS National Wetlands Inventory 1977 - 2014



CONTOUR INTERVAL 20 FEET
NORTH AMERICAN VERTICAL DATUM OF 1988

This map was produced to conform with the
National Geospatial Program US Topo Product Standard, 2011.
A metadata file associated with this product is draft version 0.6.19



1	2	3
4	5	6
7	8	

ADJOINING QUADRANGLES

- 1 Aragonite NW
- 2 Aragonite
- 3 Hastings Pass
- 4 Aragonite SW
- 5 Quincy Spring
- 6 Wig Mountain NW
- 7 Wig Mountain NE
- 8 Tabbys Peak

ARAGONITE SE, UT
2017

