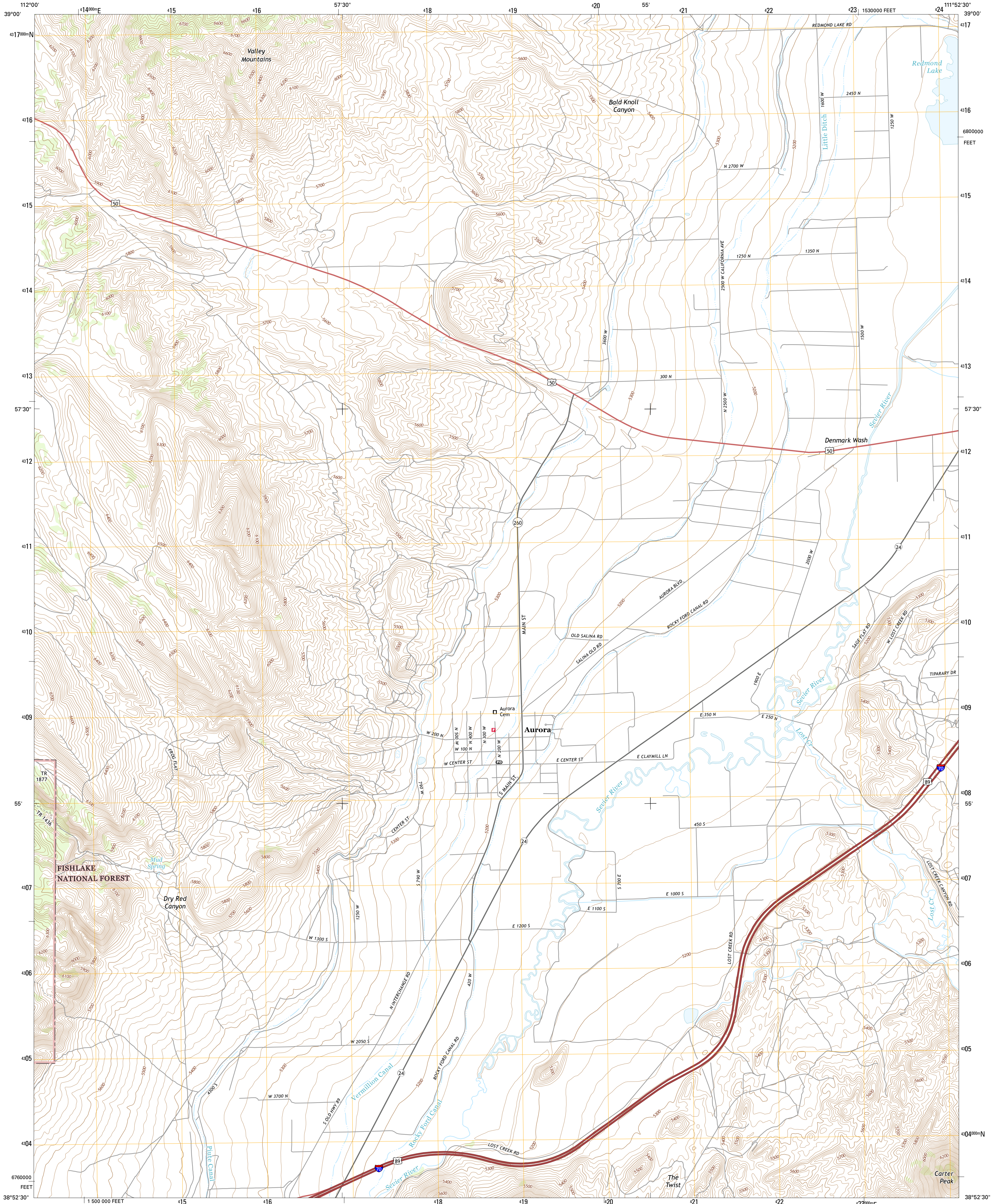




U.S. DEPARTMENT OF THE INTERIOR
U.S. GEOLOGICAL SURVEY



AURORA QUADRANGLE
UTAH-SEVIER CO.
7.5-MINUTE SERIES

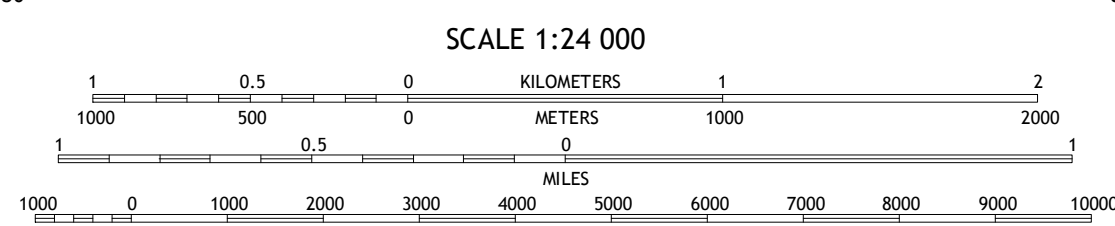
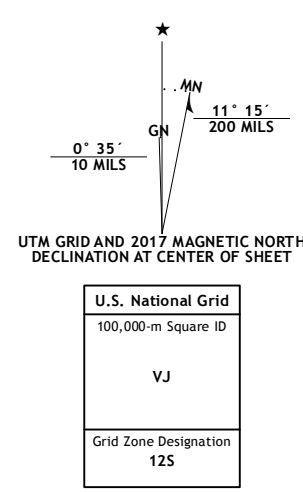


Produced by the United States Geological Survey

North American Datum of 1983 (NAD83)
World Geodetic System of 1984 (WGS84) Projection and
1000-meter grid: Universal Transverse Mercator, Zone 12S
10 000-foot ticks: Utah Coordinate System of 1983 (central zone)

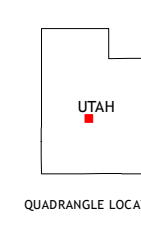
This map is not a legal document. Boundaries may be generalized for this map scale. Private lands within government reservations may not be shown. Obtain permission before entering private lands.

Image: NIP, October 2014
Roads: U.S. Census Bureau, 2015 - 2016
Roads within US Forest Service Lands: FSTopo Data with limited Forest Service updates, 2012 - 2016
Names: GNIS, 2016
Hydrography: National Hydrography Dataset, 2014
Contours: National Elevation Dataset, 2000
Boundaries: Multiple sources; see metadata file 1972 - 2016
Public Land Survey System: BLM, 2016
Wetlands: FWS National Wetlands Inventory 1977 - 2014



SCALE 1:24 000

CONTOUR INTERVAL 20 FEET
NORTH AMERICAN VERTICAL DATUM OF 1988
This map was produced to conform with the National Geospatial Program US Topo Product Standard, 2011. A metadata file associated with this product is draft version 0.6.19



QUADRANGLE LOCATION

ROAD CLASSIFICATION	
Expressway	Local Connector
Secondary Hwy	Local Road
Ramp	4WD
Interstate Route	US Route
FS Primary Route	FS Passenger Route
	FS High Clearance Route

Check with local Forest Service unit for current travel conditions and restrictions.

1	2	3
4	5	6
7	8	

- Scipio Lake
- Redmond Canyon
- Redmond
- Beehive Peak
- Salina
- Richfield
- Signad
- Rex Reservoir

AURORA, UT
2017



NSN 7540-01-000-0000
GSA GEN. REG. NO. 27
U.S. G.S. X 2411881
NGA REF. NO.