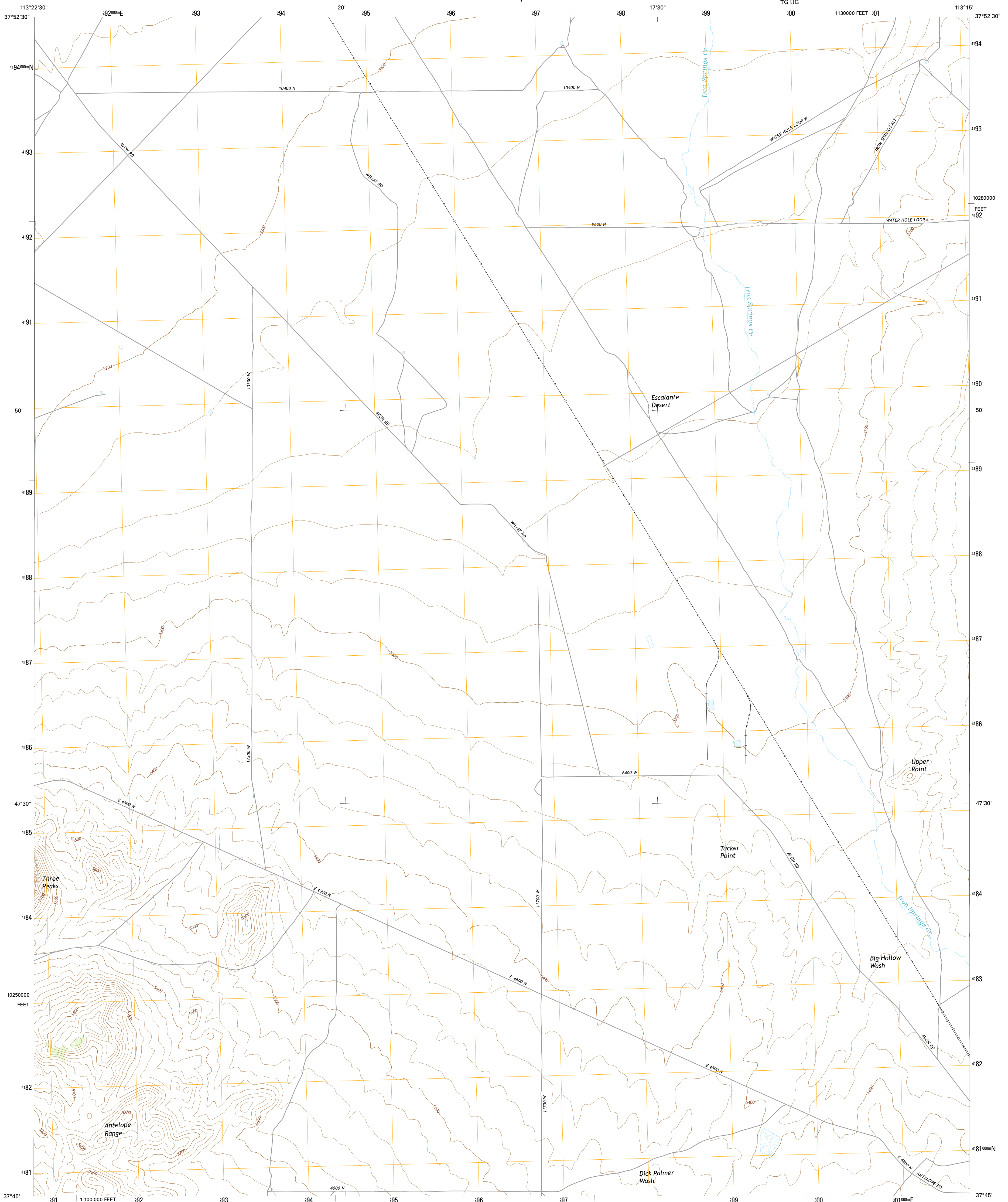




U.S. DEPARTMENT OF THE INTERIOR
U.S. GEOLOGICAL SURVEY



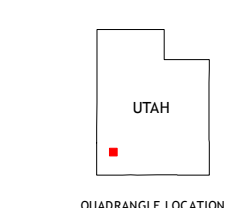
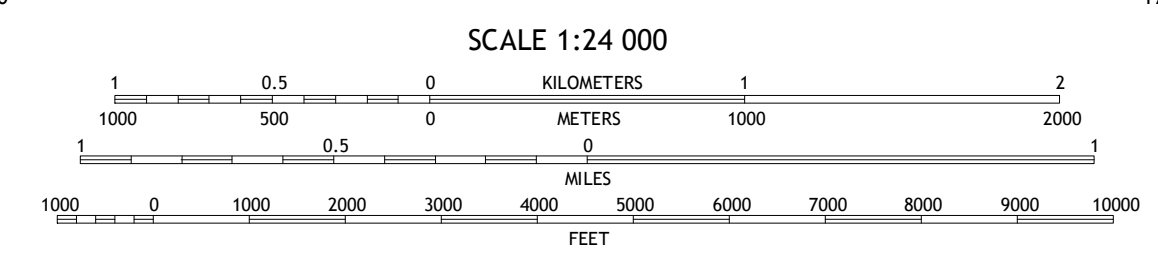
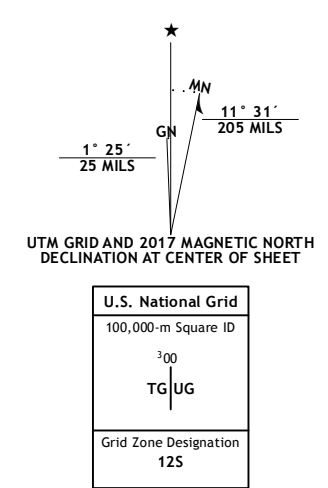
AVON SE QUADRANGLE
UTAH-IRON CO.
7.5-MINUTE SERIES



Produced by the United States Geological Survey
 North American Datum of 1983 (NAD83)
 World Geodetic System of 1984 (WGS84) Projection and
 1 000-meter grid: Universal Transverse Mercator, Zone 12S
 10 000-foot ticks: Utah Coordinate System of 1983 (south zone)

This map is not a legal document. Boundaries may be generalized for this map scale. Private lands within government reservations may not be shown. Obtain permission before entering private lands.

Imagery.....NAIP, October 2014
 Roads.....U.S. Census Bureau, 2015 - 2016
 Names.....GNIS, 2016
 Hydrography.....National Hydrography Dataset, 2014
 Contours.....National Elevation Dataset, 2000
 Boundaries.....Multiple sources; see metadata file 1972 - 2016
 Public Land Survey System.....BLM, 2016
 Wetlands.....FWS National Wetlands Inventory 1977 - 2014



ROAD CLASSIFICATION

	Expressway		Local Connector
	Secondary Hwy		Local Road
	Ramp		4WD
	Interstate Route		US Route
			State Route

ADJOINING QUADRANGLES

1	2	3
4	5	6
7	8	

1 Avon NW
 2 Avon
 3 Ench NW
 4 Antelope Peak
 5 The Three Peaks
 6 Silver Peak
 7 Desert Mound
 8 Cedar City NW

AVON SE, UT
2017

