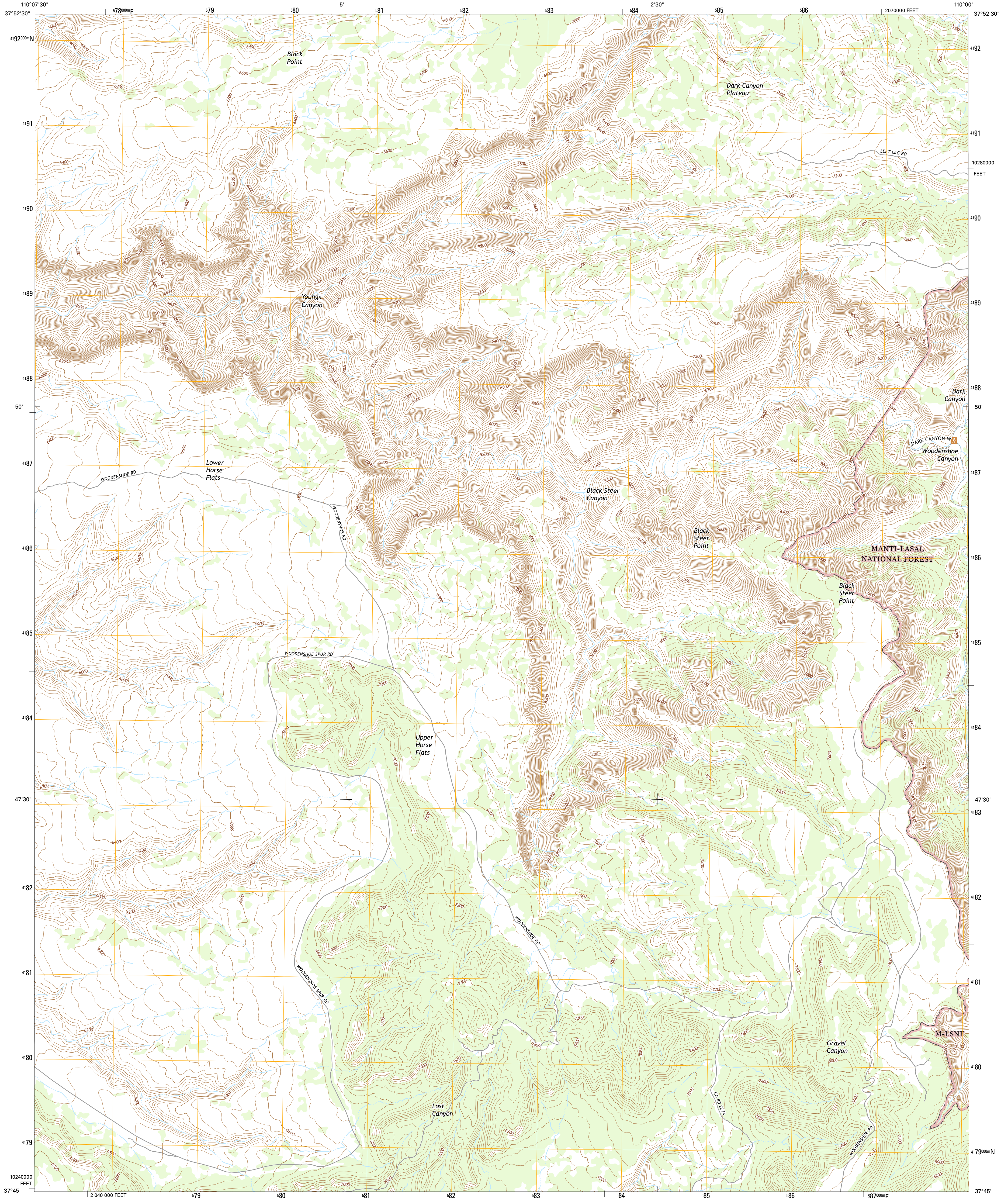




U.S. DEPARTMENT OF THE INTERIOR
U.S. GEOLOGICAL SURVEY



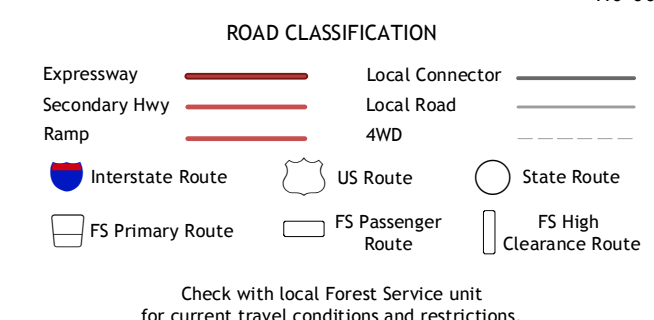
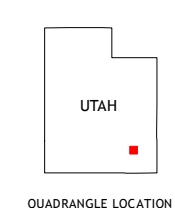
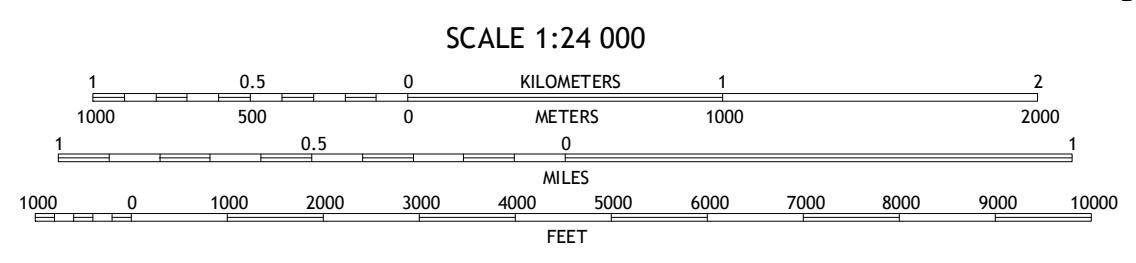
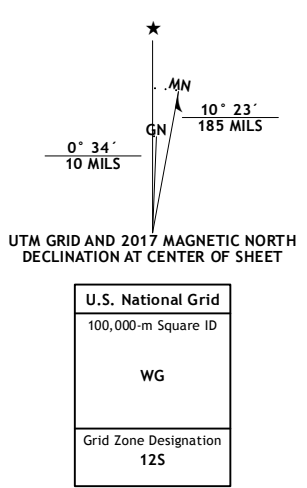
BLACK STEER CANYON QUADRANGLE
UTAH-SAN JUAN CO.
7.5-MINUTE SERIES



Produced by the United States Geological Survey
North American Datum of 1983 (NAD83)
World Geodetic System of 1984 (WGS84) Projection and
1 000-meter grid; Universal Transverse Mercator, Zone 12S
10 000-foot ticks: Utah Coordinate System of 1983 (south zone)

This map is not a legal document. Boundaries may be
generalized for this map scale. Private lands within government
reservations may not be shown. Obtain permission before
entering private lands.

ImageryNAIP, October 2014
RoadsU.S. Census Bureau, 2015 - 2016
Roads within US Forest Service LandsFSTopo Data with limited Forest Service updates, 2012 - 2016
NamesGNIS, 2016
HydrographyNational Hydrography Dataset, 2014
ContoursNational Elevation Dataset, 1999
BoundariesMultiple sources; see metadata file 1972 - 2016
Public Land Survey SystemBLM, 2016
WetlandsFWS National Wetlands Inventory 1977 - 2014



1	2	3	1 Bowdler Canyon West
4	5	2	2 Bowdler Canyon East
6	7	3	3 Fabie Valley
		4	4 Indian Head Canyon
		5	5 Warren Canyon
		6	6 Jacobs Chair
		7	7 The Cheesebox
		8	8 Woodenshoe Buttes

ADJOINING QUADRANGLES

BLACK STEER CANYON, UT
2017

