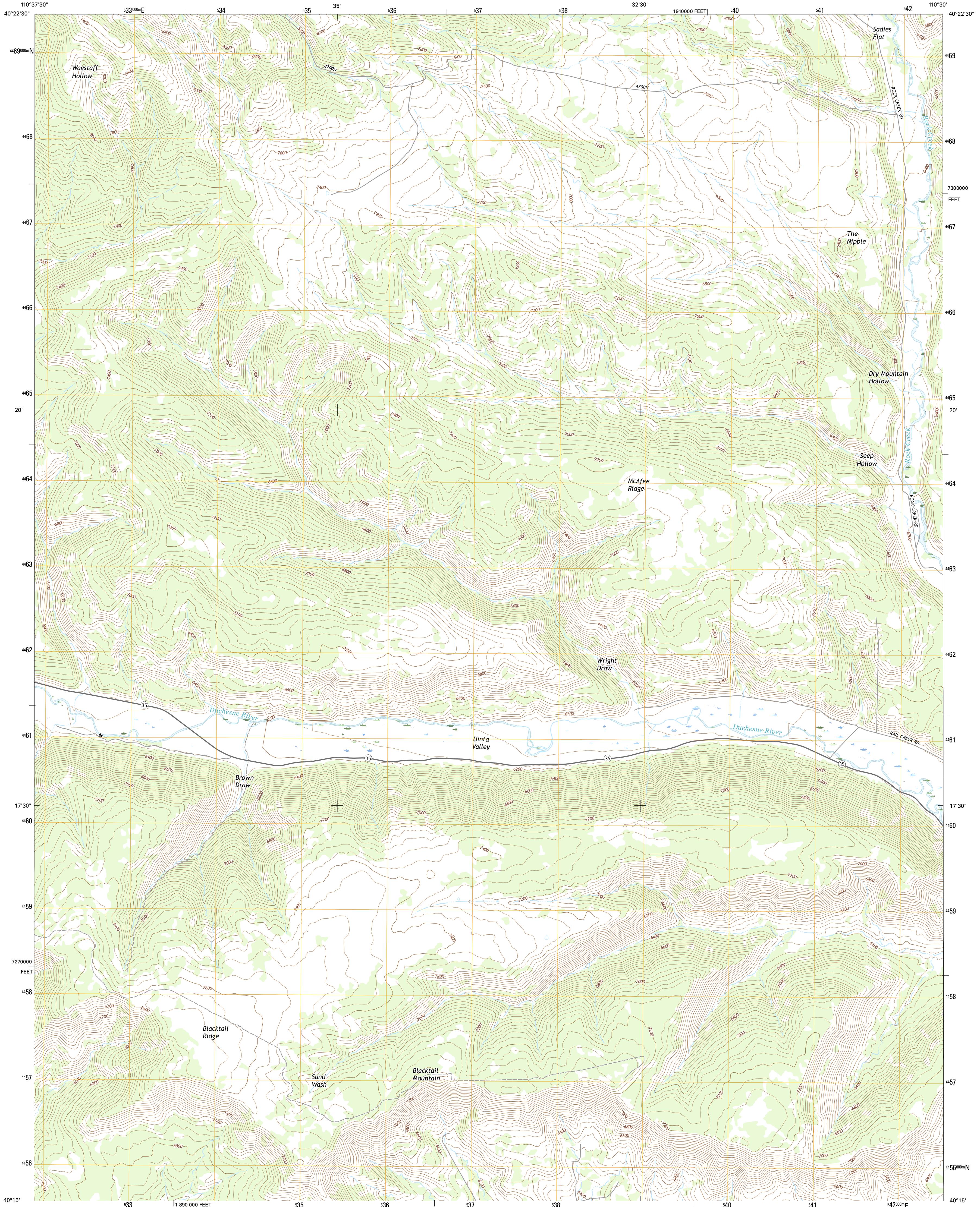




U.S. DEPARTMENT OF THE INTERIOR  
U.S. GEOLOGICAL SURVEY



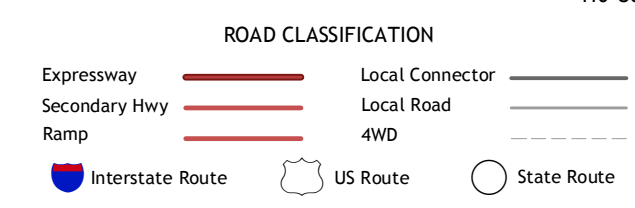
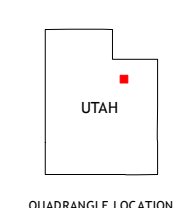
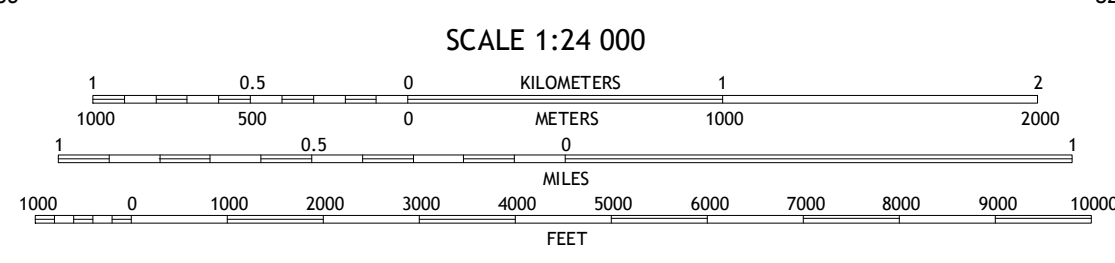
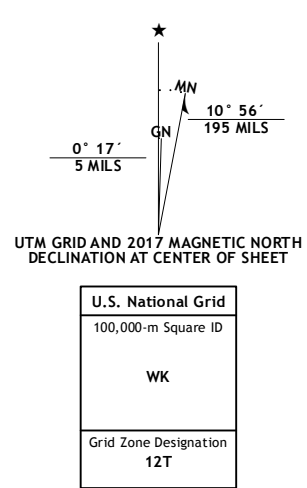
BLACKTAIL MOUNTAIN QUADRANGLE  
UTAH-DUCHESNE CO.  
7.5-MINUTE SERIES



Produced by the United States Geological Survey  
North American Datum of 1983 (NAD83)  
World Geodetic System of 1984 (WGS84) Projection and  
1 000-meter grid: Universal Transverse Mercator, Zone 12T  
10 000-foot ticks: Utah Coordinate System of 1983 (central zone)

This map is not a legal document. Boundaries may be generalized for this map scale. Private lands within government reservations may not be shown. Obtain permission before entering private lands.

Imagery.....NIP, October 2014  
Roads.....U.S. Census Bureau, 2015 - 2016  
Names.....GNIS, 2016  
Hydrography.....National Hydrography Dataset, 2014  
Contours.....National Elevation Dataset, 2000  
Boundaries.....Multiple sources; see metadata file 1972 - 2016  
Public Land Survey System.....BLM, 2016  
Wetlands.....FWS National Wetlands Inventory 1977 - 2014



1	2	3
4	5	6
7	8	

ADJOINING QUADRANGLES

- 1 Farm Creek Peak
- 2 Dry Mountain
- 3 Mountain Home
- 4 Tablona
- 5 Talmage
- 6 Strawberry Pinnacles
- 7 Rabbit Gulch
- 8 Duchesne

BLACKTAIL MOUNTAIN, UT  
2017



NSN 7540-01-000-0000  
USGS REF. NO. U.S.G.S.X 24 2 4 2 6 4