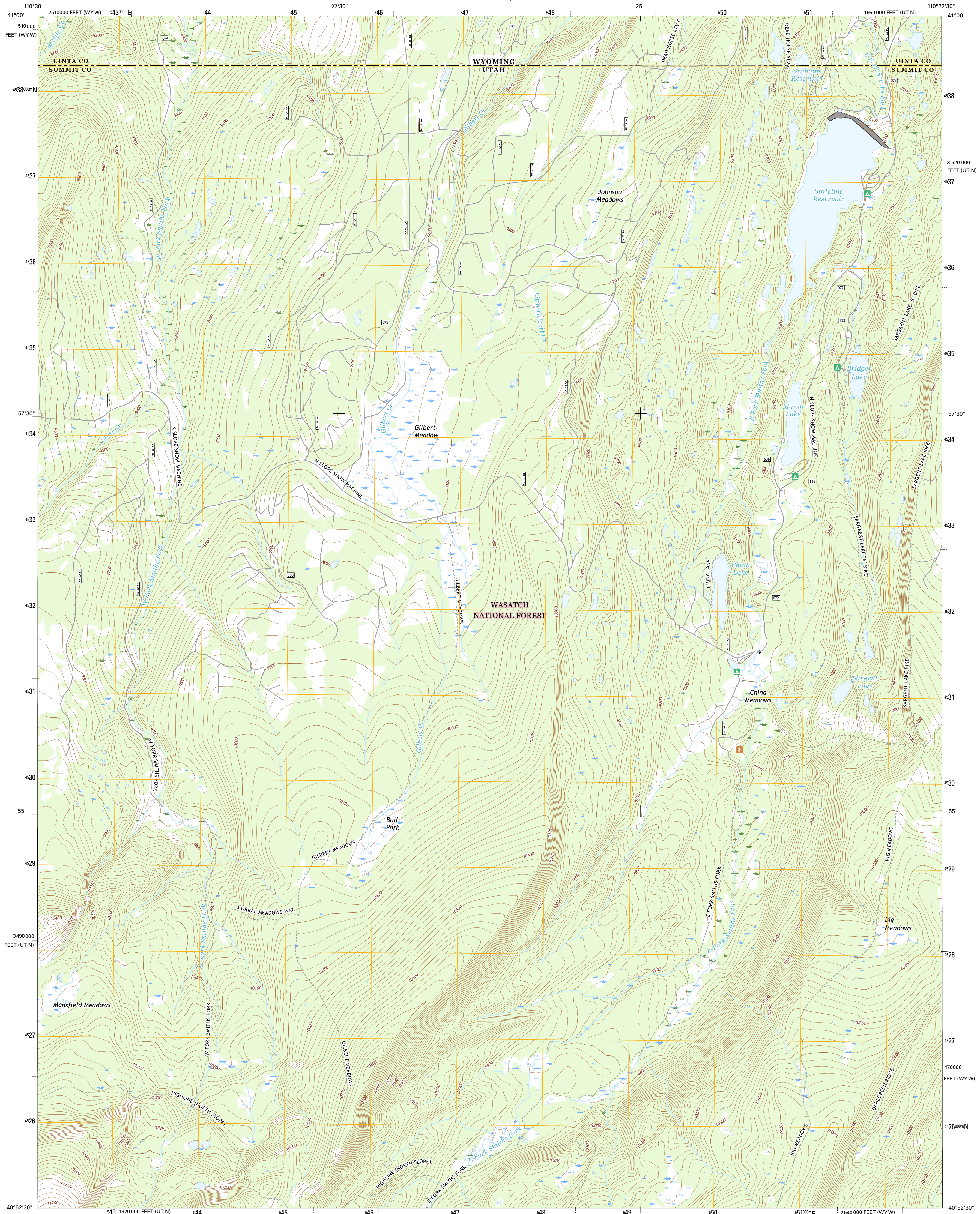




U.S. DEPARTMENT OF THE INTERIOR
U.S. GEOLOGICAL SURVEY



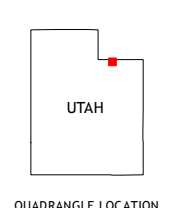
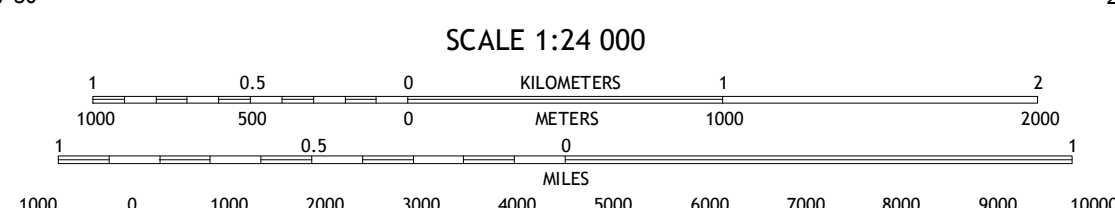
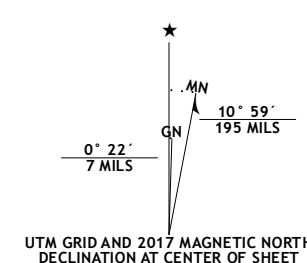
BRIDGER LAKE QUADRANGLE
UTAH-WYOMING
7.5-MINUTE SERIES



Produced by the United States Geological Survey
 North American Datum of 1983 (NAD83)
 World Geodetic System of 1984 (WGS84) Projection and
 1 000-meter grid; Universal Transverse Mercator, Zone 12T
 10 000-foot ticks; Utah Coordinate System of 1983 (north zone),
 Wyoming Coordinate System of 1983 (west zone)

This map is not a legal document. Boundaries may be
 generalized for this map scale. Private lands within government
 reservations may not be shown. Obtain permission before
 entering private lands.

Imagery.....NAIP, October 2014
 Roads.....U.S. Census Bureau, 2015 2016
 Roads within US Forest Service Lands.....FSTopo Data
 with limited Forest Service updates, 2012 - 2016
 Names.....National Hydrography Dataset, 2014
 Hydrography.....National Hydrography Dataset, 2014
 Contours.....National Elevation Dataset, 2001
 Boundaries.....Multiple sources; see metadata file 1972 - 2016
 Public Land Survey System.....BLM, 2015 - 2016
 Wetlands.....FWS National Wetlands Inventory 1977 - 2014



ROAD CLASSIFICATION

Expressway	Local Connector
Secondary Hwy	Local Road
Ramp	4WD
Interstate Route	US Route
FS Primary Route	FS Passenger Route
	State Route
	FS High Clearance Route

ADJOINING QUADRANGLES

1	2	3
4	5	6
7	8	

1 Meeks Cabin Reservoir
 2 Buck Fever Ridge
 3 Table Mountain
 4 Lyman Lake
 5 Gilbert Peak NE
 6 Mount Lovell
 7 Mount Powell
 8 Kings Peak

Check with local Forest Service unit
for current travel conditions and restrictions.

BRIDGER LAKE, UT-WY
2017

