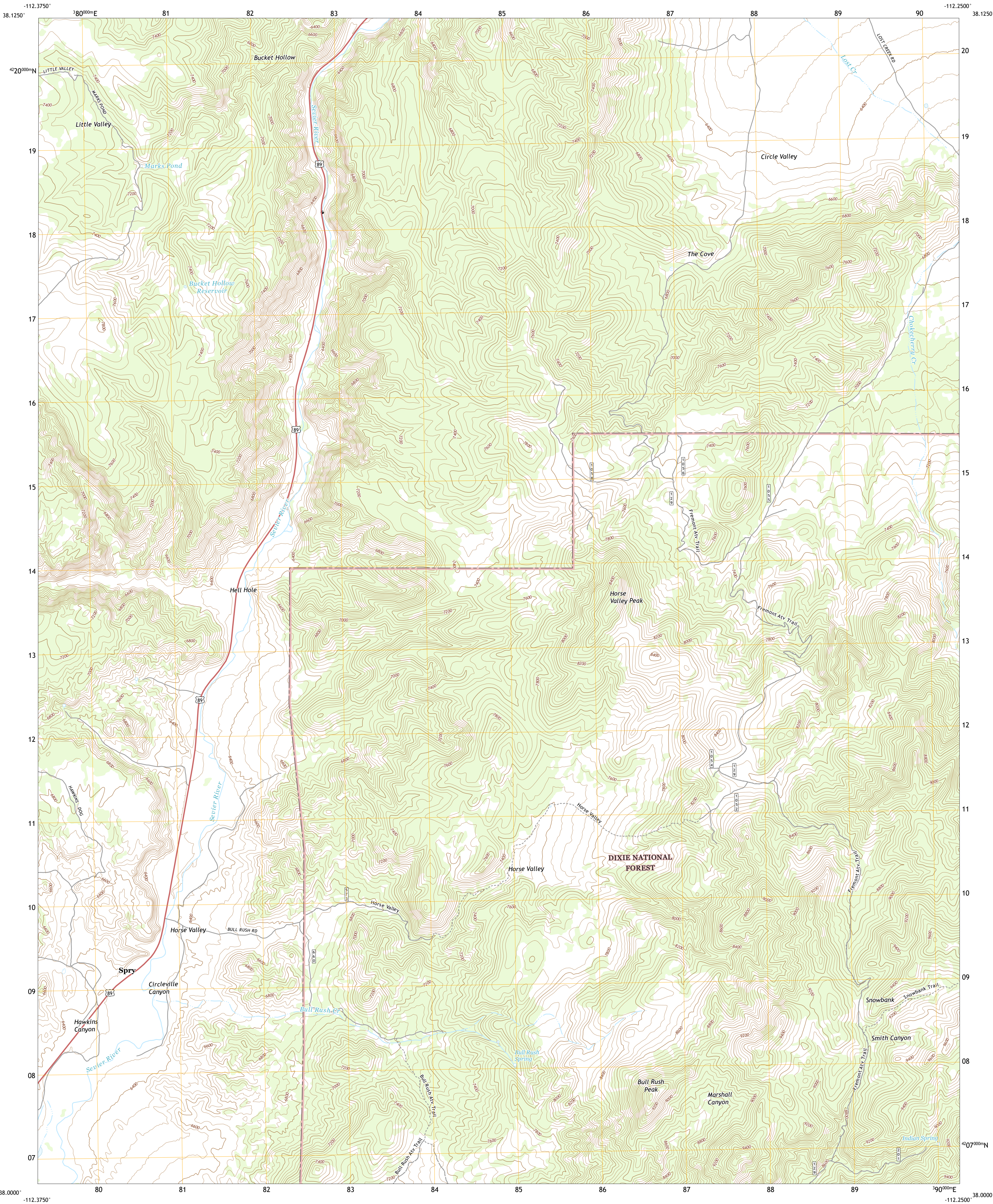




U.S. DEPARTMENT OF THE INTERIOR
U.S. GEOLOGICAL SURVEY

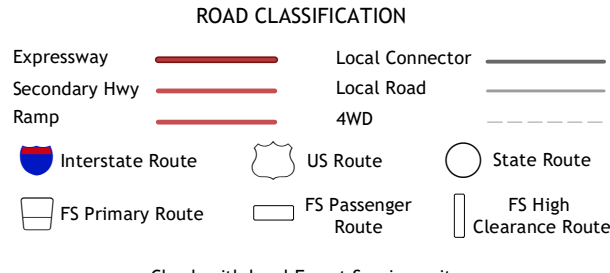
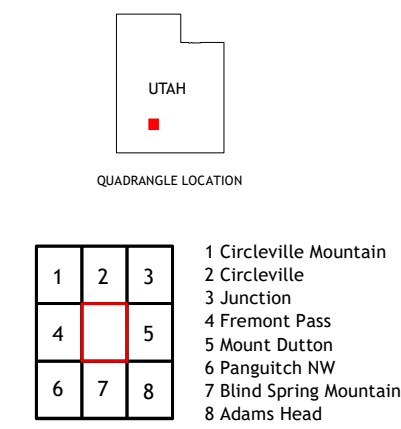
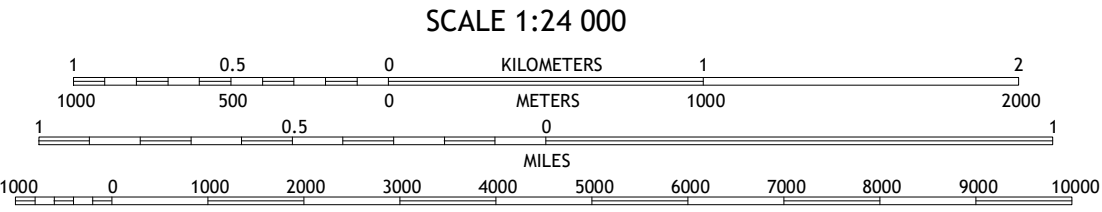
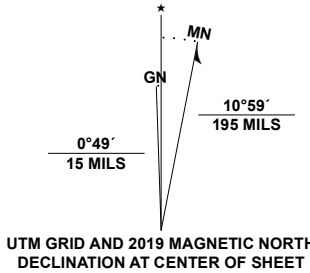


BULL RUSH PEAK QUADRANGLE
UTAH - GARFIELD COUNTY
7.5-MINUTE SERIES



Produced by the United States Geological Survey
North American Datum of 1983 (NAD83)
World Geodetic System of 1984 (WGS84). Projection and
1 000-meter grid: Universal Transverse Mercator, Zone 12S
This map is not a legal document. Boundaries may be
generalized for this map scale. Private lands within government
reservations may not be shown. Obtain permission before
entering private lands.

Imagery.....N.A.P., July 2016 - October 2016
Roads.....U.S. Census Bureau, 2016
Data with limited Forest Service updates, 2013 - 2016
Names.....G.N.S., 1979 - 2019
Hydrography.....National Hydrography Dataset, 2002
Contours.....National Elevation Dataset, 2000
Boundaries.....Multiple sources: see metadata file 2017
Public Land Survey System.....BLM, 2019
Wetlands.....FWS National Wetlands Inventory Not Available



BULL RUSH PEAK, UT
2020

