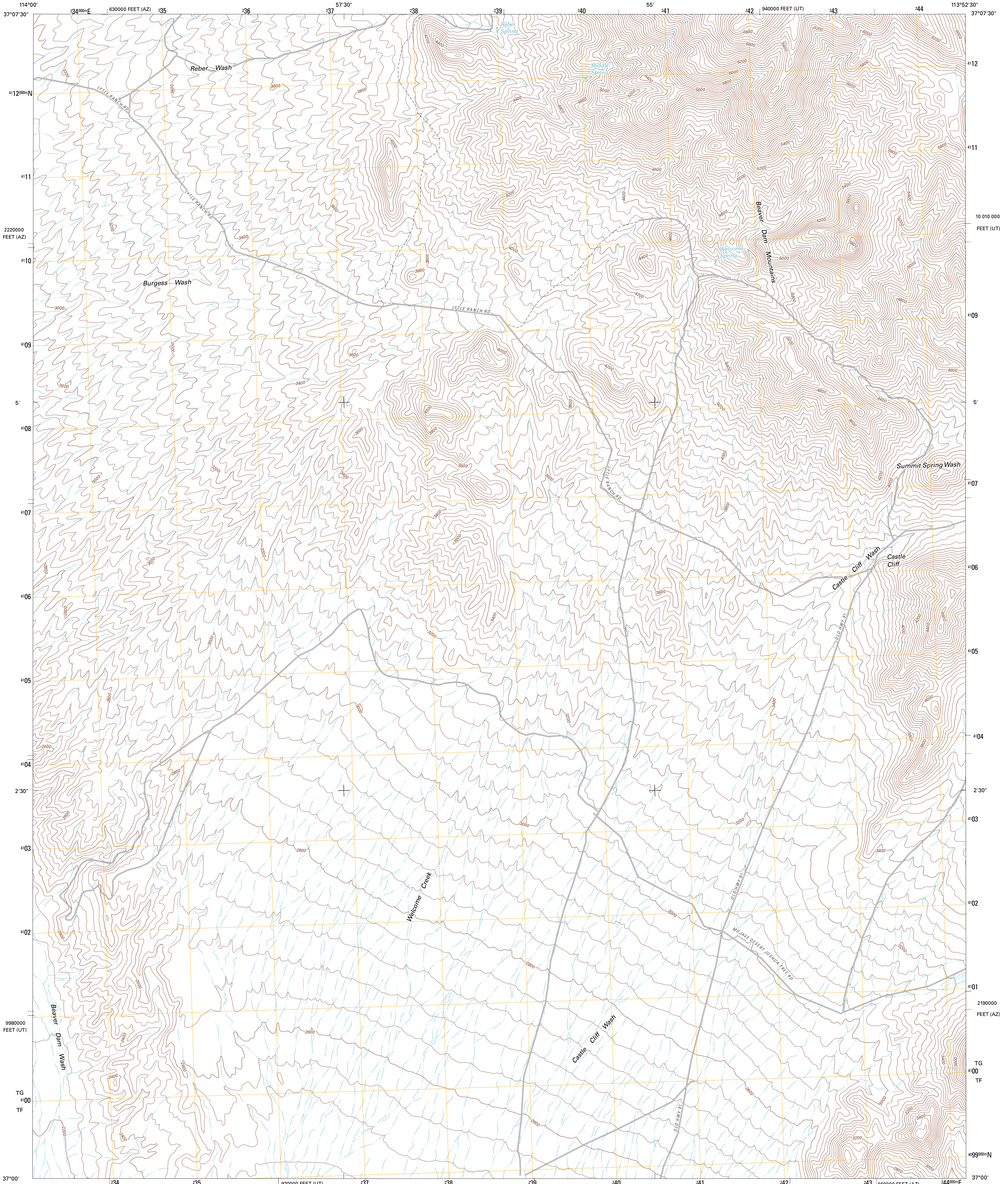




U.S. DEPARTMENT OF THE INTERIOR  
U. S. GEOLOGICAL SURVEY

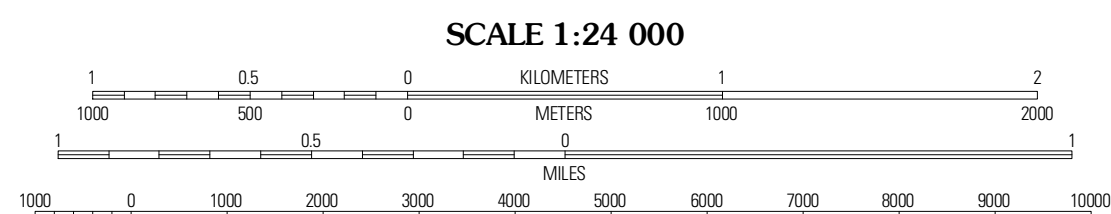
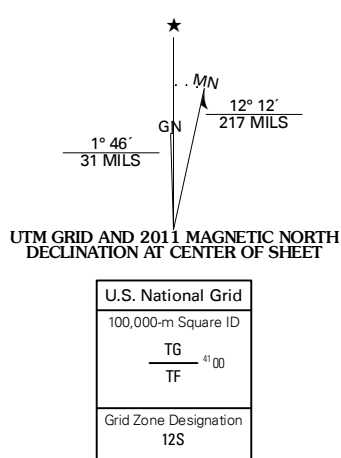


CASTLE CLIFF QUADRANGLE  
UTAH-ARIZONA  
7.5-MINUTE SERIES



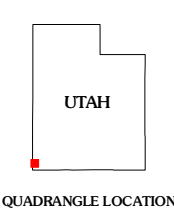
Produced by the United States Geological Survey  
North American Datum of 1983 (NAD83)  
World Geodetic System of 1984 (WGS84). Projection and  
1 000-meter grid: Universal Transverse Mercator, Zone 12S  
10 000-foot ticks: Utah Coordinate System of 1983 (south  
zone), Arizona Coordinate System of 1983 (west zone)

Imagery.....NIP, July 2009  
Roads.....©2006-2010 Tele Atlas  
Names.....GNIS, 2010  
Hydrography.....National Hydrography Dataset, 2009  
Contours.....National Elevation Dataset, 2003

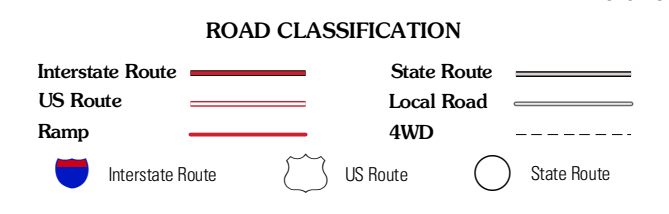


CONTOUR INTERVAL 40 FEET  
NORTH AMERICAN VERTICAL DATUM OF 1988

This map was produced to conform with version 0.5.10 of the  
draft USGS Standards for 7.5-Minute Quadrangle Maps.  
A metadata file associated with this product is draft version 0.5.11



Scarecrow Peak	West Mountain Peak	Shiwits
Terry Benches	Castle Cliff	Jarvis Peak
Mesquite NE	Littlefield	Mountain Sheep Spring



CASTLE CLIFF, UT-AZ  
2011

ADJOINING 7.5' QUADRANGLES