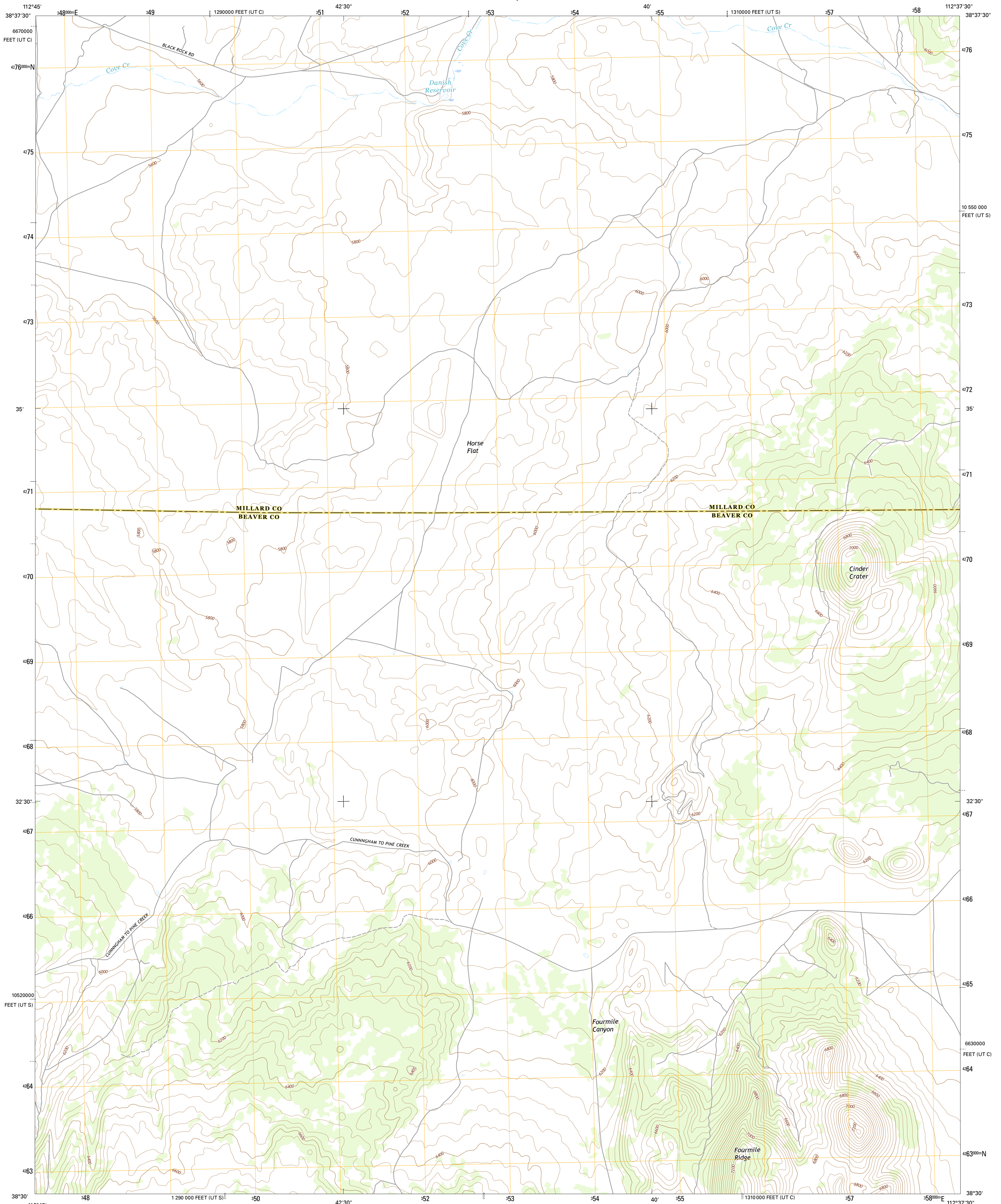




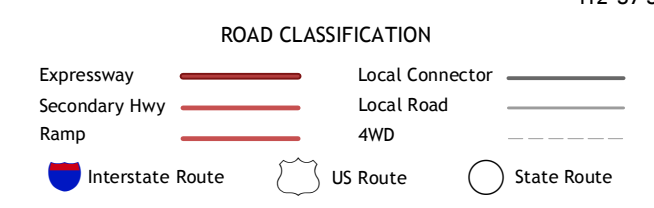
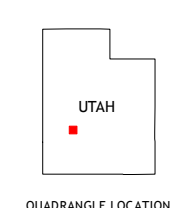
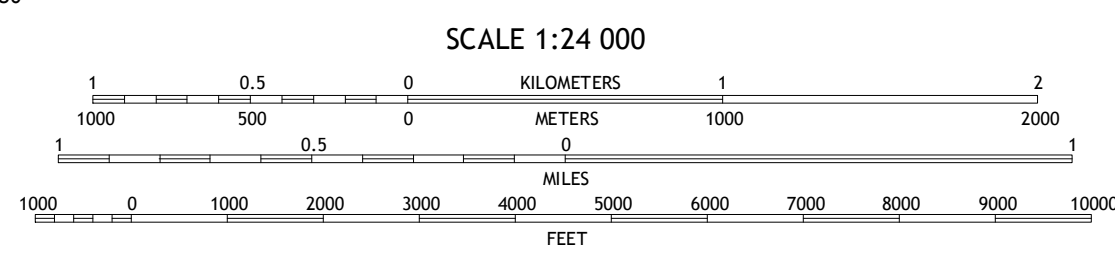
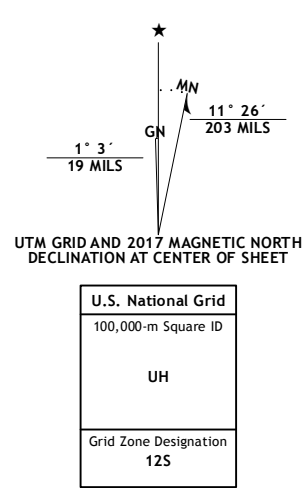
U.S. DEPARTMENT OF THE INTERIOR  
U.S. GEOLOGICAL SURVEY



CINDER CRATER QUADRANGLE  
UTAH  
7.5-MINUTE SERIES



**Produced by the United States Geological Survey**  
 North American Datum of 1983 (NAD83)  
 World Geodetic System of 1984 (WGS84). Projection and  
 1000-meter grid: Universal Transverse Mercator, Zone 12S  
 10 000-foot ticks: Utah Coordinate System of 1983 (south and  
 central zones)  
 This map is not a legal document. Boundaries may be  
 generalized for this map scale. Private lands within government  
 reservations may not be shown. Obtain permission before  
 entering private lands.  
 Imagery.....NAIP, October 2014  
 Roads.....U.S. Census Bureau, 2015 - 2016  
 Names.....GNIS, 2016  
 Hydrography.....National Hydrography Dataset, 2014  
 Contours.....National Elevation Dataset, 2000  
 Boundaries.....Multiple sources; see metadata file 1972\_2016  
 Public Land Survey System.....BLM, 2016  
 Wetlands.....FWS National Wetlands Inventory 1977 - 2014



1	2	3
4	5	6
7	8	

ADJOINING QUADRANGLES

1 Antelope Spring  
2 Antelope Valley  
3 Dog Valley Peak  
4 Pinnacle Pass  
5 Cove Pass  
6 Bearskin Mountain  
7 Gilles Hill  
8 Pole Mountain

**CINDER CRATER, UT**  
2017

