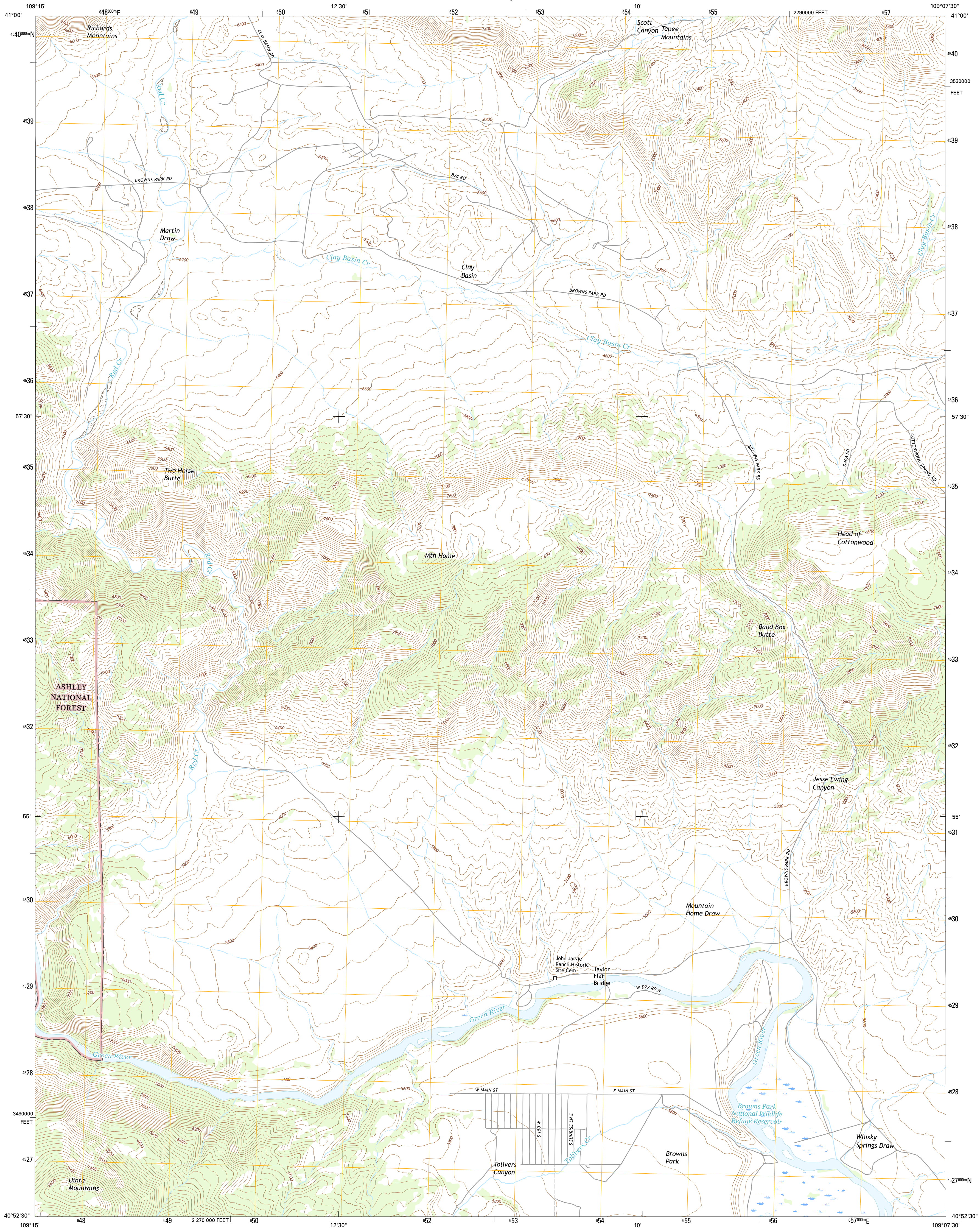




U.S. DEPARTMENT OF THE INTERIOR
U.S. GEOLOGICAL SURVEY



CLAY BASIN QUADRANGLE
UTAH-DAGGETT CO.
7.5-MINUTE SERIES

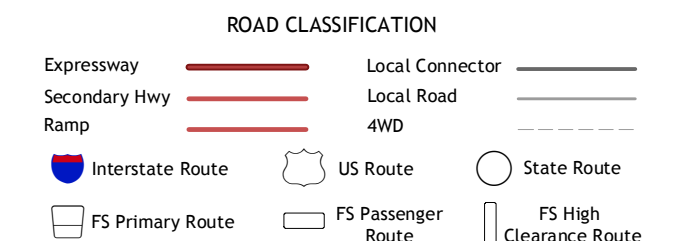
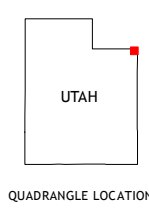
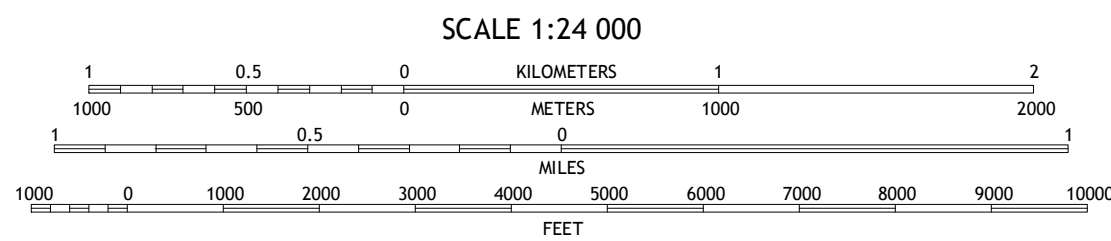
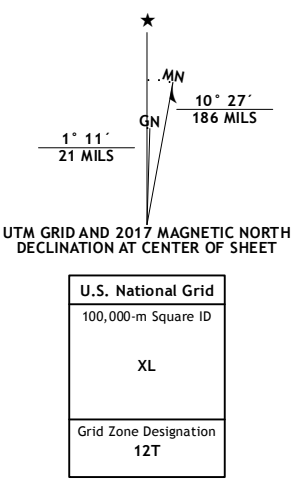


Produced by the United States Geological Survey

North American Datum of 1983 (NAD83)
World Geodetic System of 1984 (WGS84). Projection and
1 000-meter grid: Universal Transverse Mercator, Zone 12T
10 000-foot ticks: Utah Coordinate System of 1983 (north zone)

This map is not a legal document. Boundaries may be
generalized for this map scale. Private lands within government
reservations may not be shown. Obtain permission before
entering private lands.

Imagery.....N.A.I.P. October 2014
Roads.....U.S. Census Bureau, 2015 2016
Roads within US Forest Service Lands.....USFS Data
with limited Forest Service updates, 2012-2016
Names.....National Hydrography Dataset, 2014
Hydrography.....National Hydrography Dataset, 2014
Contours.....National Elevation Dataset, 2003
Boundaries.....Multiple sources; see metadata file 1972-2016
Public Land Survey System.....BLM, 2016
Wetlands.....FWS National Wetlands Inventory 1977-2014



ADJOINING QUADRANGLES

| | | |
|---|---|---|
| 1 | 2 | 3 |
| 4 | 5 | 6 |
| 7 | 8 | |

1 Hawks Nest
2 Richards Gap
3 Reed Creek Ranch
4 Goslin Mountain
5 Willow Creek Butte
6 Jackson Draw
7 Warren Draw
8 Swallow Canyon

Check with local Forest Service unit
for current travel conditions and restrictions.

CLAY BASIN, UT
2017

