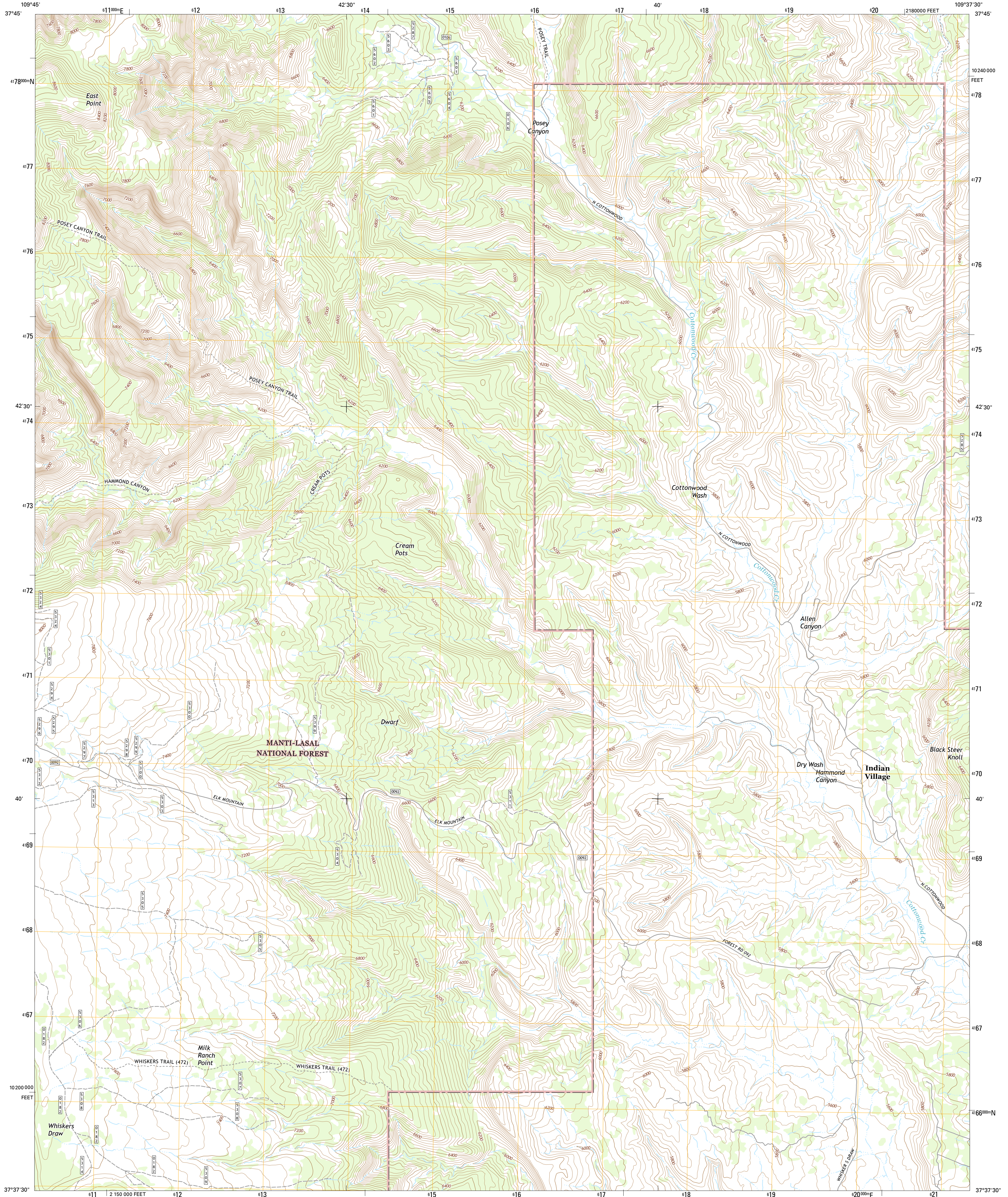




U.S. DEPARTMENT OF THE INTERIOR
U.S. GEOLOGICAL SURVEY



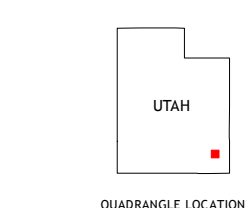
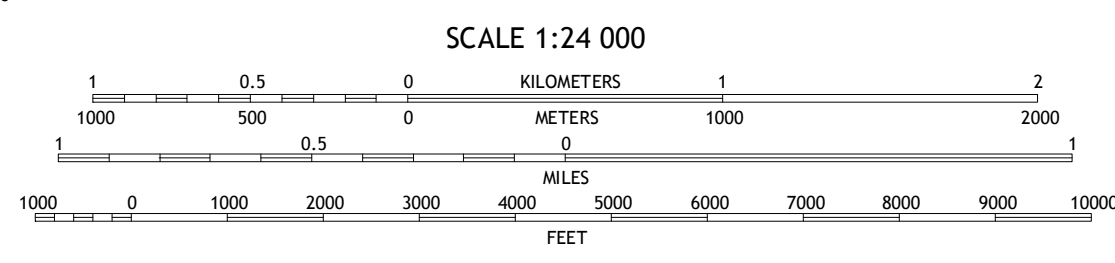
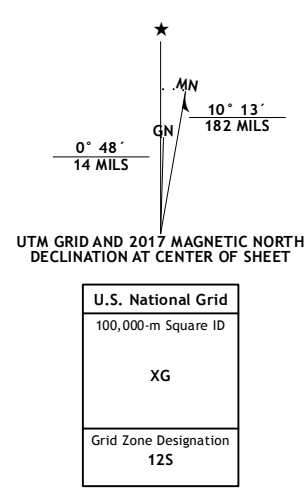
CREAM POTS QUADRANGLE
UTAH-SAN JUAN CO.
7.5-MINUTE SERIES



Produced by the United States Geological Survey
North American Datum of 1983 (NAD83)
World Geodetic System of 1984 (WGS84), Projection and 1000-meter grid: Universal Transverse Mercator, Zone 12S
10 000-foot ticks: Utah Coordinate System of 1983 (south zone)

This map is not a legal document. Boundaries may be generalized for this map scale. Private lands within government reservations may not be shown. Obtain permission before entering private lands.

Imagery: NIP, October 2014
Roads: U.S. Census Bureau, 2015 - 2016
Roads within US Forest Service Lands: FSTopo Data with limited Forest Service updates, 2012 - 2016
Names: GNIS, 2016
Hydrography: National Hydrography Dataset, 2014
Contours: National Elevation Dataset, 1999
Boundaries: Multiple sources; see metadata file 1972 - 2016
Public Land Survey System: BLM, 2016
Wetlands: FWS National Wetlands Inventory 1977 - 2014



ROAD CLASSIFICATION

| | |
|------------------|-------------------------|
| Expressway | Local Connector |
| Secondary Hwy | Local Road |
| Ramp | 4WD |
| Interstate Route | US Route |
| FS Primary Route | FS Passenger Route |
| | FS High Clearance Route |

Check with local Forest Service unit for current travel conditions and restrictions.

| | | | |
|---|---|---|--------------------|
| 1 | 2 | 3 | 1 Poison Canyon |
| 4 | 5 | 6 | 2 Chippean Rocks |
| 7 | 8 | 7 | 3 Mount Linnaeus |
| | | 8 | 4 Kigalia Point |
| | | | 5 Mancos Jim Butte |
| | | | 6 South Long Point |
| | | | 7 Hotel Rock |
| | | | 8 Black Mesa Butte |

ADJOINING QUADRANGLES

CREAM POTS, UT
2017

