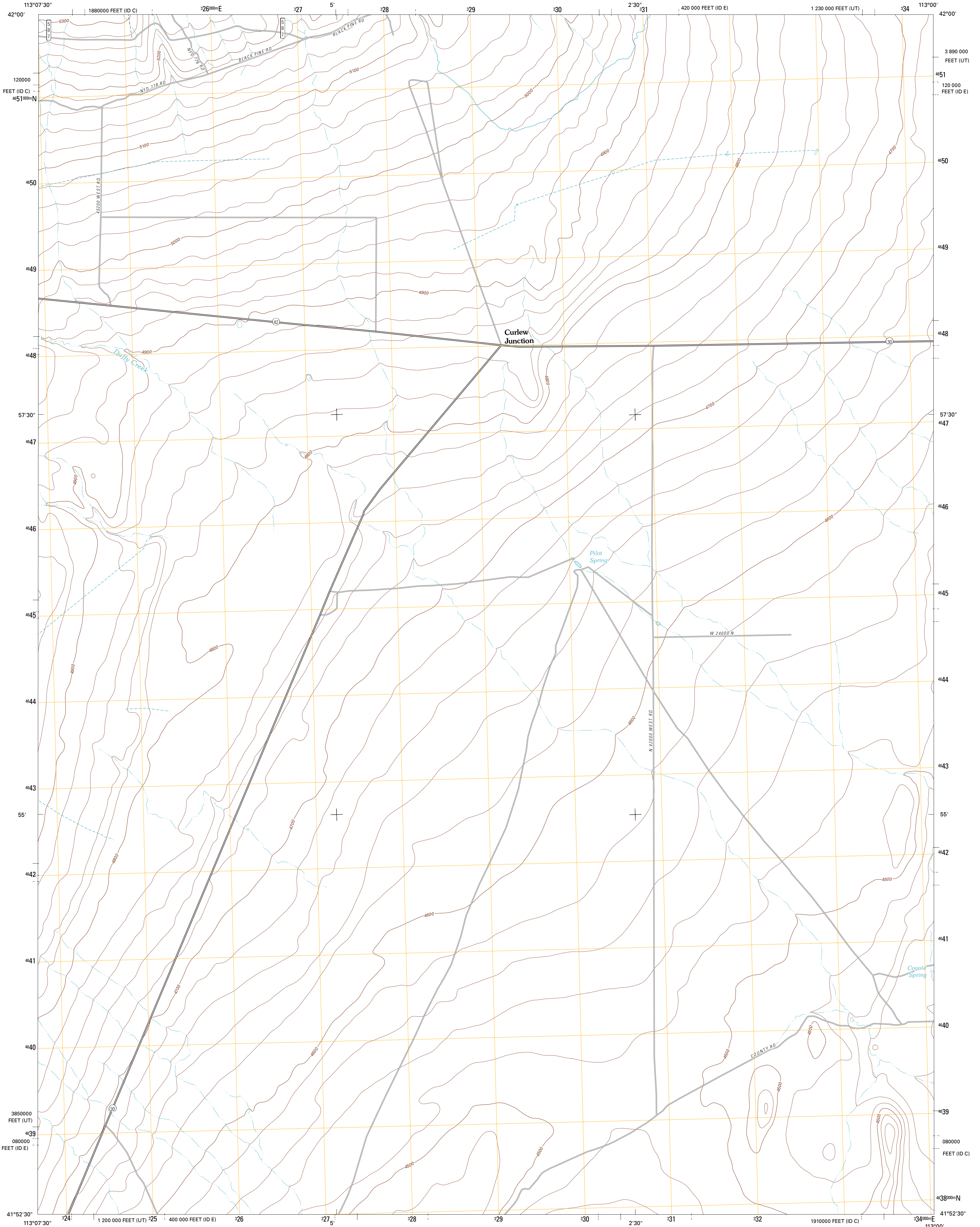




U.S. DEPARTMENT OF THE INTERIOR
U. S. GEOLOGICAL SURVEY

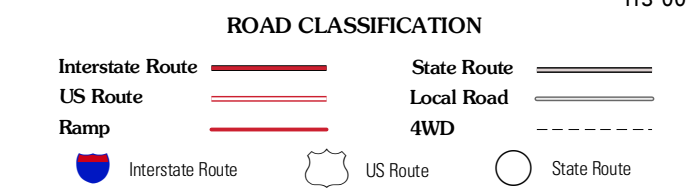
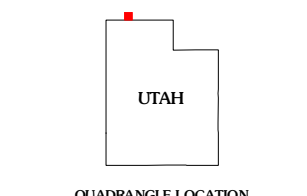
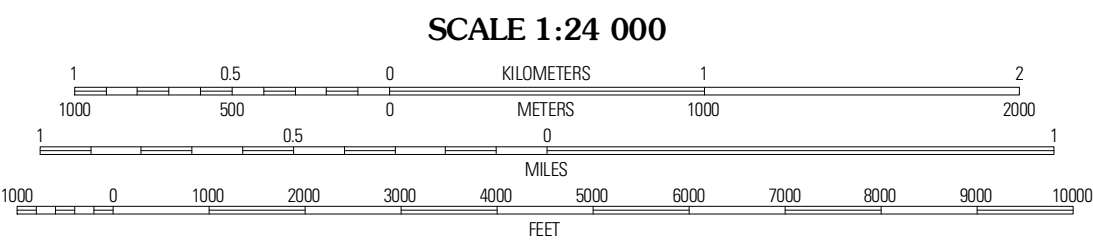
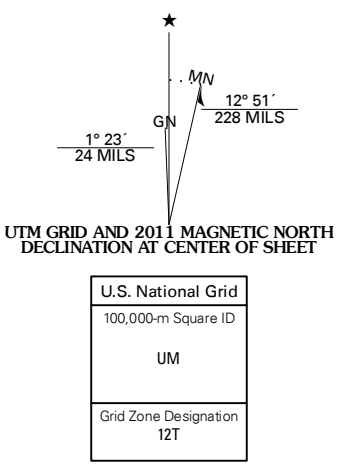


CURLEW JUNCTION QUADRANGLE
UTAH-IDAHO
7.5-MINUTE SERIES



Produced by the United States Geological Survey
North American Datum of 1983 (NAD83)
World Geodetic System of 1984 (WGS84). Projection and
1 000-meter grid: Universal Transverse Mercator, Zone 12T
10 000-foot ticks: Utah Coordinate System of 1983 (north
zone), Idaho Coordinate System of 1983 (central and east
zones)

Imagery.....NAIP, June 2009
Roads.....©2006-2010 Tele Atlas
Names.....GNS, 2010
Hydrography.....National Hydrography Dataset, 2009
Contours.....National Elevation Dataset, 2002



Strevell	Black Pine Peak	Black Pine
Kelton Pass	Curlew Junction	Monument Peak NW
Black Butte	Kelton Pass SE	Monument Peak SW

CONTOUR INTERVAL 20 FEET
NORTH AMERICAN VERTICAL DATUM OF 1988

This map was produced to conform with version 0.5.10 of the
draft USGS Standards for 7.5-Minute Quadrangle Maps.
A metadata file associated with this product is draft version 0.5.11

CURLEW JUNCTION, UT-ID
2011

ADJOINING 7.5 QUADRANGLES