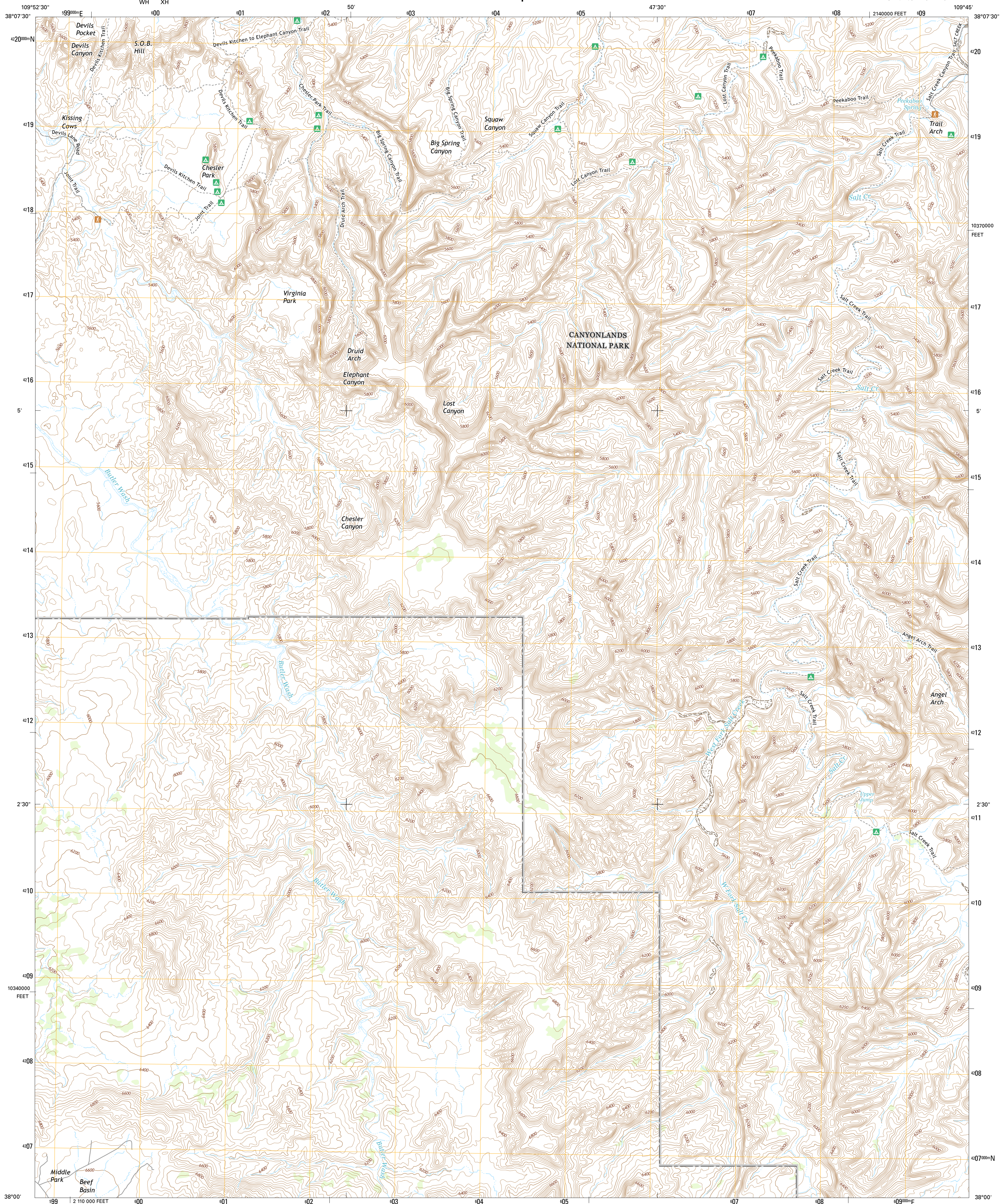




U.S. DEPARTMENT OF THE INTERIOR  
U.S. GEOLOGICAL SURVEY



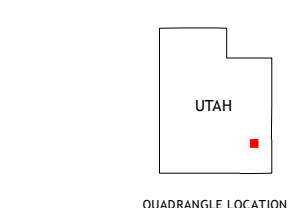
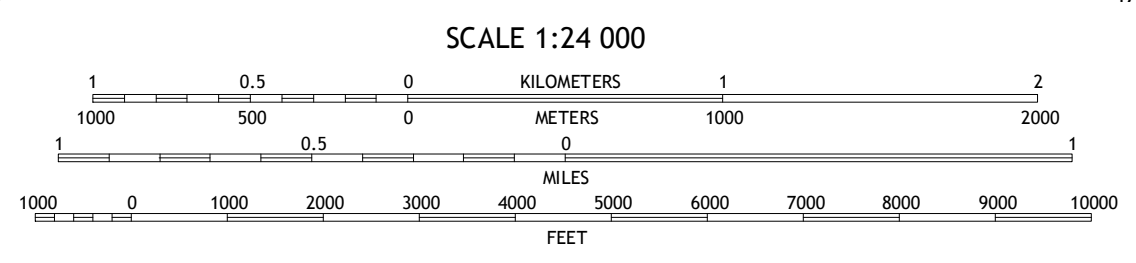
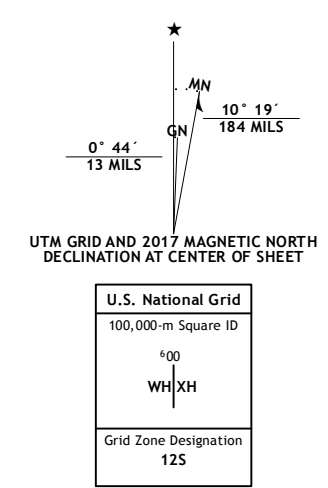
DRUID ARCH QUADRANGLE  
UTAH-SAN JUAN CO.  
7.5-MINUTE SERIES



Produced by the United States Geological Survey  
North American Datum of 1983 (NAD83)  
World Geodetic System of 1984 (WGS84). Projection and  
1 000-foot ticks: Utah Coordinate System of 1983 (south zone)

This map is not a legal document. Boundaries may be  
generalized for this map scale. Private lands within government  
reservations may not be shown. Obtain permission before  
entering private lands.

Imagery	.....	N.A.I.P.	October	2014
Roads	.....	U.S. Census Bureau	2015	2016
Names	.....	.....	GNIS	2016
Hydrography	.....	National Hydrography Dataset	2014	
Contours	.....	National Elevation Dataset	1999	
Boundaries	.....	Multiple sources; see metadata file	1972	2016
Public Land Survey System	.....	BLM	2016	
Wetlands	.....	FWS National Wetlands Inventory	1977	2014



ROAD CLASSIFICATION

Expressway	Local Connector
Secondary Hwy	Local Road
Ramp	4WD
Interstate Route	US Route
	State Route

ADJOINING QUADRANGLES

1	2	3
4	5	6
7	8	

1 Spanish Bottom  
2 The Loop  
3 North Six-shooter Peak  
4 Cross Canyon  
5 South Six-shooter Peak  
6 Fable Valley  
7 House Park Butte  
8 Cathedral Butte

DRUID ARCH, UT  
2017

