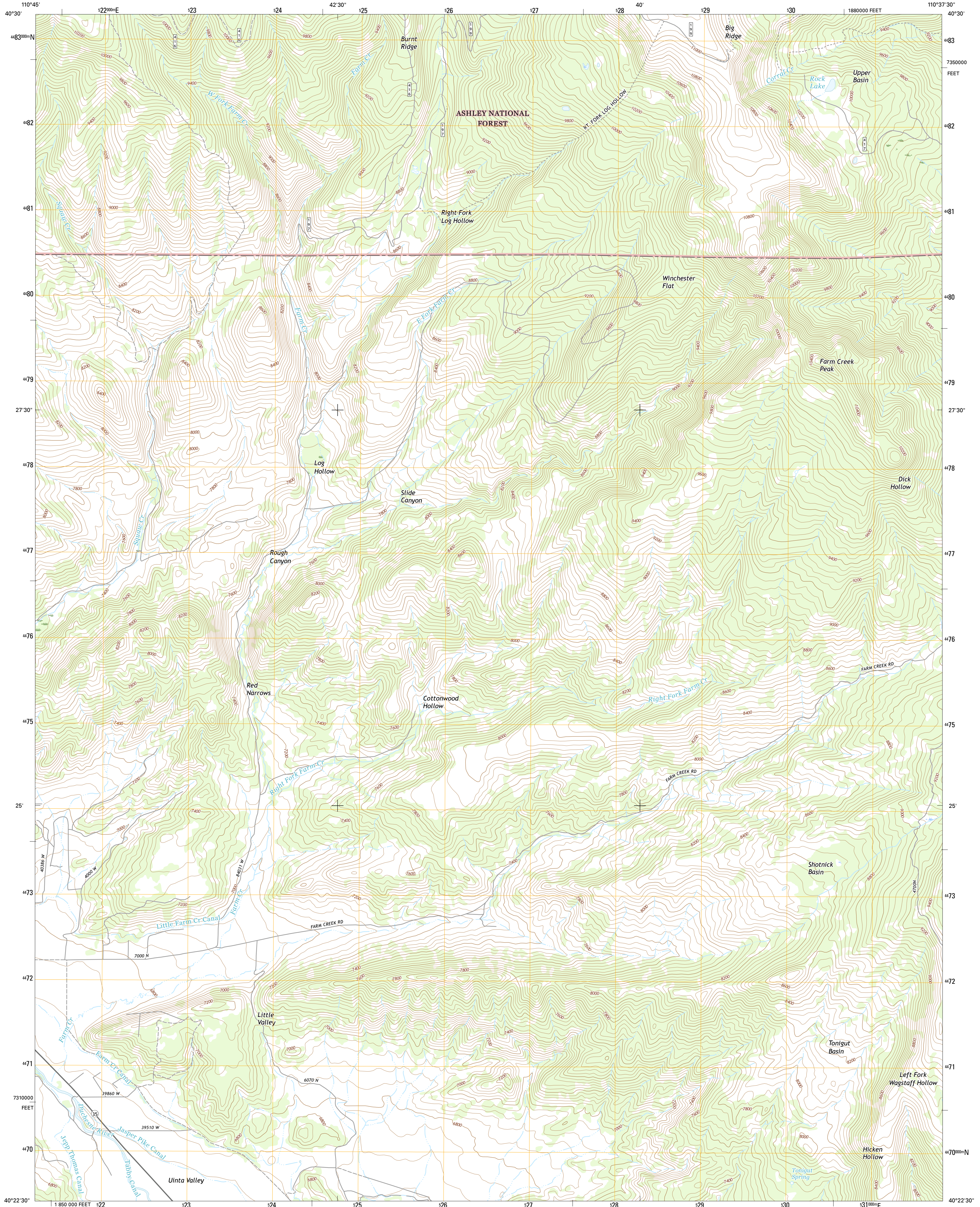




U.S. DEPARTMENT OF THE INTERIOR  
U.S. GEOLOGICAL SURVEY



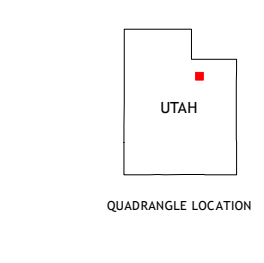
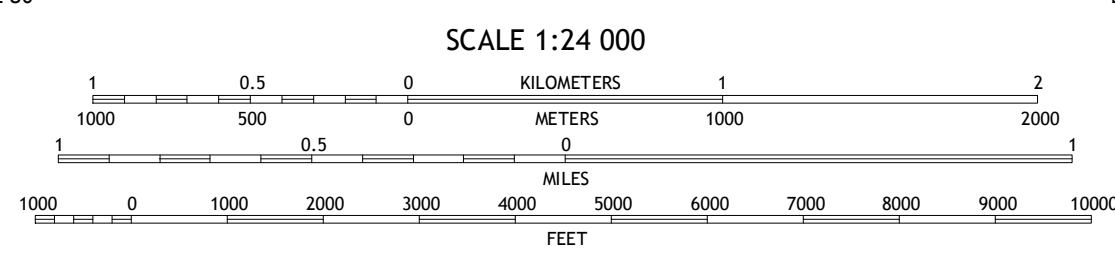
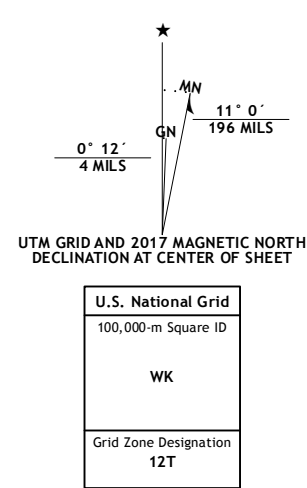
FARM CREEK PEAK QUADRANGLE  
UTAH-DUCHESNE CO.  
7.5-MINUTE SERIES



Produced by the United States Geological Survey  
North American Datum of 1983 (NAD83)  
World Geodetic System of 1984 (WGS84) Projection and  
1 000-meter grid: Universal Transverse Mercator, Zone 12T  
10 000-foot ticks: Utah Coordinate System of 1983 (central zone)

This map is not a legal document. Boundaries may be generalized for this map scale. Private lands within government reservations may not be shown. Obtain permission before entering private lands.

Imagery:.....NAIP, October 2014  
Roads:.....U.S. Census Bureau, 2015 - 2016  
Roads within US Forest Service Lands:.....FSTopo Data with limited Forest Service updates, 2012 - 2016  
Names:.....National Hydrography Dataset, 2014  
Hydrography:.....National Hydrography Dataset, 2014  
Contours:.....National Elevation Dataset, 2002  
Boundaries:.....Multiple sources; see metadata file 1972 - 2016  
Public Land Survey System:.....BLM, 2016  
Wetlands:.....FWS National Wetlands Inventory 1977 - 2014



ROAD CLASSIFICATION

Expressway	Local Connector
Secondary Hwy	Local Road
Ramp	4WD
Interstate Route	US Route
FS Primary Route	FS Passenger Route
	FS High Clearance Route
	State Route

Check with local Forest Service unit for current travel conditions and restrictions.

1	2	3
4	5	6
7	8	

ADJOINING QUADRANGLES

- 1 Granddaddy Lake
- 2 Tworose Pass
- 3 Kidney Lake
- 4 Hanna
- 5 Dry Mountain
- 6 Tabby Mountain
- 7 Tabiona
- 8 Blacktail Mountain

FARM CREEK PEAK, UT  
2017

