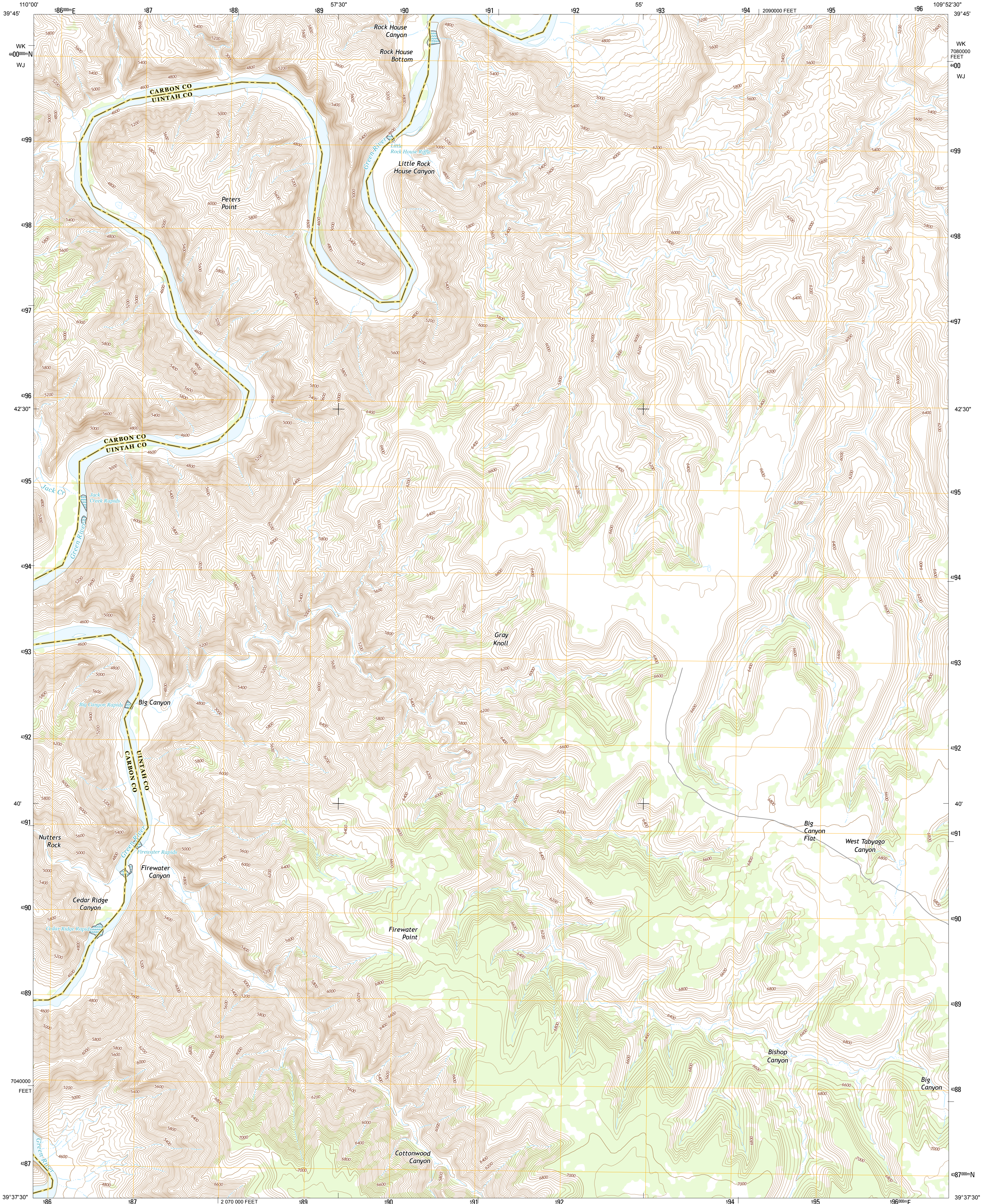




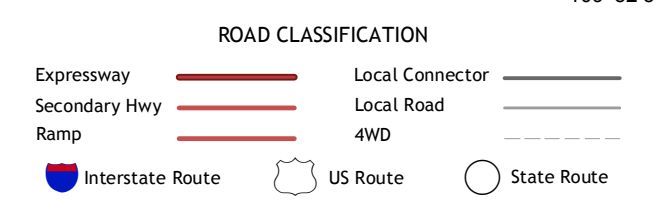
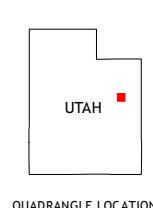
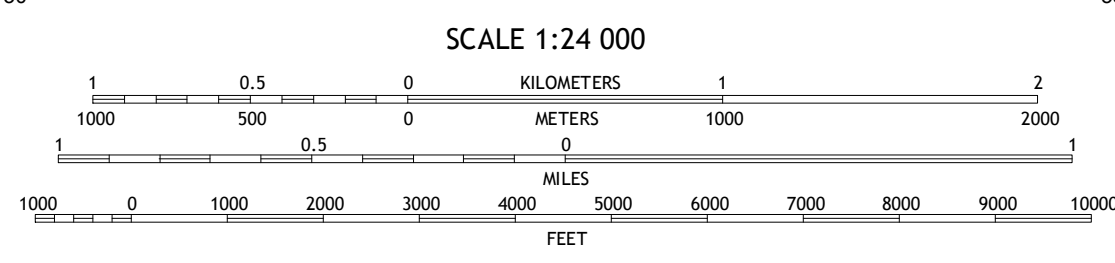
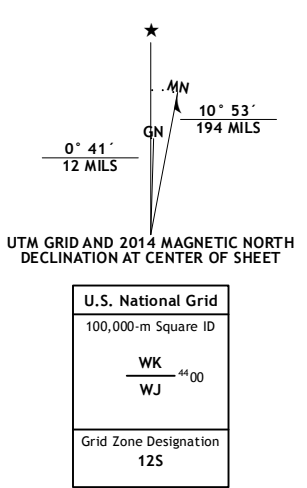
U.S. DEPARTMENT OF THE INTERIOR
U.S. GEOLOGICAL SURVEY



FIREWATER CANYON NORTH QUADRANGLE
UTAH
7.5-MINUTE SERIES



Produced by the United States Geological Survey
 North American Datum of 1983 (NAD83)
 World Geodetic System of 1984 (WGS84). Projection and
 1:000-meter grid; Universal Transverse Mercator, Zone 12S
 10 000-foot ticks; Utah Coordinate System of 1983 (central
 zone)
 This map is not a legal document. Boundaries may be
 generalized for this map scale. Private lands within government
 reservations may not be shown. Obtain permission before
 entering private lands.
 Imagery.....NAIP, June 2011
 Roads.....HERE, ©2013
 Names.....GNIS, 2013
 Hydrography.....National Hydrography Dataset, 2011
 Contours.....National Elevation Dataset, 2000
 Boundaries.....Multiple sources; see metadata file 1972 - 2013
 Public Land Survey System.....BLM, 2011



1	2	3
4	5	6
7	8	

ADJOINING QUADRANGLES

1 Pinnacle Canyon
 2 Duches Hole
 3 Nutters Hole
 4 Cedar Ridge Canyon
 5 Dog Knoll
 6 Steer Ridge Canyon
 7 Firewater Canyon South
 8 Wolf Flat

FIREWATER CANYON NORTH, UT
 2014

