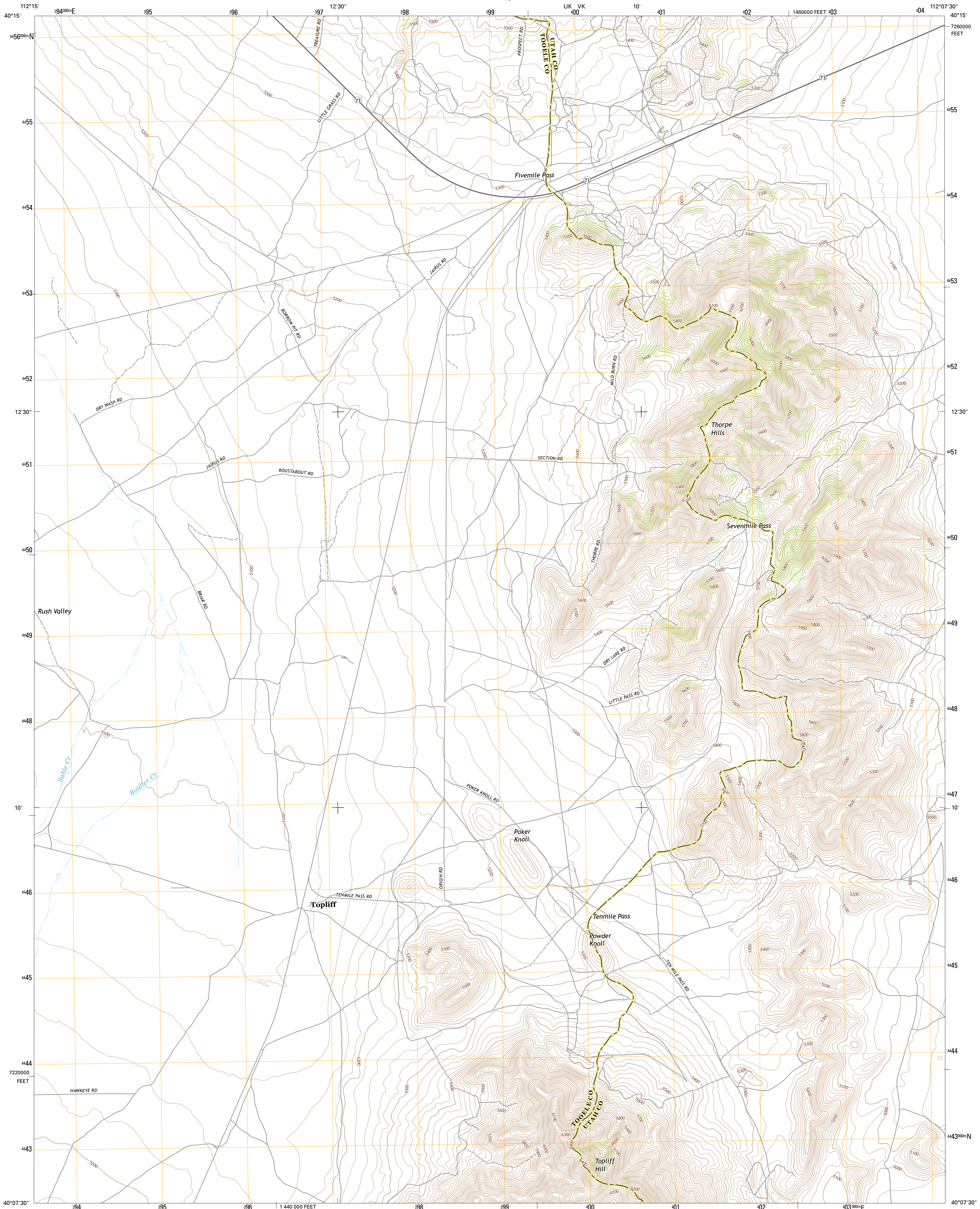




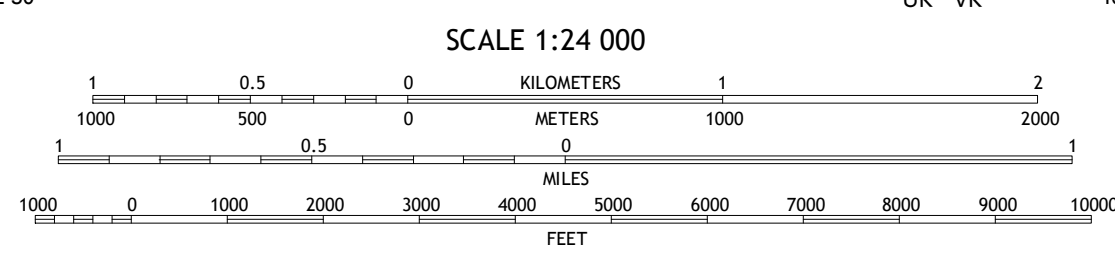
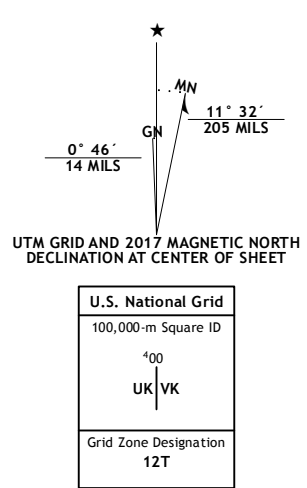
U.S. DEPARTMENT OF THE INTERIOR  
U.S. GEOLOGICAL SURVEY



FIVEMILE PASS QUADRANGLE  
UTAH  
7.5-MINUTE SERIES

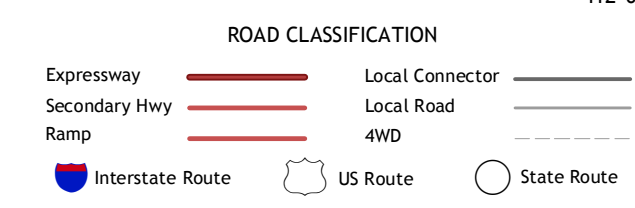
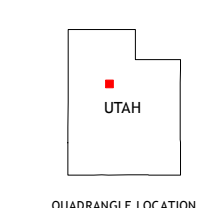


**Produced by the United States Geological Survey**  
 North American Datum of 1983 (NAD83)  
 World Geodetic System of 1984 (WGS84). Projection and  
 1 000-meter grid: Universal Transverse Mercator, Zone 12T  
 10 000-foot ticks: Utah Coordinate System of 1983 (central  
 zone)  
 Imagery: NADIP, October 2014  
 Roads: U.S. Census Bureau, 2015 - 2016  
 Names: GNIS, 2016  
 Hydrography: National Hydrography Dataset, 2014  
 Contours: National Elevation Dataset, 2002  
 Boundaries: Multiple sources; see metadata file 1972 - 2016  
 Public Land Survey System: BLM, 2016  
 Wetlands: FWS National Wetlands Inventory 1977 - 2014



CONTOUR INTERVAL 20 FEET  
NORTH AMERICAN VERTICAL DATUM OF 1988

This map was produced to conform with the  
National Geospatial Program US Topo Product Standard, 2011.  
A metadata file associated with this product is draft version 0.6.19



1	2	3
4	5	6
7	8	

ADJOINING QUADRANGLES

- Ophir
- Mercur
- Cedar Fort
- Vernon NE
- Goshen Pass
- Lofgreen
- Butler Peak
- Allens Ranch

FIVEMILE PASS, UT  
2017

