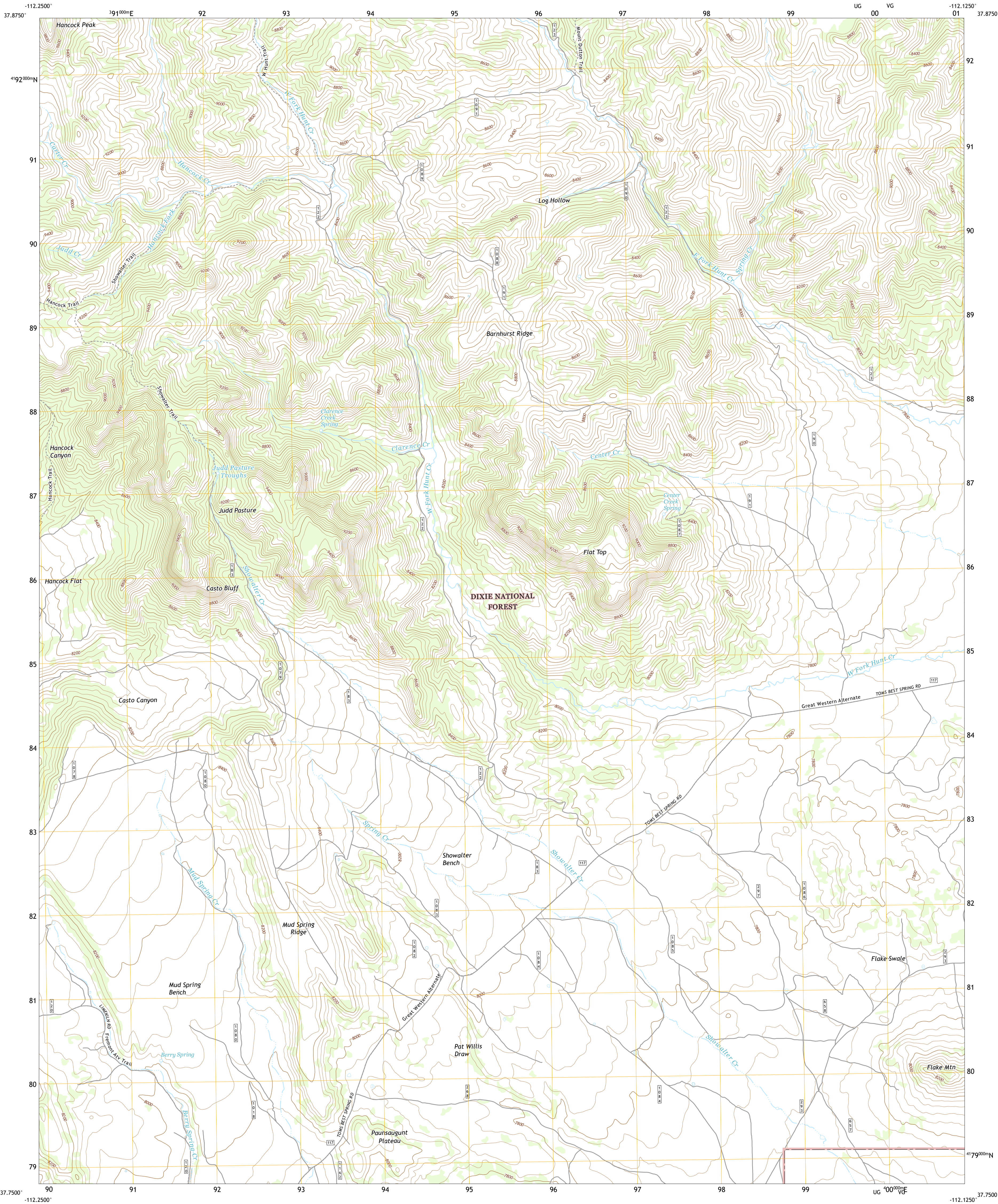




U.S. DEPARTMENT OF THE INTERIOR  
U.S. GEOLOGICAL SURVEY

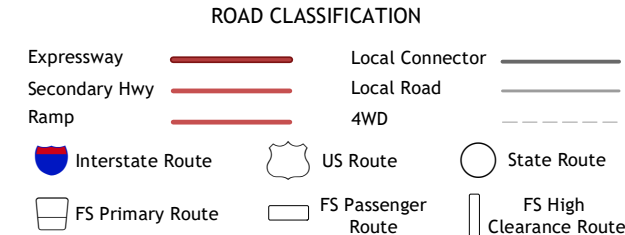
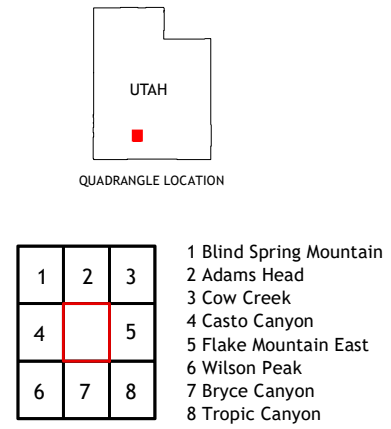
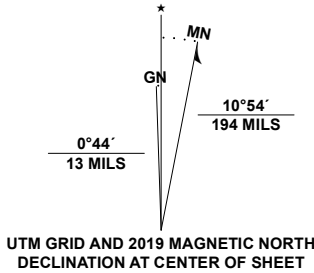


FLAKE MOUNTAIN WEST QUADRANGLE  
UTAH - GARFIELD COUNTY  
7.5-MINUTE SERIES



**Produced by the United States Geological Survey**  
North American Datum of 1983 (NAD83)  
World Geodetic System of 1984 (WGS84). Projection and  
1 000-meter grid: Universal Transverse Mercator, Zone 12S  
This map is not a legal document. Boundaries may be  
generalized for this map scale. Private lands within government  
reservations may not be shown. Obtain permission before  
entering private lands.

Imagery.....NAIP, July 2016 - October 2016  
Roads.....U.S. Census Bureau, 2016  
Roads within US Forest Service Lands.....FS Topo  
Data with limited Forest Service updates, 2013 - 2016  
Names.....GNIS, 1979 - 2019  
Hydrography.....National Hydrography Dataset, 2002 - 2019  
Contours.....National Elevation Dataset, 1999 - 2019  
Boundaries.....Multiple sources: see metadata file 2017  
Public Land Survey System.....BLM, 2019  
Wetlands.....FWS National Wetlands Inventory Not Available



FLAKE MOUNTAIN WEST, UT  
2020

