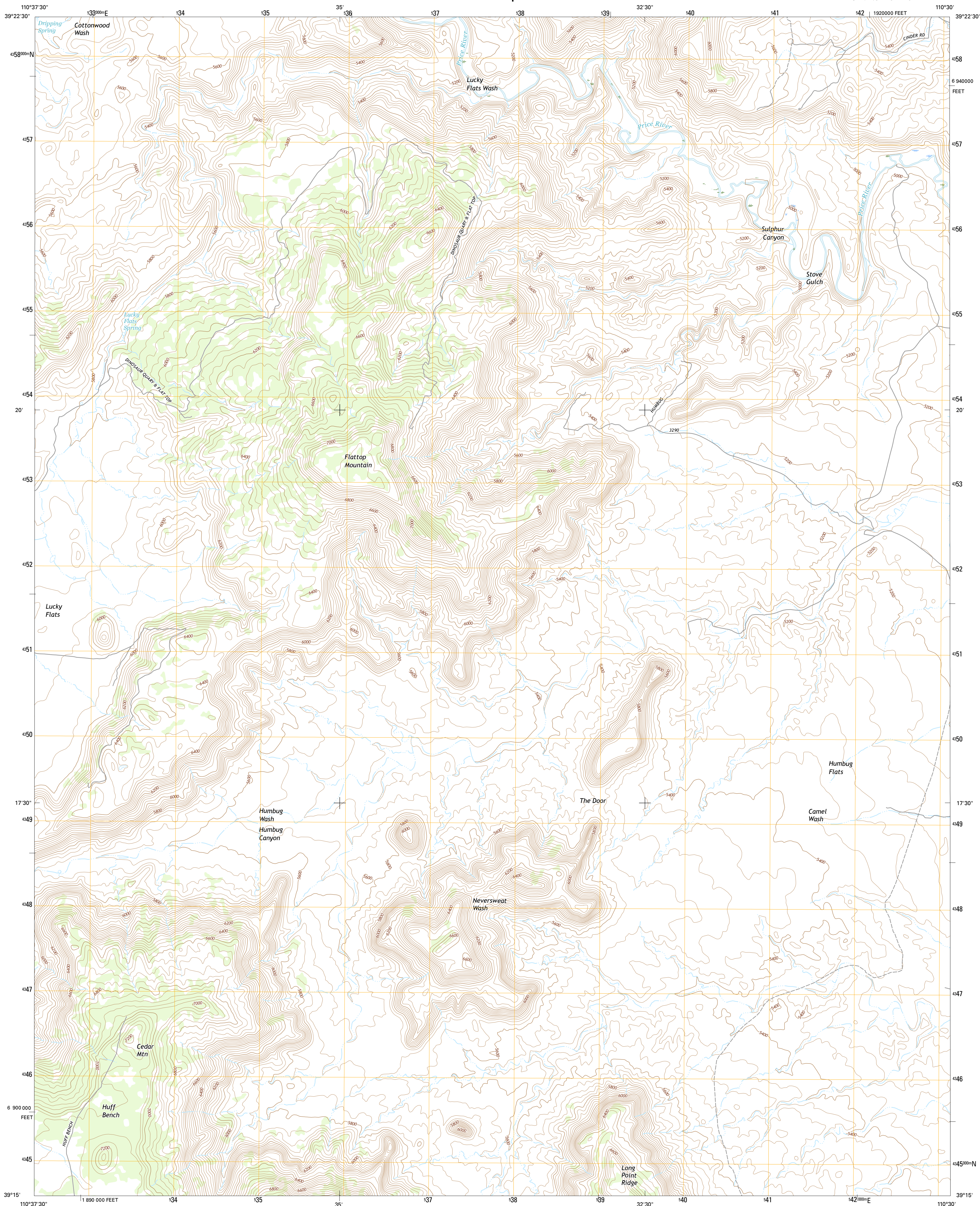




U.S. DEPARTMENT OF THE INTERIOR
U.S. GEOLOGICAL SURVEY



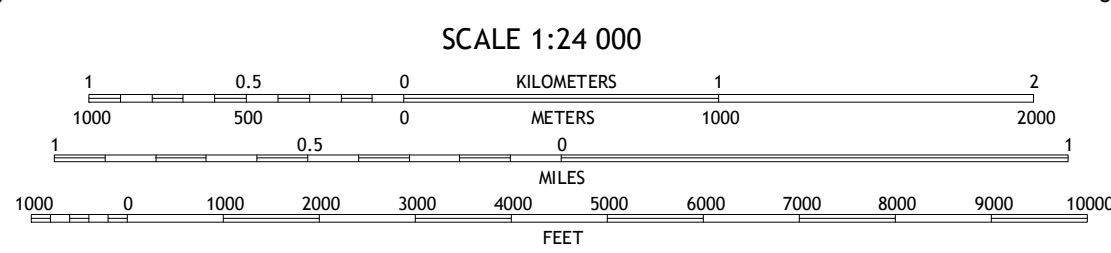
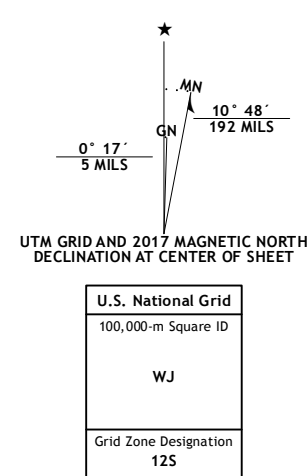
FLATTOP MOUNTAIN QUADRANGLE
UTAH-EMERY CO.
7.5-MINUTE SERIES



Produced by the United States Geological Survey
North American Datum of 1983 (NAD83)
World Geodetic System of 1984 (WGS84). Projection and
1 000-meter grid: Universal Transverse Mercator, Zone 12S
10 000-foot ticks: Utah Coordinate System of 1983 (central
zone)

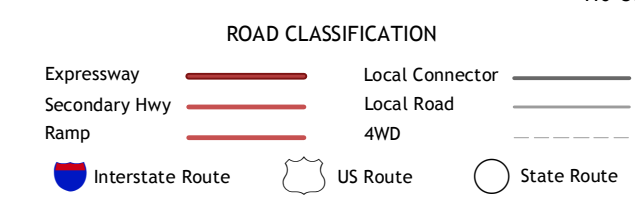
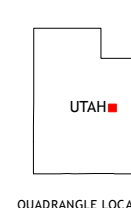
This map is not a legal document. Boundaries may be
generalized for this map scale. Private lands within government
reservations may not be shown. Obtain permission before
entering private lands.

Imagery:.....NAP, October 2014
Roads:.....U.S. Census Bureau, 2015 - 2016
Names:.....GNIS, 2016
Hydrography:.....National Hydrography Dataset, 2014
Contours:.....National Elevation Dataset, 2000
Boundaries:.....Multiple sources; see metadata file 1972 - 2016
Public Land Survey System:.....BLM, 2016
Wetlands:.....FWS National Wetlands Inventory 1977 - 2014



SCALE 1:24 000

CONTOUR INTERVAL 40 FEET
NORTH AMERICAN VERTICAL DATUM OF 1988
This map was produced to conform with the
National Geospatial Program US Topo Product Standard, 2011.
A metadata file associated with this product is draft version 0.6.19



ADJOINING QUADRANGLES

1	2	3
4	5	6
7	8	

1 Olsen Reservoir
2 Mounds
3 Cedar
4 Cow Flats
5 Grassy
6 Bob Hill Knoll
7 Chimney Rock
8 Dry Mesa

FLATTOP MOUNTAIN, UT
2017

