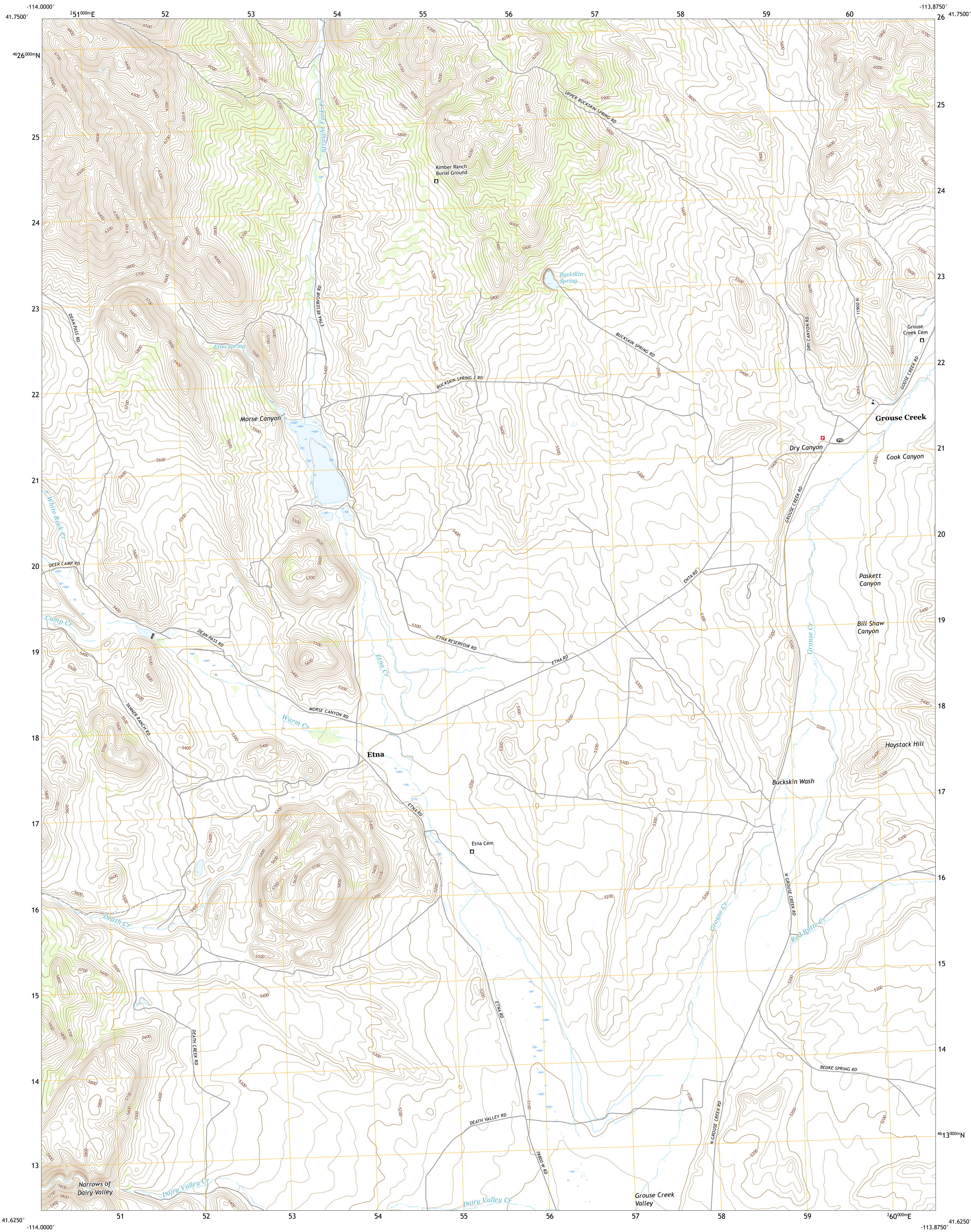




U.S. DEPARTMENT OF THE INTERIOR  
U.S. GEOLOGICAL SURVEY



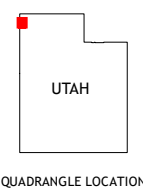
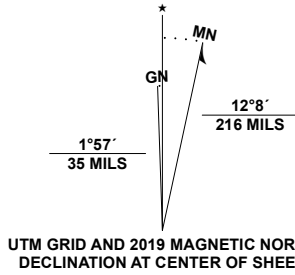
GROUSE CREEK QUADRANGLE  
UTAH - BOX ELDER COUNTY  
7.5-MINUTE SERIES



Produced by the United States Geological Survey

North American Datum of 1983 (NAD83)  
World Geodetic System of 1984 (WGS84) Projection and  
1 000-meter grid/Universal Transverse Mercator, Zone 11T12T  
This map is not a legal document. Boundaries may be  
generalized for this map scale. Private lands within government  
reservations may not be shown. Obtain permission before  
entering private lands.

Imagery.....NAIP, August 2016 - October 2016  
Roads.....U.S. Census Bureau, 2016  
Names.....GNIS, 1979 - 2020  
Hydrography.....National Hydrography Dataset, 2003 - 2019  
Contours.....National Elevation Dataset, 2002  
Boundaries.....Multiple sources: see metadata file, 2017 - 2018  
Public Land Survey System.....BLM, 2019  
Wetlands.....FWS National Wetlands Inventory 1983 - 2013



1	2	3
4	5	6
7	8	9

- 1 Judd Mountain
- 2 Dry Canyon Mountain
- 3 Kimbelt Creek
- 4 Death Creek Reservoir
- 5 Ingham Canyon
- 6 Dairy Valley
- 7 Toms Cabin Spring
- 8 Rocky Pass Peak

ROAD CLASSIFICATION	
Expressway	Local Connector
Secondary Hwy	Local Road
Ramp	4WD
Interstate Route	US Route
	State Route

GROUSE CREEK, UT  
2020

