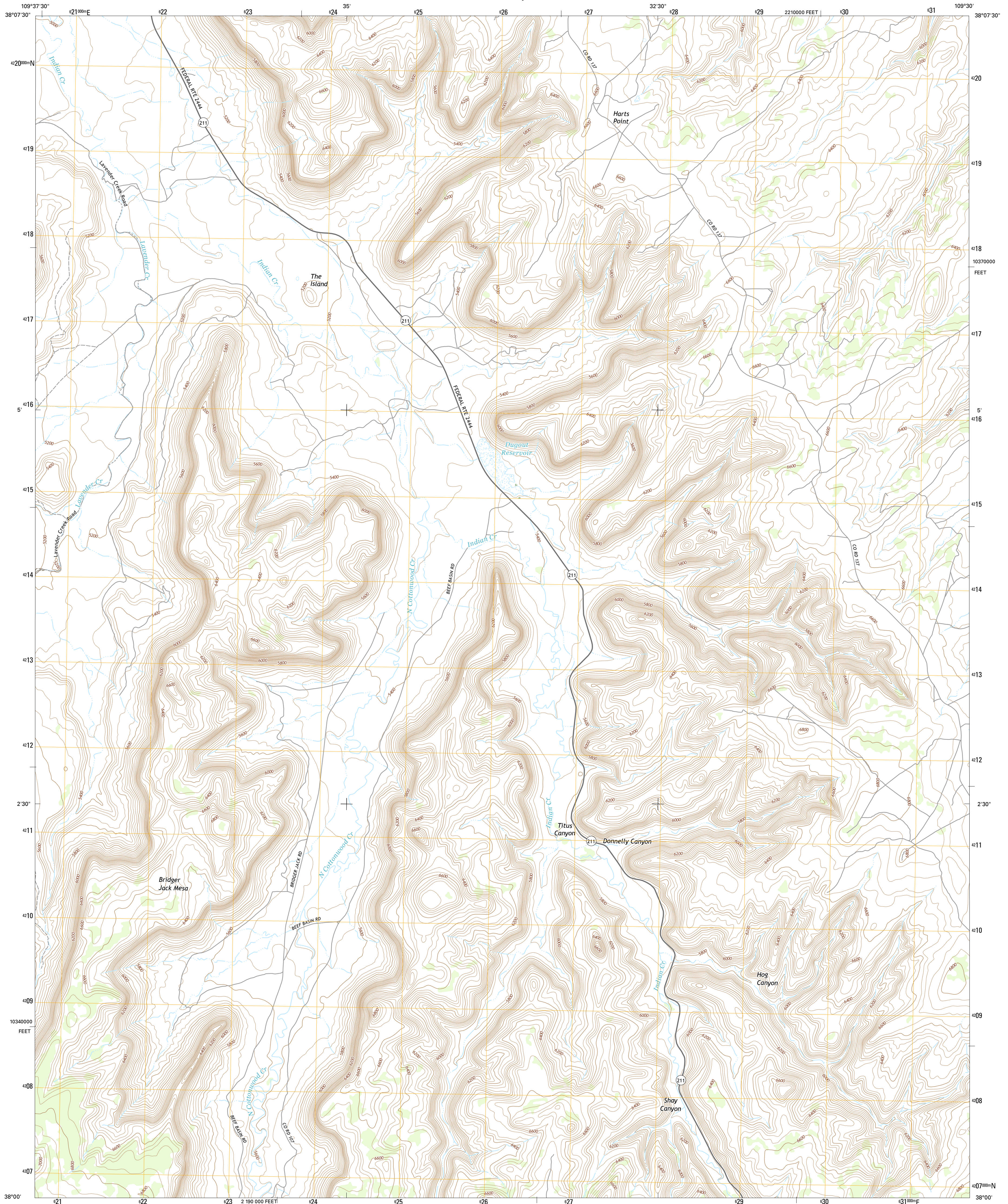




U.S. DEPARTMENT OF THE INTERIOR
U.S. GEOLOGICAL SURVEY



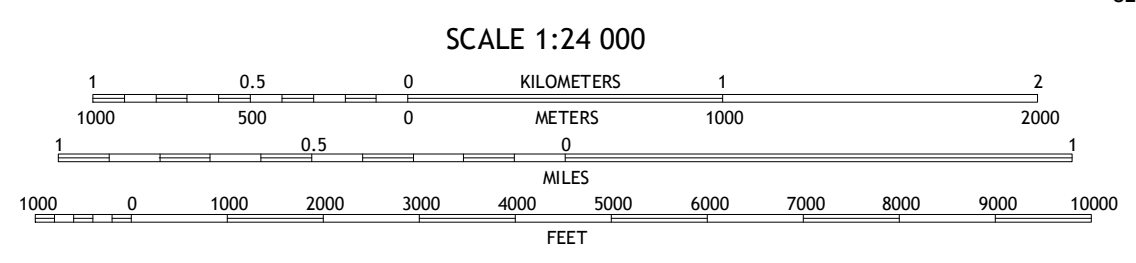
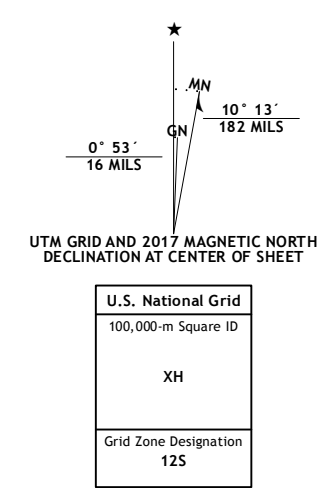
HARTS POINT SOUTH QUADRANGLE
UTAH-SAN JUAN CO.
7.5-MINUTE SERIES



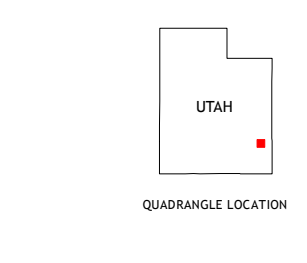
Produced by the United States Geological Survey
North American Datum of 1983 (NAD83)
World Geodetic System of 1984 (WGS84). Projection and
1 000-foot ticks: Utah Coordinate System of 1983 (south zone)

This map is not a legal document. Boundaries may be
generalized for this map scale. Private lands within government
reservations may not be shown. Obtain permission before
entering private lands.

ImageryN.A.I.P.	October	2014
RoadsU.S. Census Bureau	2015 - 2016	
NamesGNIS	2016	
HydrographyNational Hydrography Dataset	2014	
ContoursNational Elevation Dataset	2000	
BoundariesMultiple sources; see metadata file	1972 - 2016	
Public Land Survey SystemBLM	2016	
WetlandsFWS National Wetlands Inventory	1977 - 2014	



CONTOUR INTERVAL 40 FEET
NORTH AMERICAN VERTICAL DATUM OF 1988
This map was produced to conform with the
National Geospatial Program US Topo Product Standard, 2011.
A metadata file associated with this product is draft version 0.6.19



ROAD CLASSIFICATION	
Expressway	Local Connector
Secondary Hwy	Local Road
Ramp	4WD
Interstate Route	US Route
	State Route

1	2	3
4	5	6
7	8	

- 1 North Six-shooter Peak
- 2 Harts Point North
- 3 Hatch Rock
- 4 South Six-shooter Peak
- 5 Photograph Gap
- 6 Cathedral Butte
- 7 Shay Mountain
- 8 Monticello Lake

HARTS POINT SOUTH, UT
2017

