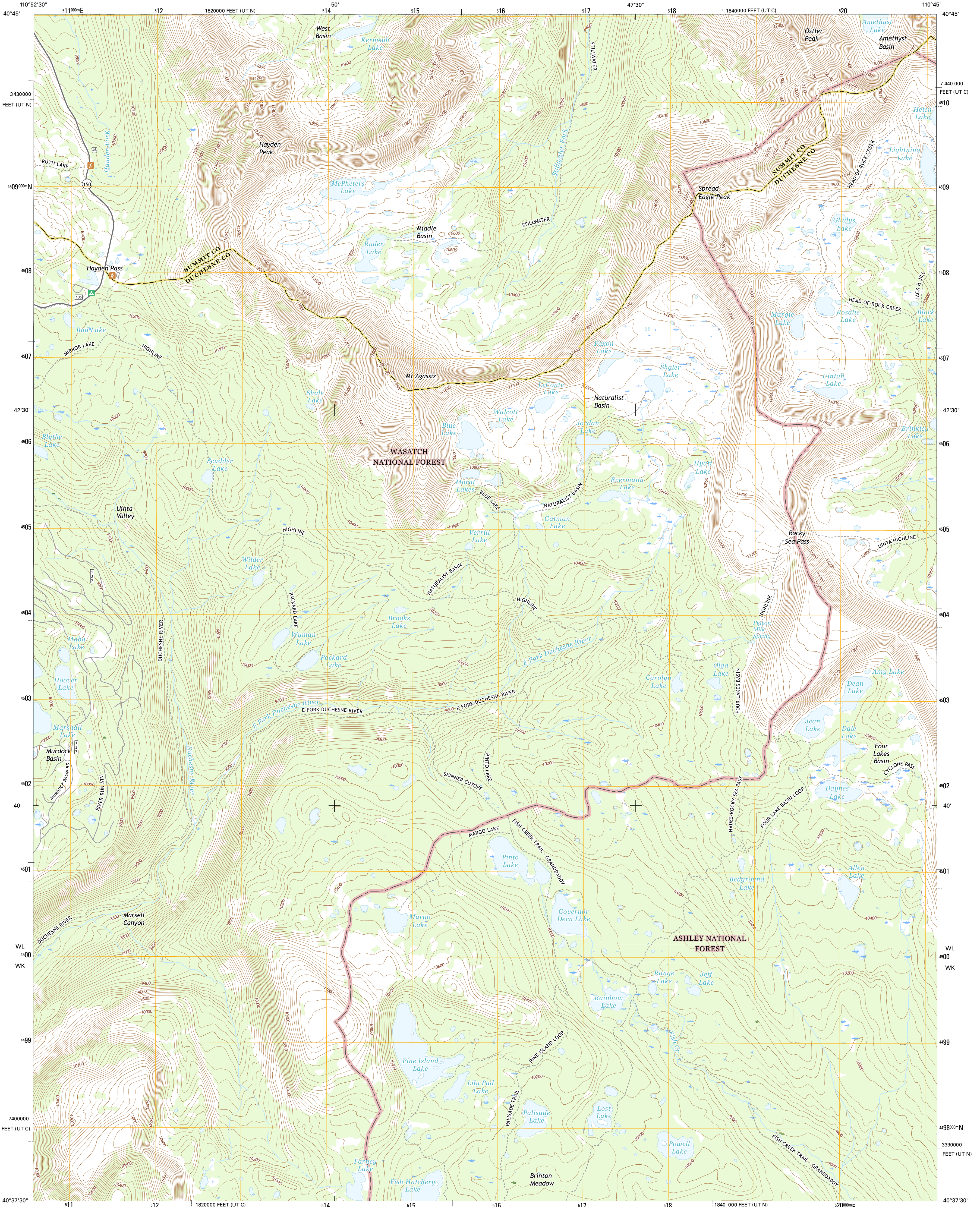




U.S. DEPARTMENT OF THE INTERIOR  
U.S. GEOLOGICAL SURVEY



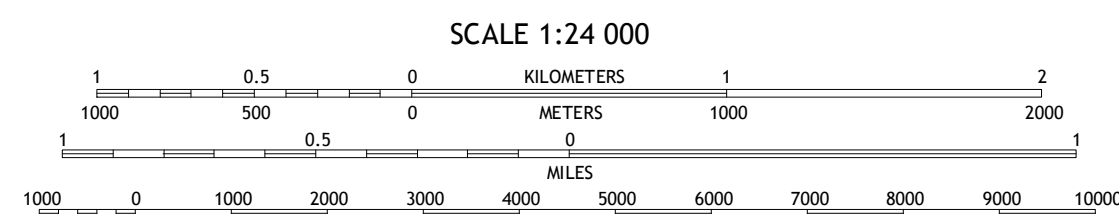
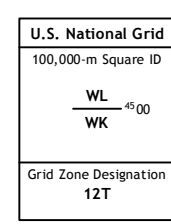
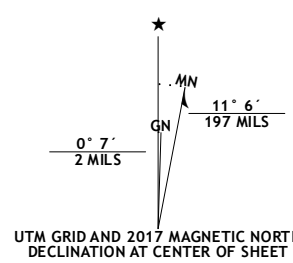
HAYDEN PEAK QUADRANGLE  
UTAH  
7.5-MINUTE SERIES



Produced by the United States Geological Survey  
North American Datum of 1983 (NAD83)  
World Geodetic System of 1984 (WGS84) Projection and  
1 000-meter grid: Universal Transverse Mercator, Zone 12T  
10 000-foot ticks: Utah Coordinate System of 1983 (central and  
north zones)

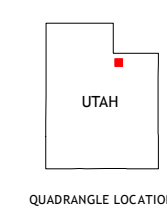
This map is not a legal document. Boundaries may be  
generalized for this map scale. Private lands within government  
reservations may not be shown. Obtain permission before  
entering private lands.

Imagery: NIP, October 2014  
Roads: U.S. Census Bureau, 2015 - 2016  
Roads within US Forest Service Lands: FSTopo Data  
with limited Forest Service updates, 2012 - 2016  
Names: GNIS, 2016  
Hydrography: National Hydrography Dataset, 2014  
Contours: National Elevation Dataset, 2002  
Boundaries: Multiple sources; see metadata file 1972 - 2016  
Public Land Survey System: BLM, 2016  
Wetlands: FWS National Wetlands Inventory 1977 - 2014



CONTOUR INTERVAL 40 FEET  
NORTH AMERICAN VERTICAL DATUM OF 1988

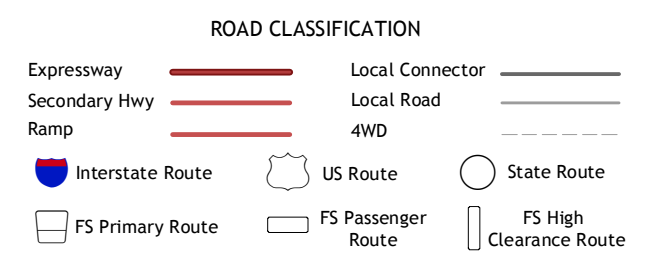
This map was produced to conform with the  
National Geospatial Program US Topo Product Standard, 2011.  
A metadata file associated with this product is draft version 0.6.19



1	2	3
4	5	6
7	8	

ADJOINING QUADRANGLES

- 1 Whitney Reservoir
- 2 Christmas Meadows
- 3 Red Knob
- 4 Mirror Lake
- 5 Explorer Peak
- 6 Iron Mine Mountain
- 7 Granddaddy Lake
- 8 Tworose Pass



Check with local Forest Service unit  
for current travel conditions and restrictions.

HAYDEN PEAK, UT  
2017

