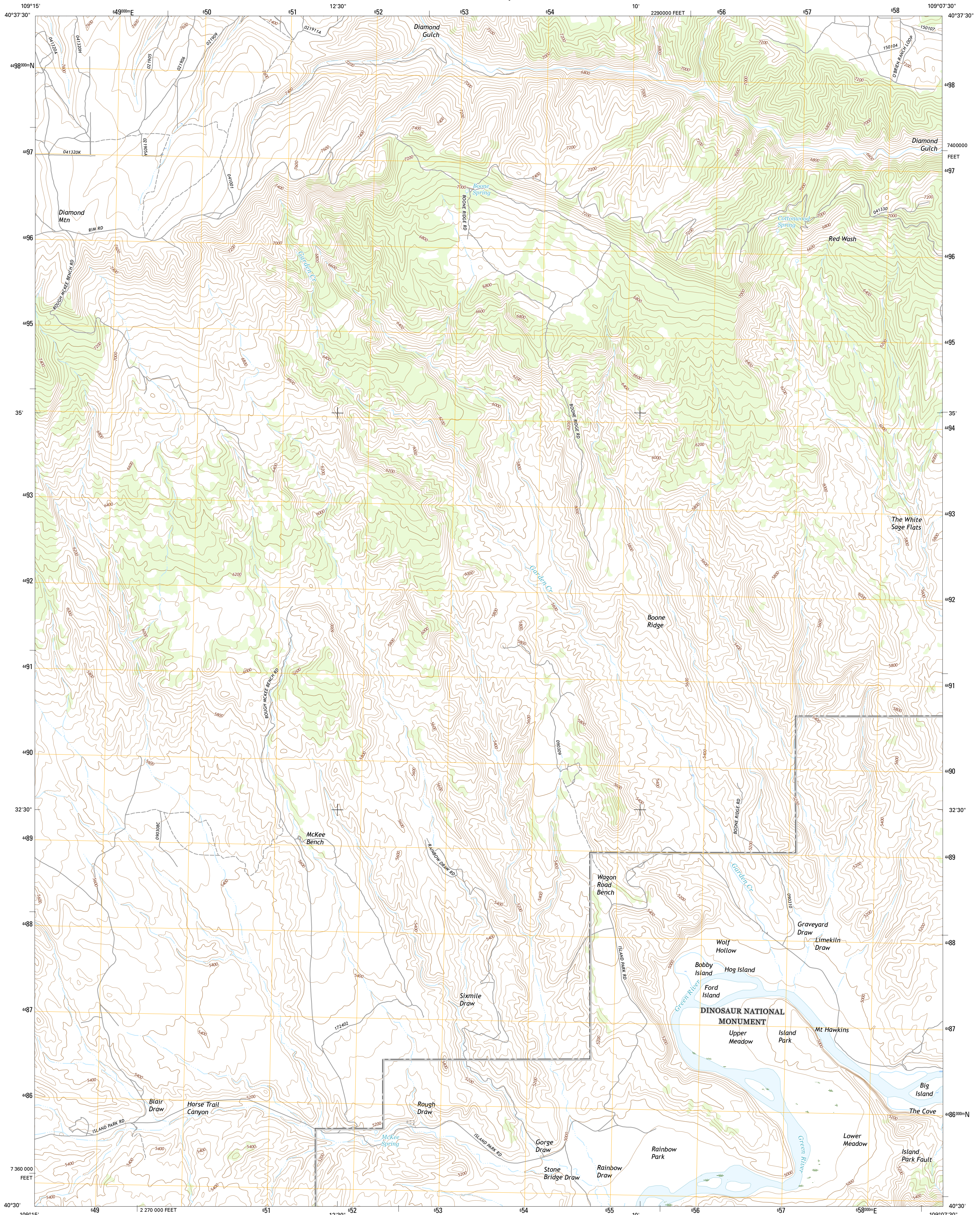




U.S. DEPARTMENT OF THE INTERIOR
U.S. GEOLOGICAL SURVEY



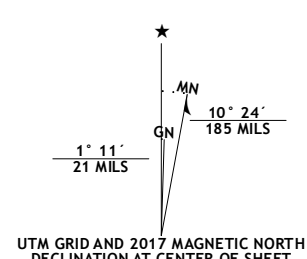
ISLAND PARK QUADRANGLE
UTAH-UINTAH CO.
7.5-MINUTE SERIES



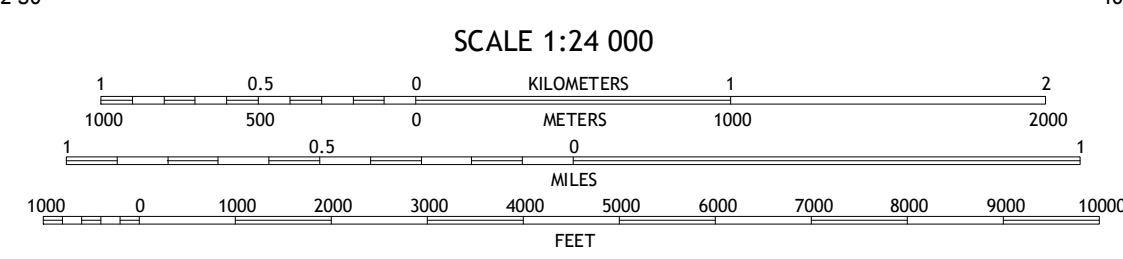
Produced by the United States Geological Survey
North American Datum of 1983 (NAD83)
World Geodetic System of 1984 (WGS84) Projection and
1 000-meter grid; Universal Transverse Mercator, Zone 12T
10 000-foot ticks; Utah Coordinate System of 1983 (central
zone)

This map is not a legal document. Boundaries may be
generalized for this map scale. Private lands within government
reservations may not be shown. Obtain permission before
entering private lands.

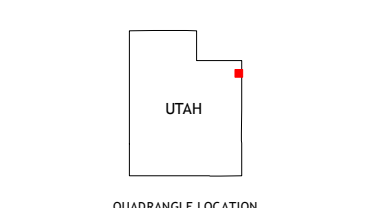
Images.....NAP, October 2014
Roads.....U.S. Census Bureau, 2015 - 2016
Names.....GNS, 2016
Hydrography.....National Hydrography Dataset, 2014
Contours.....National Elevation Dataset, 2000
Boundaries.....Multiple sources; see metadata file 1972_2016
Public Land Survey System.....BLM, 2016
Wetlands.....FWS National Wetlands Inventory 1977 - 2014



| |
|---|
| U.S. National Grid 100,000-m Square ID |
| XX |
| Grid Zone Designation 12T |



CONTOUR INTERVAL 40 FEET
NORTH AMERICAN VERTICAL DATUM OF 1988
This map was produced to conform with the
National Geospatial Program US Topo Product Standard, 2011.
A metadata file associated with this product is draft version 0.6.19



| | | | |
|---|---|--------------------|---------------|
| 1 | 2 | 3 | 1 Blair Basin |
| 4 | 5 | 2 Crouse Reservoir | |
| 6 | 7 | 3 Hoy Mountain | |
| 8 | | 4 Jones Ridge | |
| | | 5 Jones Hole | |
| | | 6 Dinosaur Quarry | |
| | | 7 Sulte Mountain | |
| | | 8 Sulte Reservoir | |

| ROAD CLASSIFICATION | | |
|---------------------|-----------------|-------------|
| Expressway | Local Connector | State Route |
| Secondary Hwy | Local Road | |
| Ramp | 4WD | |
| Interstate Route | US Route | |

ISLAND PARK, UT
2017

