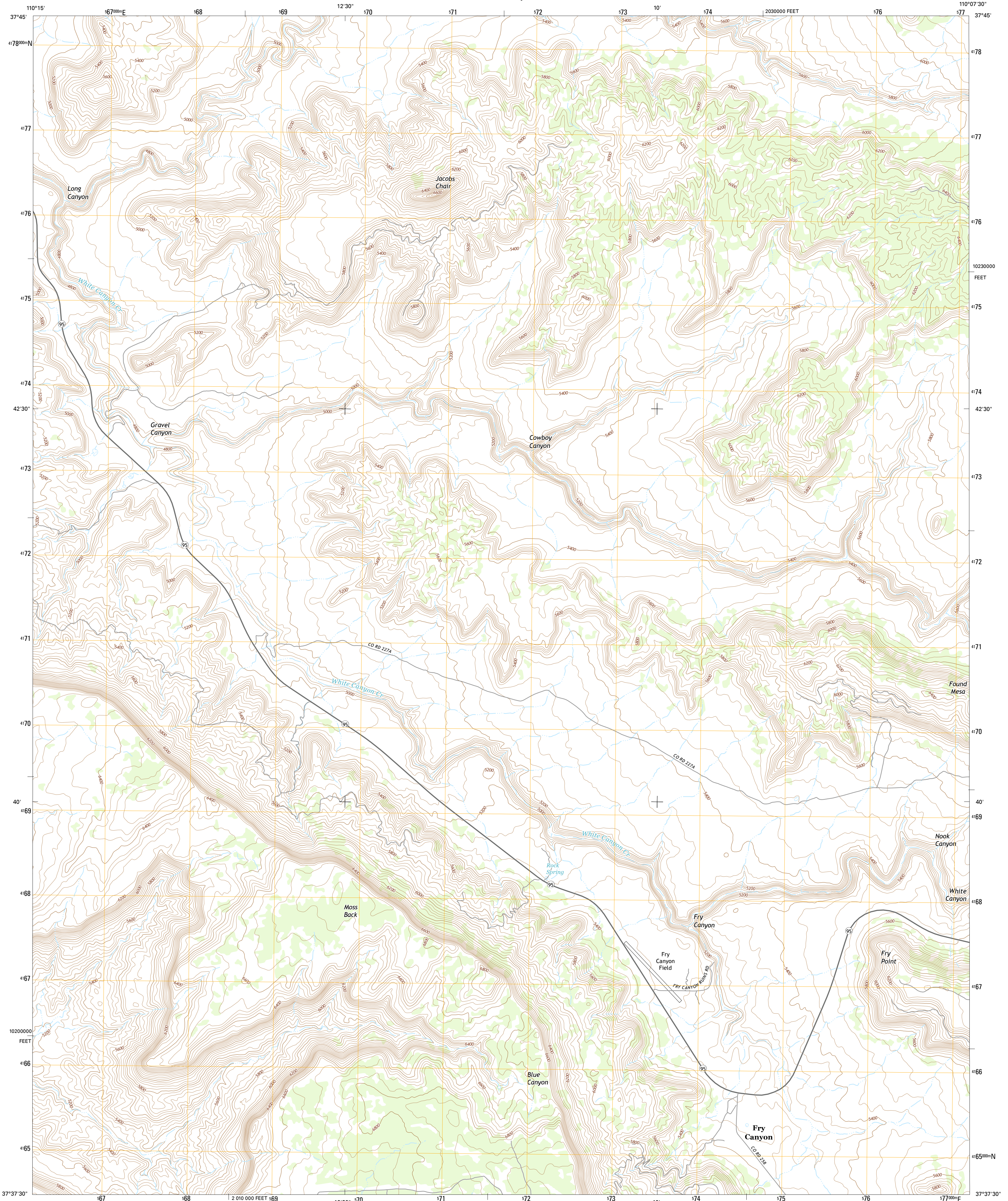




U.S. DEPARTMENT OF THE INTERIOR
U.S. GEOLOGICAL SURVEY



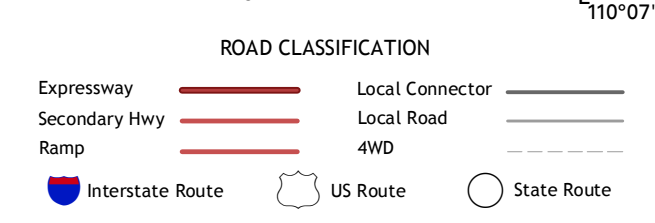
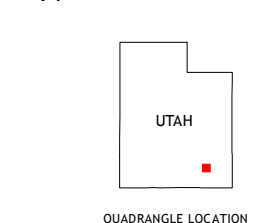
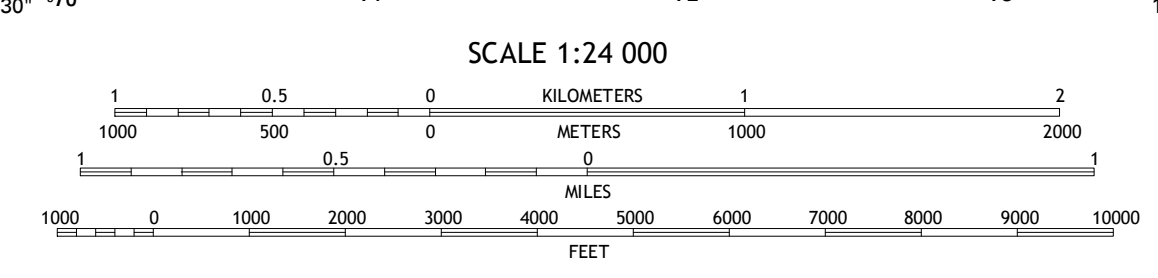
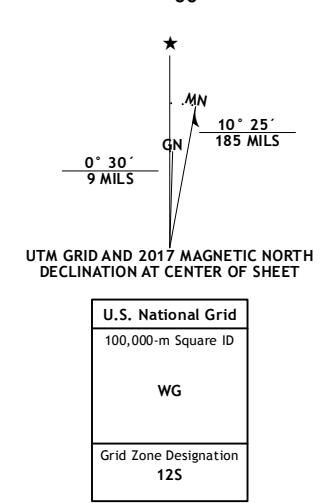
JACOBS CHAIR QUADRANGLE
UTAH-SAN JUAN CO.
7.5-MINUTE SERIES



Produced by the United States Geological Survey
 North American Datum of 1983 (NAD83)
 World Geodetic System of 1984 (WGS84), Projection and
 1 000-meter grid: Universal Transverse Mercator, Zone 12S
 10 000-foot ticks: Utah Coordinate System of 1983 (south zone)

This map is not a legal document. Boundaries may be
 generalized for this map scale. Private lands within government
 reservations may not be shown. Obtain permission before
 entering private lands.

Imagery.....NIP, October 2014
 Roads.....U.S. Census Bureau, 2015 - 2016
 Names.....GNIS, 2016
 Hydrography.....National Hydrography Dataset, 2014
 Contours.....National Elevation Dataset, 1999
 Boundaries.....Multiple sources; see metadata file 1972 - 2016
 Public Land Survey System.....BLM, 2016
 Wetlands.....FWS National Wetlands Inventory 1977 - 2014



| | | |
|---|---|---|
| 1 | 2 | 3 |
| 4 | 5 | 6 |
| 7 | 8 | |

ADJOINING QUADRANGLES

- 1 Copper Point
- 2 Indian Head Pass
- 3 Black Steer Canyon
- 4 Mancos Mesa NE
- 5 The Cheesebox
- 6 Chocolate Drop
- 7 Fry Spring
- 8 Moss Back Butte

JACOBS CHAIR, UT
2017

