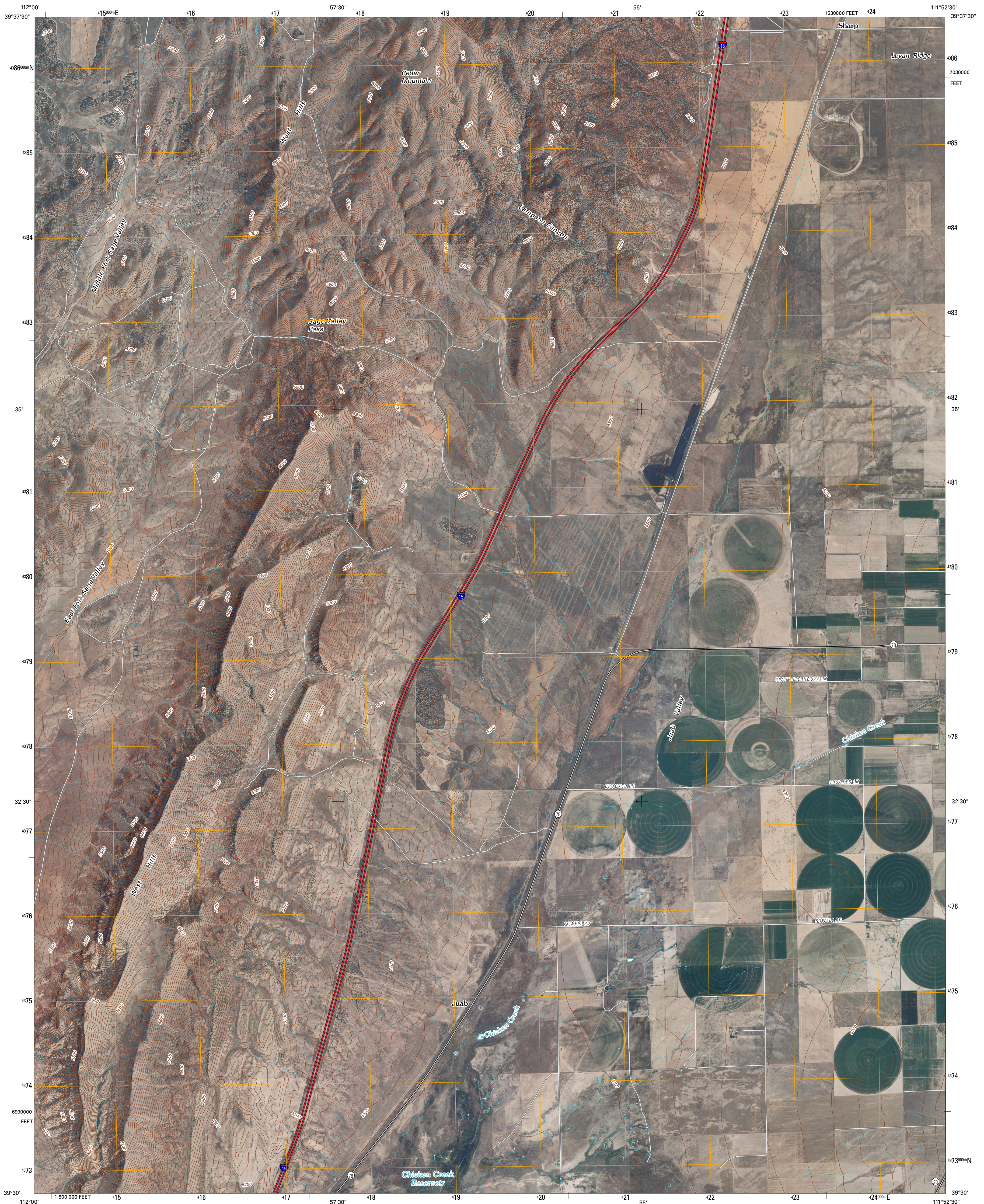




U.S. DEPARTMENT OF THE INTERIOR  
U. S. GEOLOGICAL SURVEY

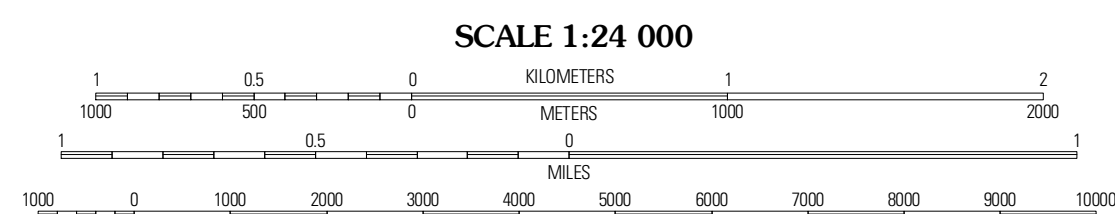
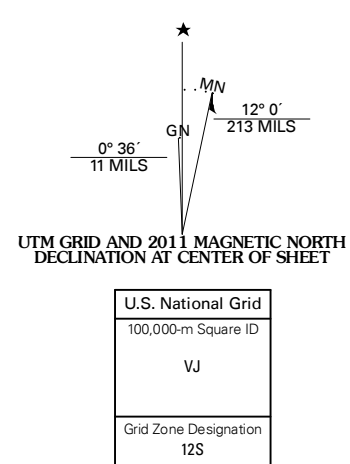


JUAB QUADRANGLE  
UTAH  
7.5-MINUTE SERIES

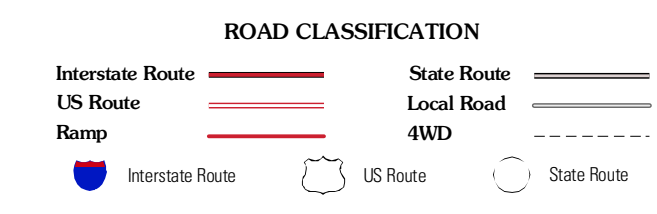
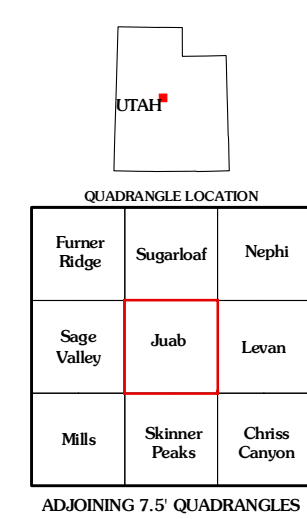


Produced by the United States Geological Survey  
North American Datum of 1983 (NAD83)  
World Geodetic System of 1984 (WGS84) Projection and  
1 000-meter grid; Universal Transverse Mercator, Zone 12S  
10 000-foot ticks; Utah Coordinate System of 1983  
(central zone)

Imagery.....NAP, July 2009  
Roads.....©2006-2010 Tele Atlas  
Names.....GNIS, 2009  
Hydrography.....National Hydrography Dataset, 2009  
Contours.....National Elevation Dataset, 2002



CONTOUR INTERVAL 20 FEET  
NORTH AMERICAN VERTICAL DATUM OF 1988  
This map was produced to conform with version 0.5.10 of the  
draft USGS Standards for 7.5-Minute Quadrangle Maps.  
A metadata file associated with this product is draft version 0.5.11



JUAB, UT  
2011