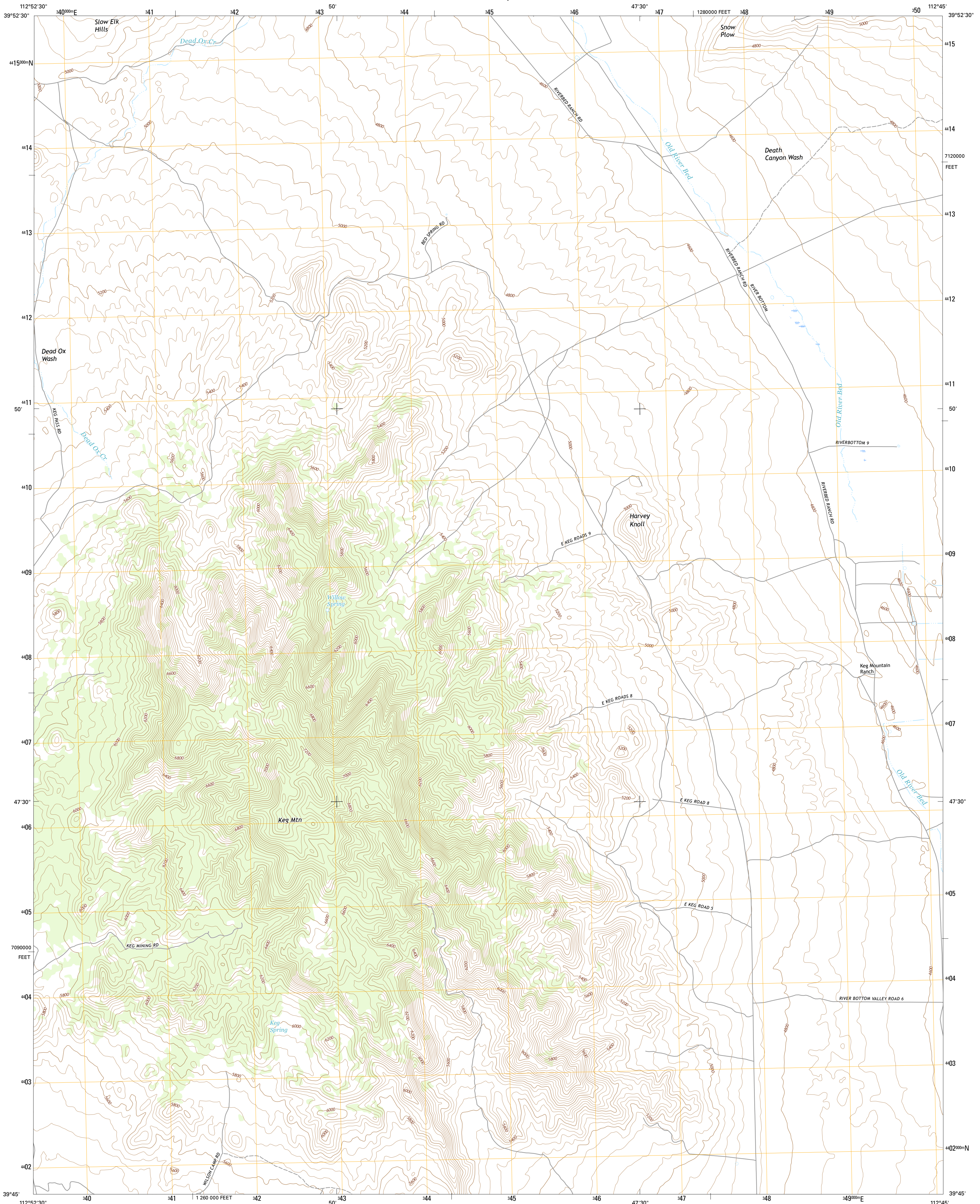




U.S. DEPARTMENT OF THE INTERIOR
U.S. GEOLOGICAL SURVEY



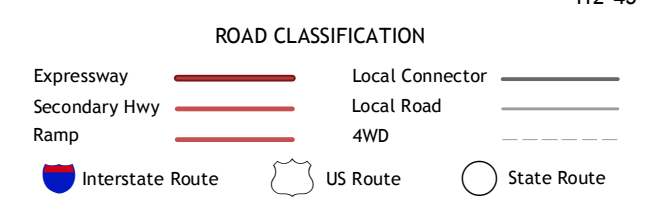
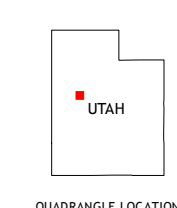
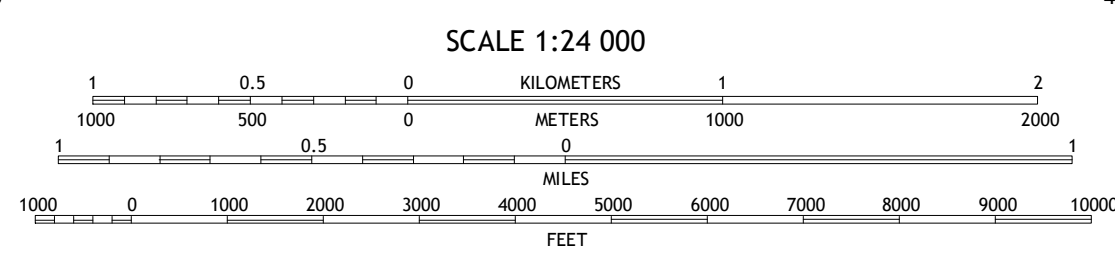
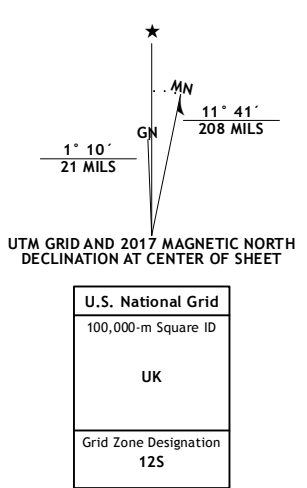
KEG MOUNTAIN RANCH QUADRANGLE
UTAH-JUAB CO.
7.5-MINUTE SERIES



Produced by the United States Geological Survey
North American Datum of 1983 (NAD83)
World Geodetic System of 1984 (WGS84) - Projection and
1 000-meter grid: Universal Transverse Mercator, Zone 12S
10 000-foot ticks: Utah Coordinate System of 1983 (central
zone)

This map is not a legal document. Boundaries may be
generalized for this map scale. Private lands within government
reservations may not be shown. Obtain permission before
entering private lands.

Imagery.....NAIP, October 2014
Roads.....U.S. Census Bureau, 2015-2016
Names.....GNIS, 2016
Hydrography.....National Hydrography Dataset, 2014
Contours.....National Elevation Dataset, 1999
Boundaries.....Multiple sources; see metadata file 1972-2016
Public Land Survey System.....BLM, 2016
Wetlands.....FWS National Wetlands Inventory 1977-2014



1	2	3
4	5	6
7	8	

ADJOINING QUADRANGLES

- 1 Table Mountain
 - 2 Coyote Springs
 - 3 Indian Springs
 - 4 Keg Pass
 - 5 Erickson Wash SW
 - 6 Picture Rock Hills
 - 7 The Hogback
 - 8 Crater Bench Reservoir
- KEG MOUNTAIN RANCH, UT**
2017

