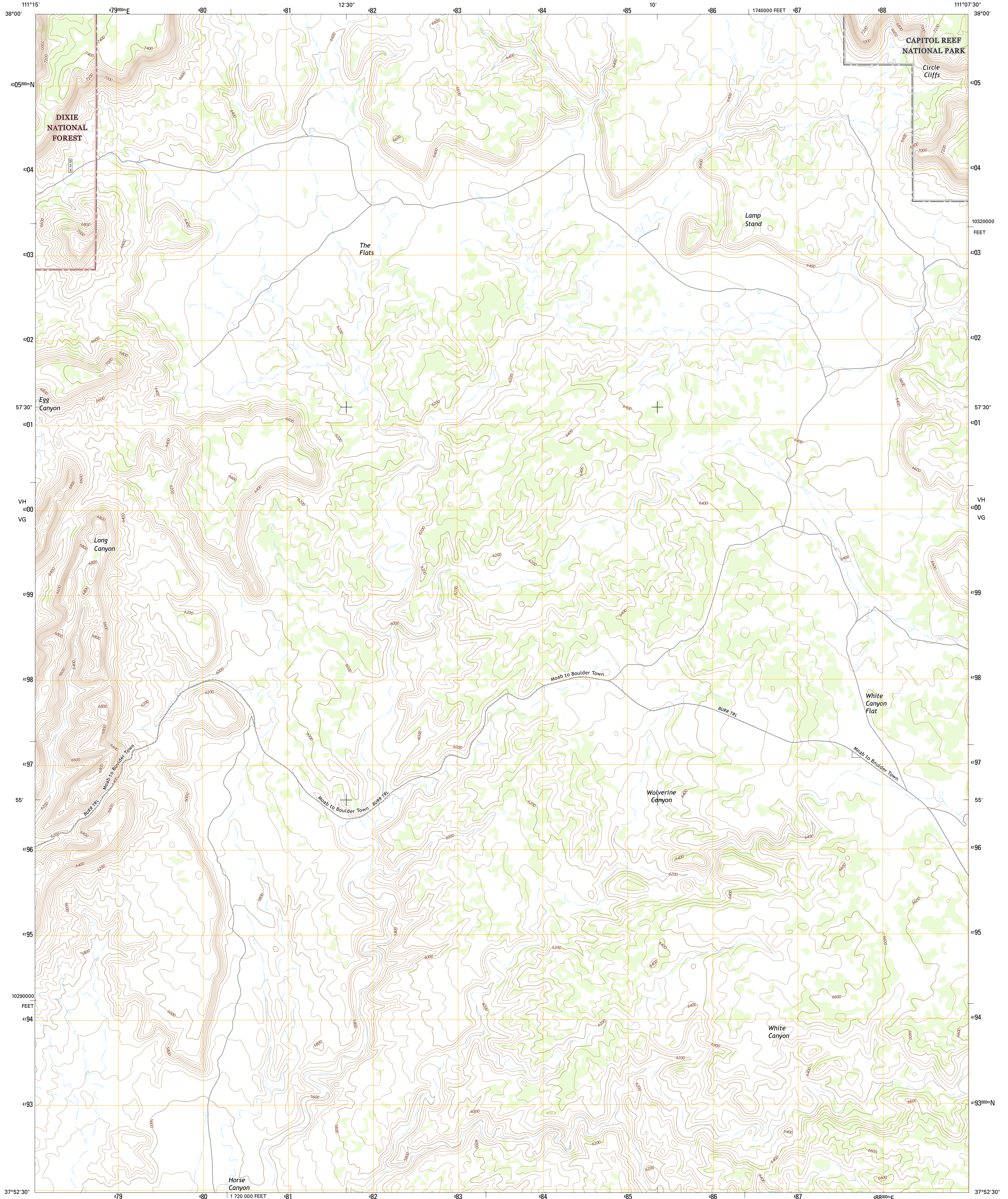




U.S. DEPARTMENT OF THE INTERIOR
U.S. GEOLOGICAL SURVEY



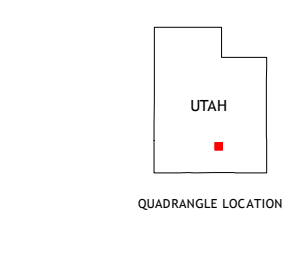
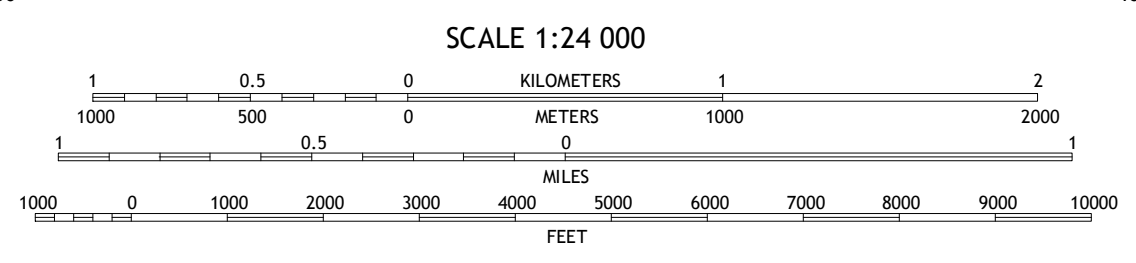
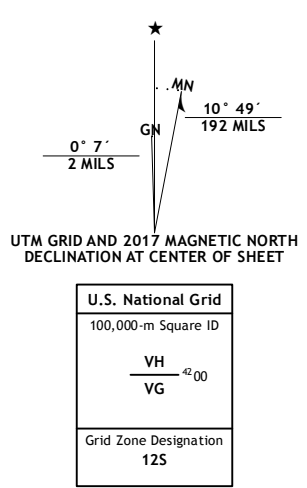
LAMP STAND QUADRANGLE
UTAH-GARFIELD CO.
7.5-MINUTE SERIES



Produced by the United States Geological Survey
 North American Datum of 1983 (NAD83)
 World Geodetic System of 1984 (WGS84) - Projection and
 1 000-meter grid: Universal Transverse Mercator, Zone 12S
 10 000-foot ticks: Utah Coordinate System of 1983 (south zone)

This map is not a legal document. Boundaries may be
 generalized for this map scale. Private lands within government
 reservations may not be shown. Obtain permission before
 entering private lands.

Image:.....NAP, October 2014
 Roads:.....U.S. Census Bureau, 2015 - 2016
 Roads within US Forest Service Lands:.....FS Topo Data
 with limited Forest Service updates, 2012 - 2016
 Names:.....GNIS, 2016
 Hydrography:.....National Hydrography Dataset, 2014
 Contours:.....National Elevation Dataset, 1999
 Boundaries:.....Multiple sources; see metadata file 1972 - 2016
 Public Land Survey System:.....BLM, 2016
 Wetlands:.....FWS National Wetlands Inventory 1977 - 2014



ROAD CLASSIFICATION

Expressway	Local Connector	State Route
Secondary Hwy	Local Road	FS High
Ramp	4WD	Clearance Route
Interstate Route	US Route	FS Passenger Route
FS Primary Route	FS Passenger Route	

Check with local Forest Service unit
for current travel conditions and restrictions.

ADJOINING QUADRANGLES

1	2	3
4	5	6
7	8	

1 Lower Bowns Reservoir
 2 Bear Canyon
 3 Sandy Creek Benches
 4 Steep Creek Divide
 5 Bitter Creek Divide
 6 King Bench
 7 Pioneer Mesa
 8 Wagon Box Mesa

LAMP STAND, UT
2017

