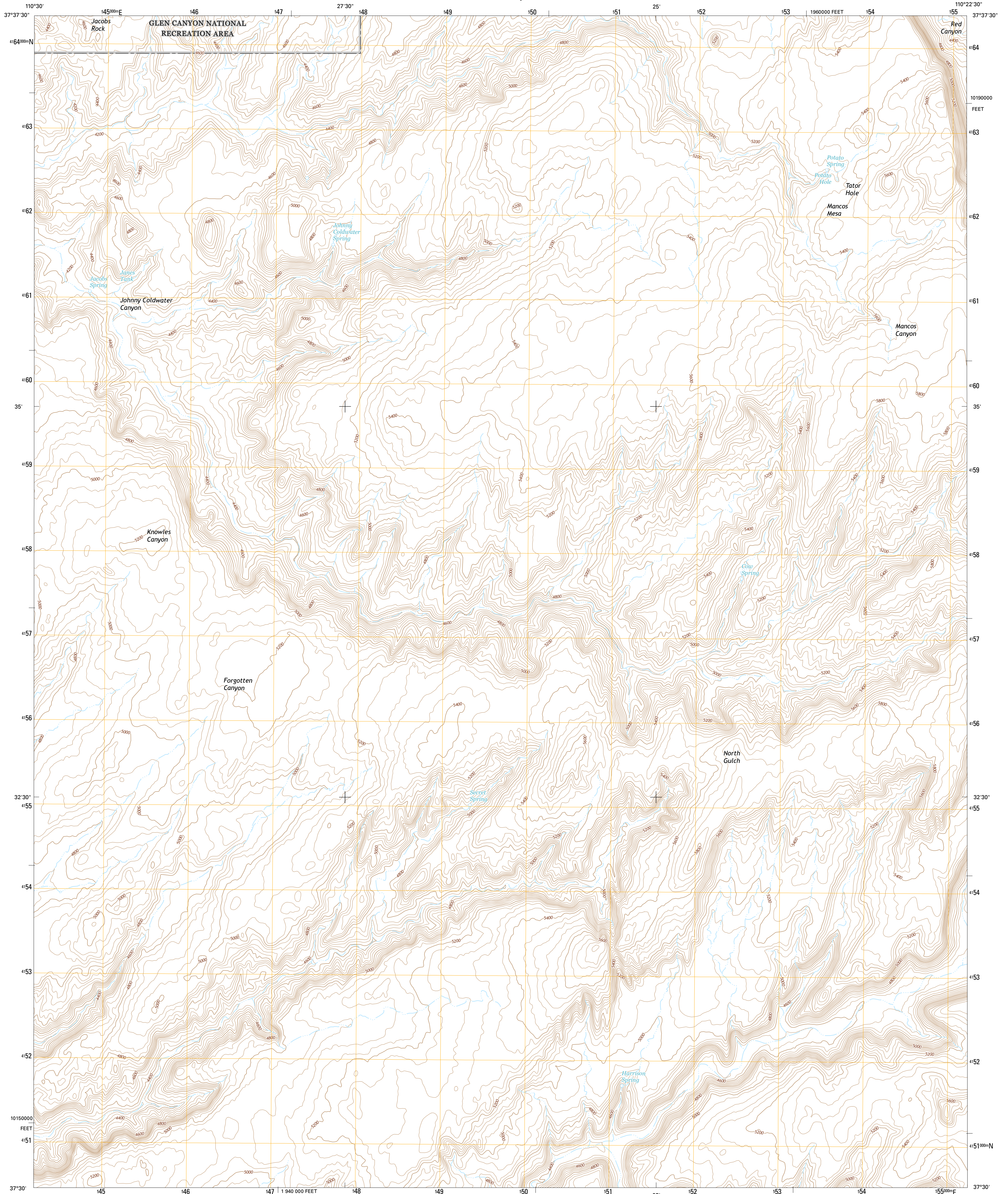




U.S. DEPARTMENT OF THE INTERIOR  
U.S. GEOLOGICAL SURVEY



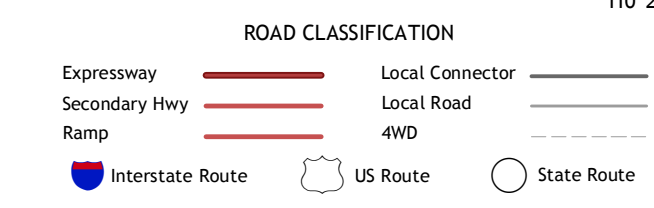
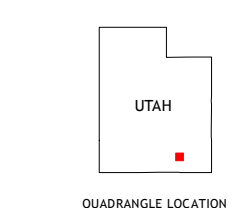
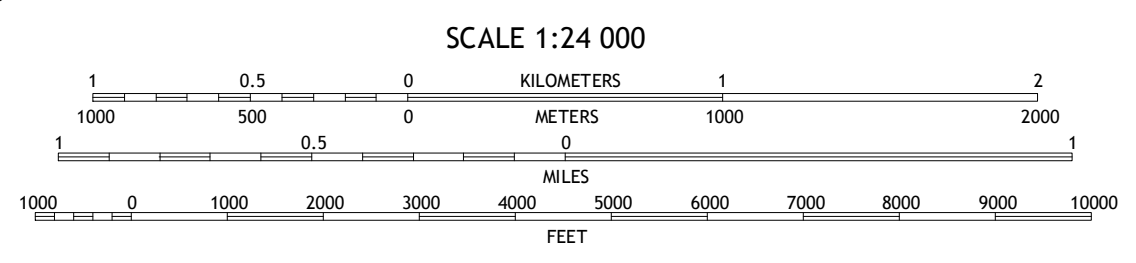
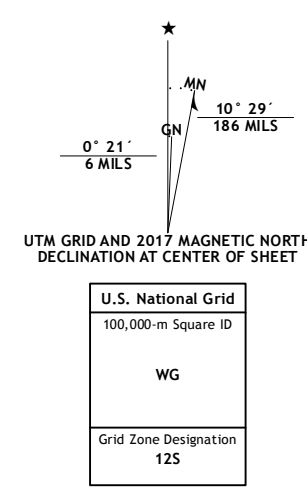
MANCOS MESA QUADRANGLE  
UTAH-SAN JUAN CO.  
7.5-MINUTE SERIES



**Produced by the United States Geological Survey**  
North American Datum of 1983 (NAD83)  
World Geodetic System of 1984 (WGS84), Projection and  
1 000-meter grid: Universal Transverse Mercator, Zone 12S  
10 000-foot ticks: Utah Coordinate System of 1983 (south zone)

This map is not a legal document. Boundaries may be generalized for this map scale. Private lands within government reservations may not be shown. Obtain permission before entering private lands.

Imagery: NIP, October 2014  
Roads: U.S. Census Bureau, 2015 - 2016  
Names: GNIS, 2016  
Hydrography: National Hydrography Dataset, 2014  
Contours: National Elevation Dataset, 1999  
Boundaries: Multiple sources; see metadata file 1972 - 2016  
Public Land Survey System: BLM, 2016  
Wetlands: FWS National Wetlands Inventory 1977 - 2014



1	2	3
4	5	6
7	8	

ADJOINING QUADRANGLES

- Ticaboo Mesa
- Good Hope Bay
- Mancos Mesa NE
- Knowles Canyon
- Chocolate Drop
- Halls Crossing NE
- Burnt Spring
- Clay Hills

MANCOS MESA, UT  
2017

