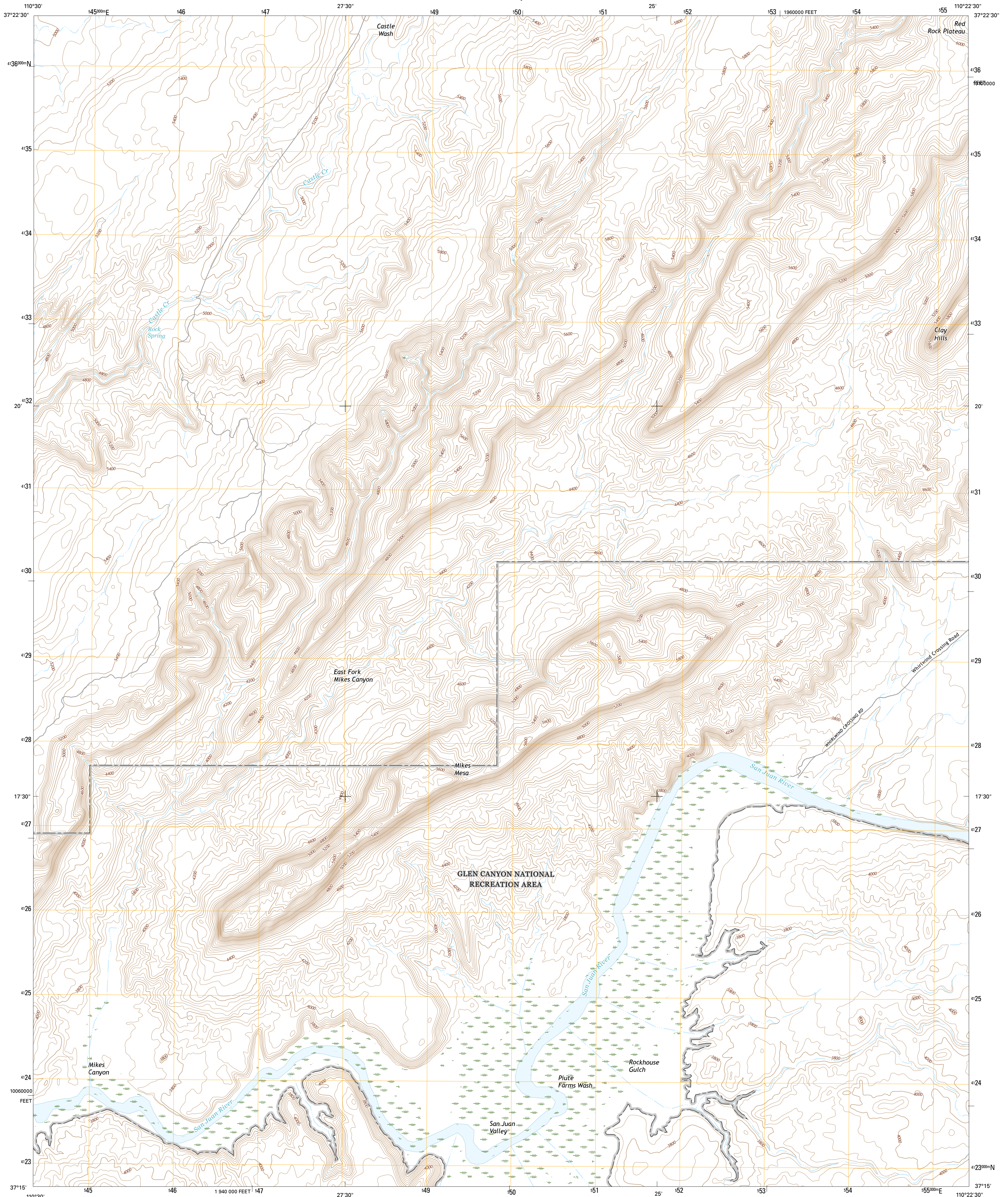




U.S. DEPARTMENT OF THE INTERIOR
U.S. GEOLOGICAL SURVEY



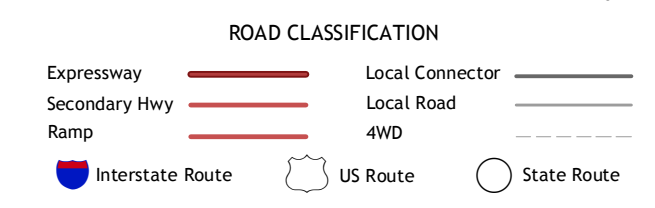
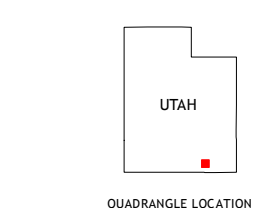
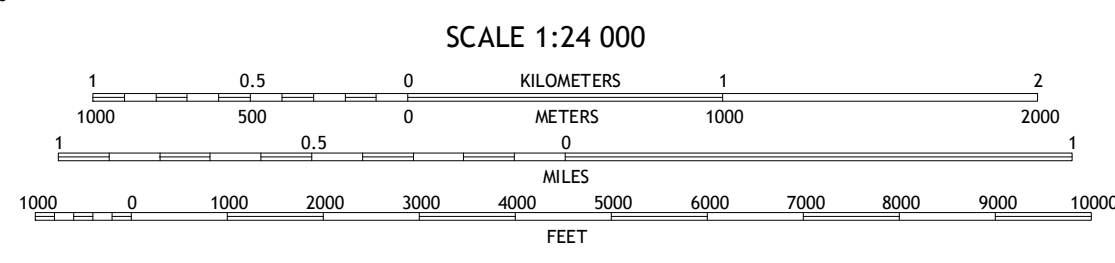
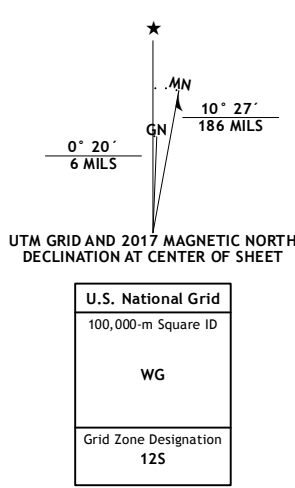
MIKES MESA QUADRANGLE
UTAH-SAN JUAN CO.
7.5-MINUTE SERIES



Produced by the United States Geological Survey
North American Datum of 1983 (NAD83)
World Geodetic System of 1984 (WGS84). Projection and
1 000-meter grid: Universal Transverse Mercator, Zone 12S
10 000-foot ticks: Utah Coordinate System of 1983 (south zone)

This map is not a legal document. Boundaries may be
generalized for this map scale. Private lands within government
reservations may not be shown. Obtain permission before
entering private lands.

Imagery.....NAIP, October 2014
Roads.....U.S. Census Bureau, 2015 - 2016
Names.....National Hydrography Dataset, 2016
Hydrography.....National Hydrography Dataset, 2014
Contours.....National Elevation Dataset, 1999
Boundaries.....Multiple sources; see metadata file 1972 - 2016
Public Land Survey System.....BLM, 2016
Wetlands.....FWS National Wetlands Inventory 1977 - 2014



1	2	3
4	5	6
7	8	

ADJOINING QUADRANGLES

- 1 Halls Crossing NE
- 2 Burnt Spring
- 3 Clay Hills
- 4 Nokai Dome
- 5 Whirlwind Draw
- 6 No Mans Mesa North
- 7 Monitor Butte
- 8 Ojato NE

MIKES MESA, UT
2017

