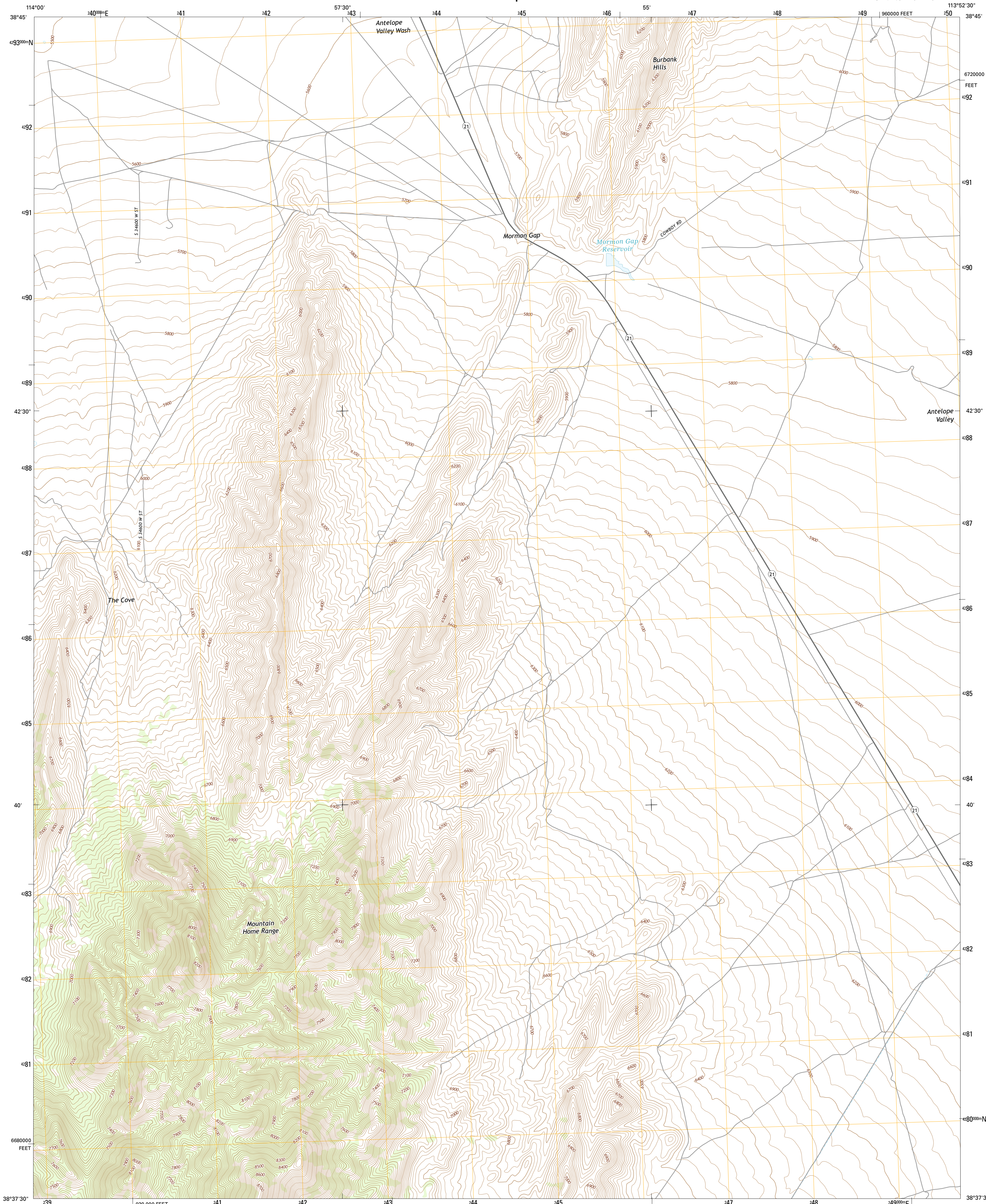




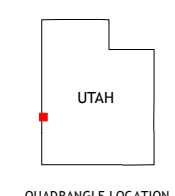
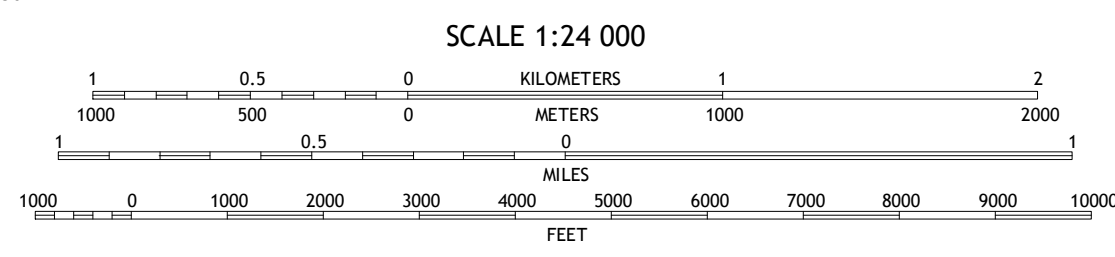
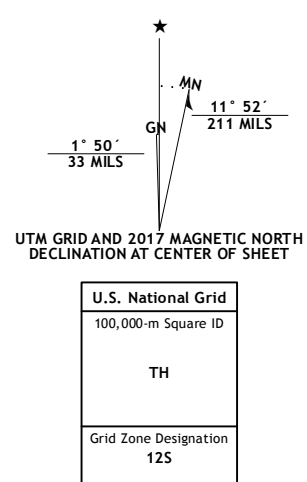
U.S. DEPARTMENT OF THE INTERIOR  
U.S. GEOLOGICAL SURVEY



MORMON GAP QUADRANGLE  
UTAH-MILLARD CO.  
7.5-MINUTE SERIES



**Produced by the United States Geological Survey**  
 North American Datum of 1983 (NAD83)  
 World Geodetic System of 1984 (WGS84). Projection and  
 1 000-meter grid: Universal Transverse Mercator, Zone 12S  
 10 000-foot ticks: Utah Coordinate System of 1983 (central  
 zone)  
 This map is not a legal document. Boundaries may be  
 generalized for this map scale. Private lands within government  
 reservations may not be shown. Obtain permission before  
 entering private lands.  
 Imagery.....N.A.I.P. October 2014  
 Roads.....U.S. Census Bureau, 2015 - 2016  
 Names.....U.S. Census Bureau, 2015 - 2016  
 Hydrography.....National Hydrography Dataset, 2014  
 Contours.....National Elevation Dataset, 2003  
 Boundaries.....Multiple sources; see metadata file 1972 - 2016  
 Public Land Survey System.....BLM, 2016  
 Wetlands.....FWS National Wetlands Inventory 1977 - 2014



**ROAD CLASSIFICATION**

Expressway	Local Connector
Secondary Hwy	Local Road
Ramp	4WD
Interstate Route	US Route
	State Route

1	2	3
4	5	6
7	8	

ADJOINING QUADRANGLES

1 Needle Point Spring  
 2 Cedar Pass  
 3 Big Jensen Pass  
 4 Twedy Wash  
 5 Tunnel Spring  
 6 Miller Wash  
 7 Mountain Home Pass  
 8 Halfway Summit

**MORMON GAP, UT**  
2017

