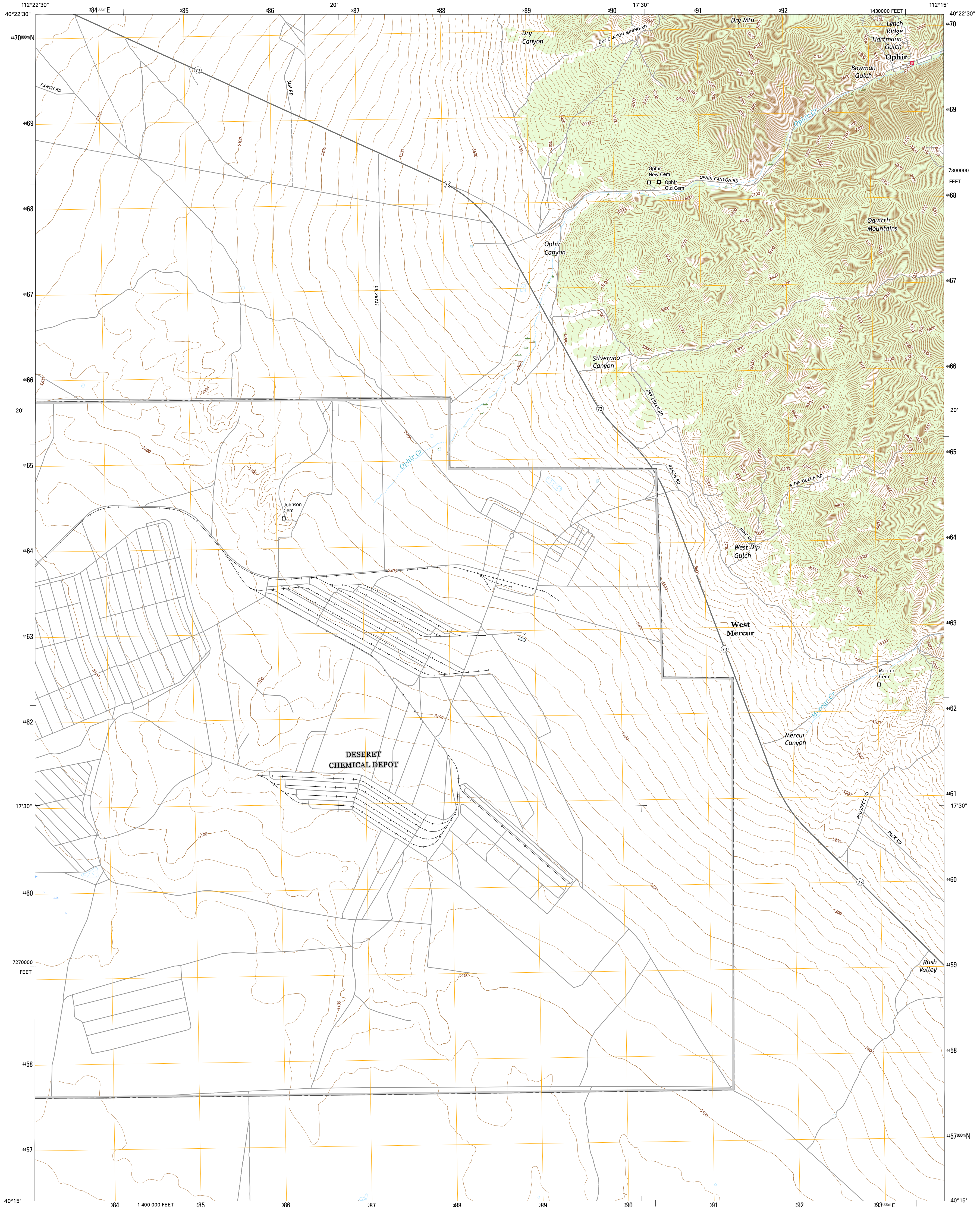




U.S. DEPARTMENT OF THE INTERIOR  
U.S. GEOLOGICAL SURVEY



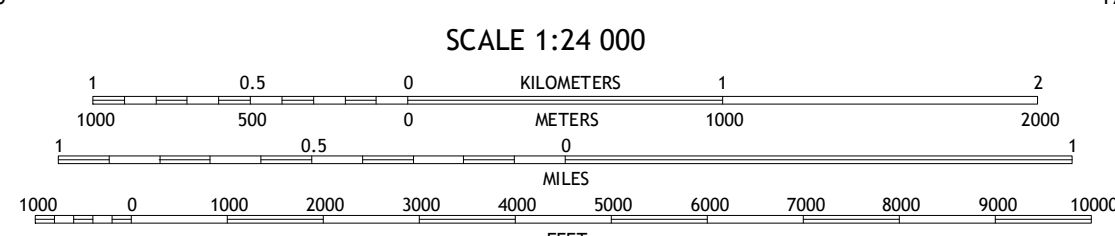
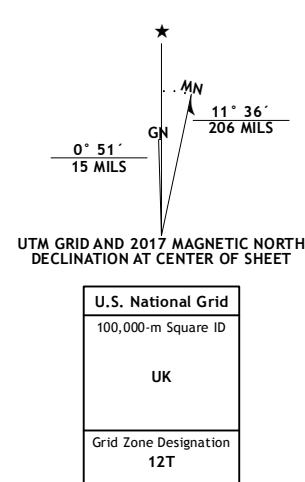
OPHIR QUADRANGLE  
UTAH-TOOLE CO.  
7.5-MINUTE SERIES



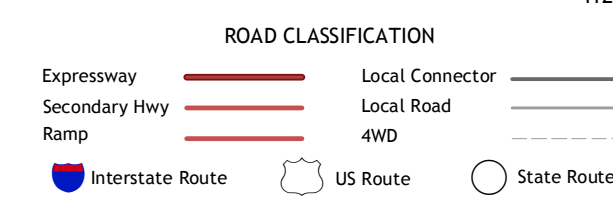
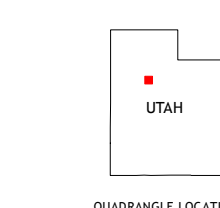
Produced by the United States Geological Survey  
North American Datum of 1983 (NAD83)  
World Geodetic System of 1984 (WGS84), Projection and  
1 000-meter grid: Universal Transverse Mercator, Zone 12T  
10 000-foot ticks: Utah Coordinate System of 1983 (central zone)

This map is not a legal document. Boundaries may be generalized for this map scale. Private lands within government reservations may not be shown. Obtain permission before entering private lands.

Image: NIP, October 2014  
Roads: U.S. Census Bureau, 2015 - 2016  
Names: GNIS, 2016  
Hydrography: National Hydrography Dataset, 2014  
Contours: National Elevation Dataset, 2002  
Boundaries: Multiple sources; see metadata file 1972 - 2016  
Public Land Survey System: BLM, 2016  
Wetlands: FWS National Wetlands Inventory 1977 - 2014



CONTOUR INTERVAL 20 FEET  
NORTH AMERICAN VERTICAL DATUM OF 1988  
This map was produced to conform with the  
National Geospatial Program US Topo Product Standard, 2011.  
A metadata file associated with this product is draft version 0.6.19



1	2	3
4	5	6
7	8	9

ADJOINING QUADRANGLES

OPHIR, UT  
2017

